

# H PARTS LIST

## Truck Suspension Past Generation Products

LIT NO: SP-179

DATE: July 2016

REVISION: E

### CONTENTS

DESCRIPTION	PAGE
■ AR™ 34K .....	2
■ AR 38K .....	4
■ E4™ 34K • 38K .....	6
■ E4 36K • 40K .....	8
■ HA™ 36K • 40K • 46K .....	10
■ HN® / HNT™ 40K • 46K .....	16
■ HN 40K • 46K .....	18
■ SR™ 34K .....	20
■ SR 38K .....	22
■ V4™ 34K .....	24
■ V4 38K .....	26

**SOLUTIONS AT WORK** — Since 1913, Hendrickson's only business has been to serve the needs of the commercial vehicle industry. Today, Hendrickson is a major supplier to every North American heavy-duty truck and trailer OEM, as well as many manufacturers around the world.

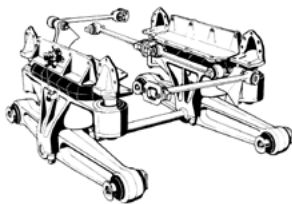
Our goal continues to be providing the most technologically advanced and differentiated products available. We will continue to support past generation products to the best of our ability, although some components may no longer be available. We encourage you to contact our Tech Services staff for questions or to upgrade your suspension.



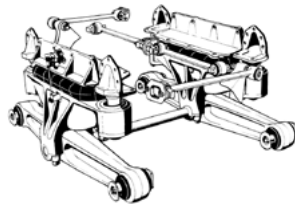
Parts Identification  
truckparts@hendrickson-intl.com



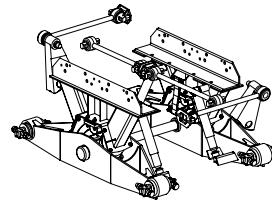
Additional Hendrickson  
Product Information  
www.hendrickson-intl.com



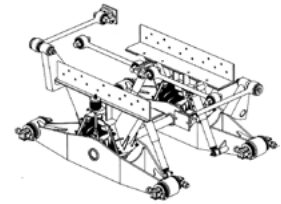
AR 34K



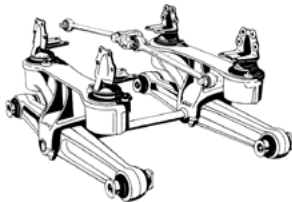
AR 38K



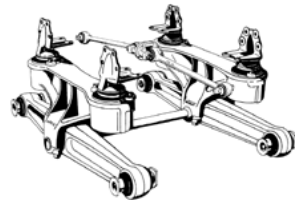
HN 40K • 46K



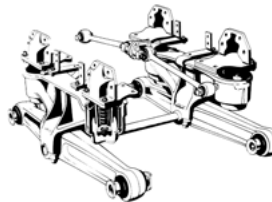
HN /HNT 40K • 46K



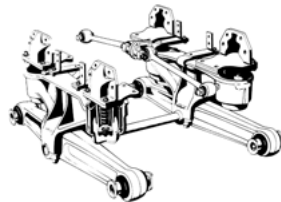
SR 34K



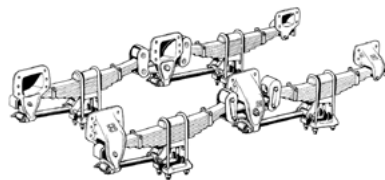
SR 38K



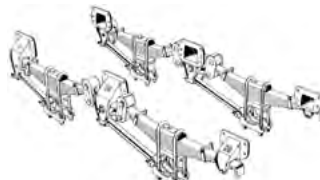
V4 34K



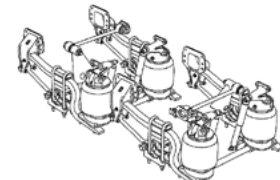
V4 38K



E4 34K • 38K

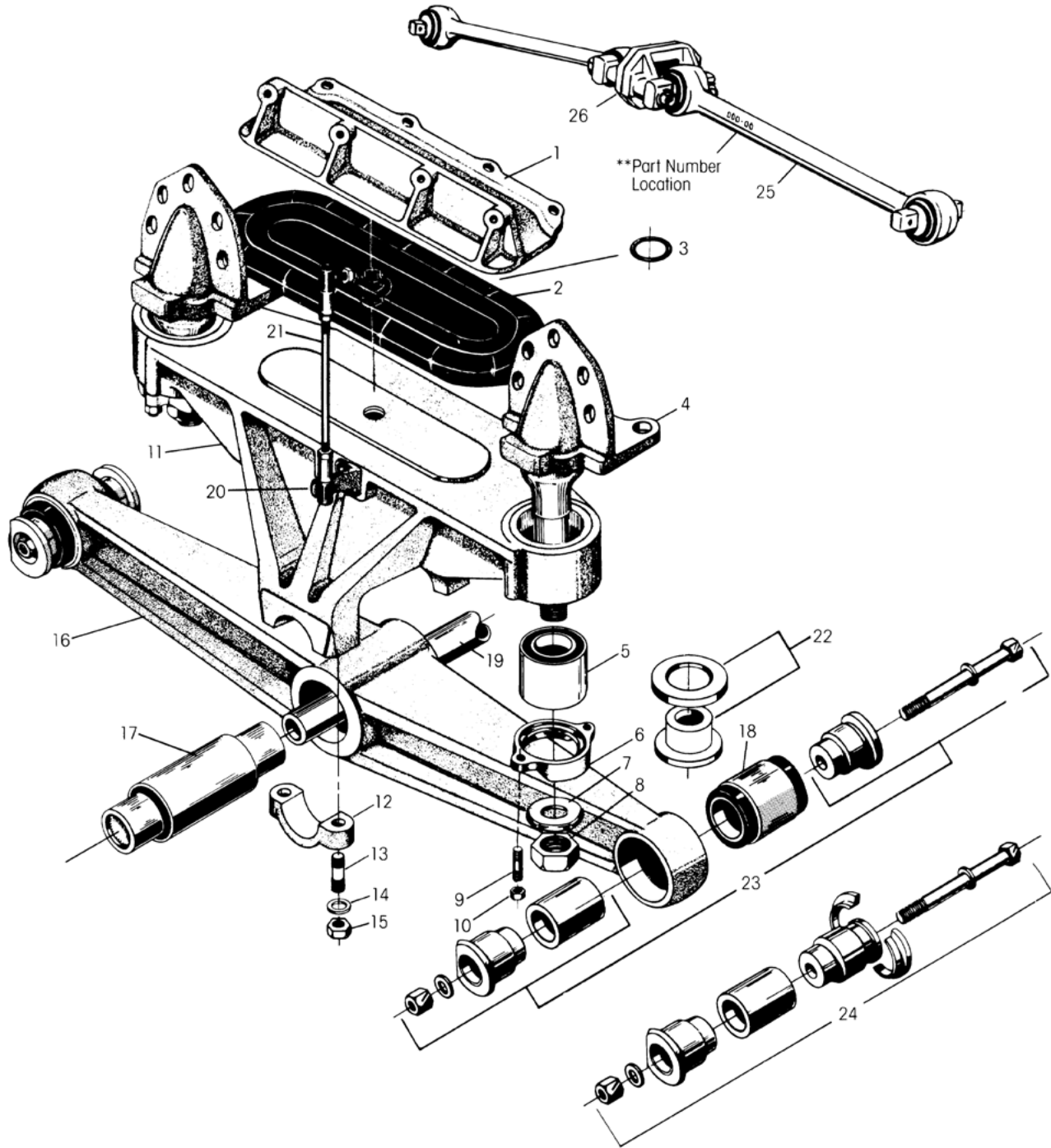


E4 36K • 40K



HA 36K • 40K • 46K

■ Obsolete 1/89





KEY NO.	PART NO.	DESCRIPTION	VEHICLE QTY.	KEY NO.	PART NO.	DESCRIPTION	VEHICLE QTY.
1	10327-001	*Air Spring Frame Hanger	2	18		End Bushing	4
2	13233-001	*Air Spring	2	a	06969-000L	5¼" Length	
3	35475-000	*O-Ring – Air Spring Orifice	2	b	45900-000L	5¾" Length	
4	14059-023	*Frame Hanger, Includes Key Nos. 7-8	4	19	44642-008L	Cross Tube - 44¾" Length	1
5	19279-000L	Vertical Bushing	4	20	22202-000	*Leveling Valve Arm Extension Rod Bracket	2
6	05917-000	Cap	4	21	22110-002	*Leveling Valve Arm Extension Rod	2
7	08536-000	1½" Concave Washer	4	22	31005-002	<b>Optional Rebound Control Stop Kit, Axle Set,</b> Consists of 4 Bumpers & 4 Stop Nuts (Eliminates Nut, Key No. 8)	
8	25151-000	1½"-12 UNF Locknut	4	23		<b>End Bushing Adapter Kit, One Wheel End</b>	
9	19111-001	⅝"-18 UNF Stud	8		45000-013L	Use w/End Bushing Key No. 18a – 5¼" Length	
10	19114-000	⅝"-18 UNF Locknut	8		45000-007L	Use w/End Bushing Key No. 18b – 5¾" Length	
11	11480-003	*Saddle Assembly – 12¼" Height, Includes Key Nos. 5-6, 9-10 & 12-15	2	24		<b>End Bushing Adapter Kit, One Wheel End,</b> w/Split Ring	
12	06662-000	Saddle Cap	4		45000-014L	Use w/End Bushing Key No. 18a – 5¼" Length	
13	09029-000	⅞"-14 UNF/9 UNC Saddle Cap Stud	8		45000-008L	Use w/End Bushing Key No. 18b – 5¾" Length	
14	22962-002	⅞" Hardened Washer	8	25	60218-000	**Torque Rod Assembly <i>Replaces 32271-</i>	2
15	04842-000	⅞"-14 UNF Saddle Cap Locknut	8	26	22186-000	Torque Rod Frame Bracket	2
16		Equalizing Beam Assembly <i>See Selection Guide 45745-147</i>	2		30286-000	*Adhesive Tube, EC-4475-3M (For use at the Bottom Side of the Air Spring Key No. 2)	1
17		***Center Bushing	2				
	06664-000L	w/Welded Plug					
	22279-000L	w/Loose Plug					

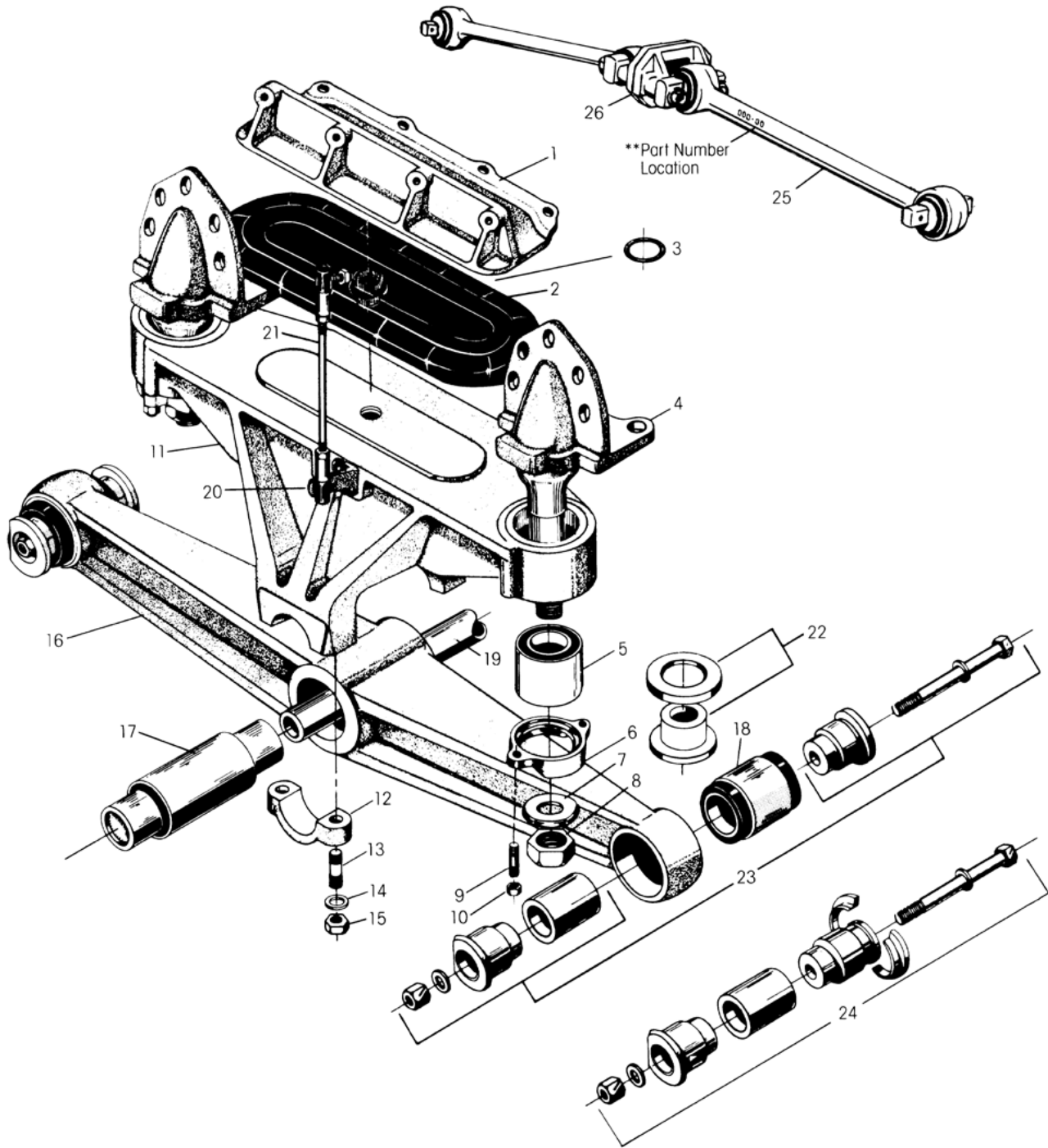
**NOTES:** \* No longer available. Contact Hendrickson to upgrade to a conversion.

\*\* Hendrickson's part number is stamped on the torque rod for identification. Be sure to include the suffix number when ordering, this number indicates torque rod length.

\*\*\* Hendrickson recommends the use of OTC installation tools for center bushing replacement.



■ Obsolete 1/89





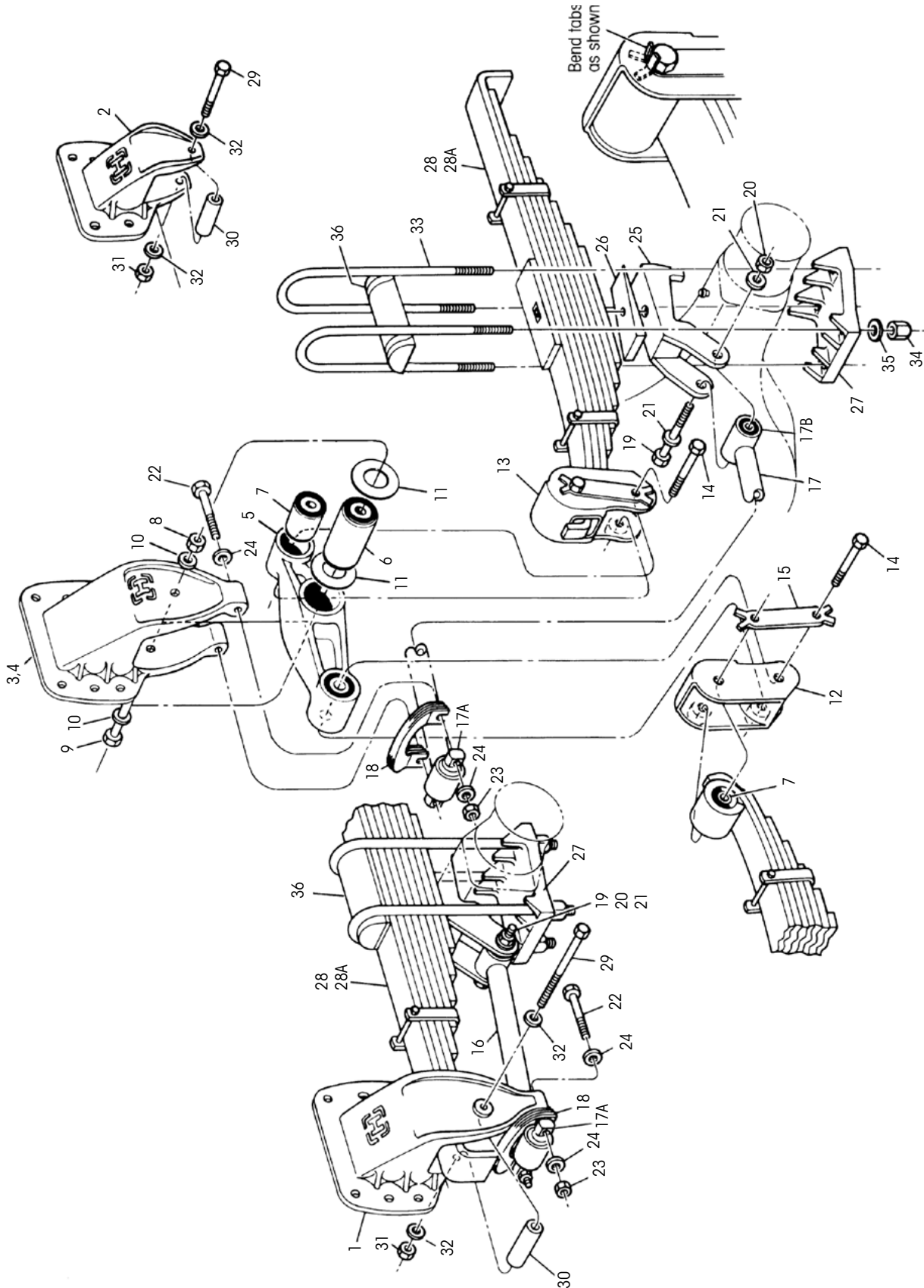
KEY NO.	PART NO.	DESCRIPTION	VEHICLE QTY.	KEY NO.	PART NO.	DESCRIPTION	VEHICLE QTY.
1	10327-001	*Air Spring Frame Hanger	2	18	45900-000L	End Bushing – 5¾" Length	4
2	13233-001	*Air Spring	2	19	44643-009L	Cross Tube – 44⅞" Length	1
3	35475-000	*O-Ring – Air Spring Orifice	2	20	22202-000	*Leveling Valve Arm Extension Rod Bracket	2
4	14059-023	*Frame Hanger, Includes Key Nos. 7-8	4	21	22110-002	*Leveling Valve Arm Extension Rod	2
5	19279-000	Vertical Bushing	4	22	31005-002	<b>Optional Rebound Control Stop Kit, Axle Set,</b> Consists of 4 Bumpers & 4 Stop Nuts (Eliminates Nut, Key No. 8)	
6	05917-000	Cap	4	23	45000-007L	<b>End Bushing Adapter Kit, One Wheel End</b> Use w/End Bushing Key No. 18 – 5¾" Length	
7	08536-000	1½" Concave Washer	4	24	45000-008L	<b>End Bushing Adapter Kit, One Wheel End,</b> w/Split Ring Use w/End Bushing Key No. 18 – 5¾" Length	
8	25151-000	1½"-12 UNF Locknut	4	25	60218-000	**Torque Rod Assembly <i>Replaces 32271-</i>	2
9	19111-001	⅝"-18 UNF Stud	8	26	22186-000	Torque Rod Frame Bracket	2
10	19114-000	⅝"-18 UNF Locknut	8		30286-000	*Adhesive Tube, EC-4475-3M (For use at Bottom Side of Air Spring Key No. 2)	1
11	11480-015	*Saddle Assembly – 12¼" Height, Includes Key Nos. 5-6, 9-10 & 12-15	2				
12	58795-000	Saddle Cap, <i>Replaces 06612-000</i>	4				
13	09030-000	⅞"-14 UNF/9 UNC Saddle Cap Stud	8				
14	22962-002	⅞" Hardened Washer	8				
15	04842-000	⅞"-14 UNF Saddle Cap Locknut	8				
16		Equalizing Beam Assembly <i>See Selection Guide 45745-147</i>	2				
17		***Center Bushing	2				
	05919-000L	w/Welded Plug					
	22282-000L	w/Loose Plug	2				

**NOTES:** \* No longer available. Contact Hendrickson to upgrade to a conversion.

\*\* Hendrickson's part number is stamped on the torque rod for identification. Be sure to include the suffix number when ordering, this number indicates torque rod length.

\*\*\* Hendrickson recommends the use of OTC installation tools for center bushing replacement.

■ Obsolete 1/89



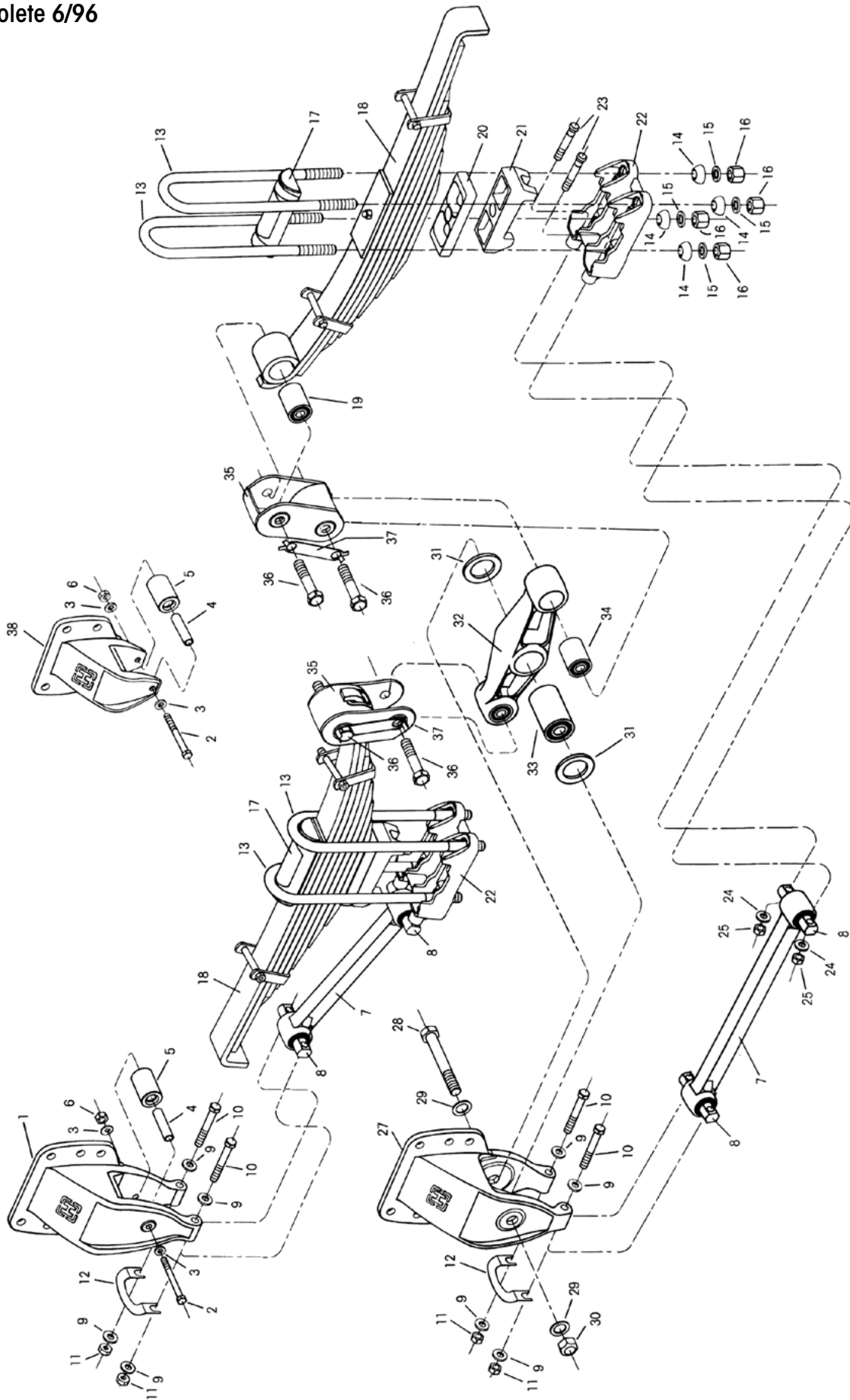


KEY NO.	PART NO.	DESCRIPTION	VEHICLE QTY.	KEY NO.	PART NO.	DESCRIPTION	VEHICLE QTY.
1	47432-002	*Front Spring Hanger (Casting No. 47431-000)	2	23	30585-000	5/8"-11 UNC Torque Rod Mounting Nut (Hanger)	8
2	48530-004	*Rear Spring Hanger for frame widths of 33.94" (Casting No. 48991-000) <i>Replaces 47436-003</i>	2	24	22962-004	5/8" Torque Rod Mounting Washer (Hanger)	16
3	47445-001	*Center Spring Hanger and Equalizing Beam Assembly for frame widths of 33.94", Includes Key Nos. 3-4, 7-10	2	25		*Spring Seat	4
4	56833-004	*Center Spring Hanger for frame widths of 33.94" (Casting No. 47433-000) <i>Replaces 47434-002</i>	2	47973-000	47974-000	Casting No. 47961-000, <i>Replaces 47716-000</i> Casting No. 47962-000, <i>Replaces 47718-000</i>	
5	47444-001	*Equalizing Beam Assembly, Includes Key Nos. 6-7 (Casting No. 47437-000)	2	26		*Wedge	As Req.
6	47420-000	Center Bushing	2	47731-000		No Tab	
7	47421-000	End Bushing & Spring Eye Bushing	8	48053-000		2 Tab	
8	08017-000	1" Center Bushing Locknut	2	48054-000		3 Tab	
9	30550-035	1" Center Bushing Bolt, <i>Replaces 30550-033</i>	2	48055-000		4 Tab	
10	22962-006	1" Hardened Flat Washer	4	27		*Bottom Cap	4
11	47416-000	Thrust Washer	4	48252-000	48254-000	<i>Replaces 47450-005 &amp; 47965-000</i> <i>Replaces 47454-000 &amp; 47966-000</i> <i>48255-000, 47451-000 &amp; 47963-000</i> <i>48096-000, 47452-000 &amp; 47964-000</i> <i>47453-000</i>	
12	47440-000	*LHF/RHR Shackle Bracket (Casting No. 47439-000)	2	28		Spring	4
13	47442-000	*RHF/LHR Shackle Bracket (Casting No. 47441-000)	2	50863-000	50865-000	34K Capacity, <i>Replaces 47474-000</i> 38K Capacity, <i>Replaces 47475-000</i>	
14	48728-000	7/8"-9 UNC Shackle Bolt	8	29	24531-014	1/2"-13 UNC x 5" Rebound Bolt	4
15	47459-000	Shackle Bolt Retainer	4	30	57988-000	Rebound Bolt Spacer, <i>Replaces 47458-000</i>	4
16	48158-001	Front Torque Rod - Shim Type Adjustable <i>Replaces 47401-001</i>	2	31	49846-000	1/2"-13 UNC Rebound Bolt Nut, <i>Replaces 46578-000</i>	4
17	48158-002	*Rear Torque Rod - Shim Type Adjustable <i>Replaces 47401-002</i>	2	32	22962-014	1/2" Rebound Bolt Washer	8
a	47691-000L	Torque Rod Bushing - Bar Pin Type	4	33		7/8" U-bolt	8
b	47692-000L	Torque Rod Bushing - Thru-Bolt Type	4	47417-001	47417-003	1 6/4" 1 7/2"	
18	49689-000L	Shim, <i>Replaces 47457-000</i>	As Req.	34	50765-000	7/8"-14 UNF U-Bolt Locknut, <i>Replaces 23899-000</i>	16
19	30418-009	7/8"-14 UNF Torque Rod Mounting Bolt (Axle)	4	35	22962-002	7/8" Hardened Washer	16
20	29248-000	7/8"-14 UNF Torque Rod Mounting Locknut (Axle)	4	36	48797-000	Top Pad, <i>Replaces 47446-000</i>	4
21	22962-002L	7/8" Torque Rod Mounting Washer (Axle)	8	37	48158-002	*Threaded Turnbuckle Type Adjustable Torque Rod Rear - Optional, <i>Replaces 47778-002</i>	
22	32043-005	5/8"-11 UNC Torque Rod Mounting Bolt (Hanger) <i>Replaces 30587-017</i>	8				

**NOTE:** \* No longer available. Contact Hendrickson to upgrade to a conversion.



■ Obsolete 6/96





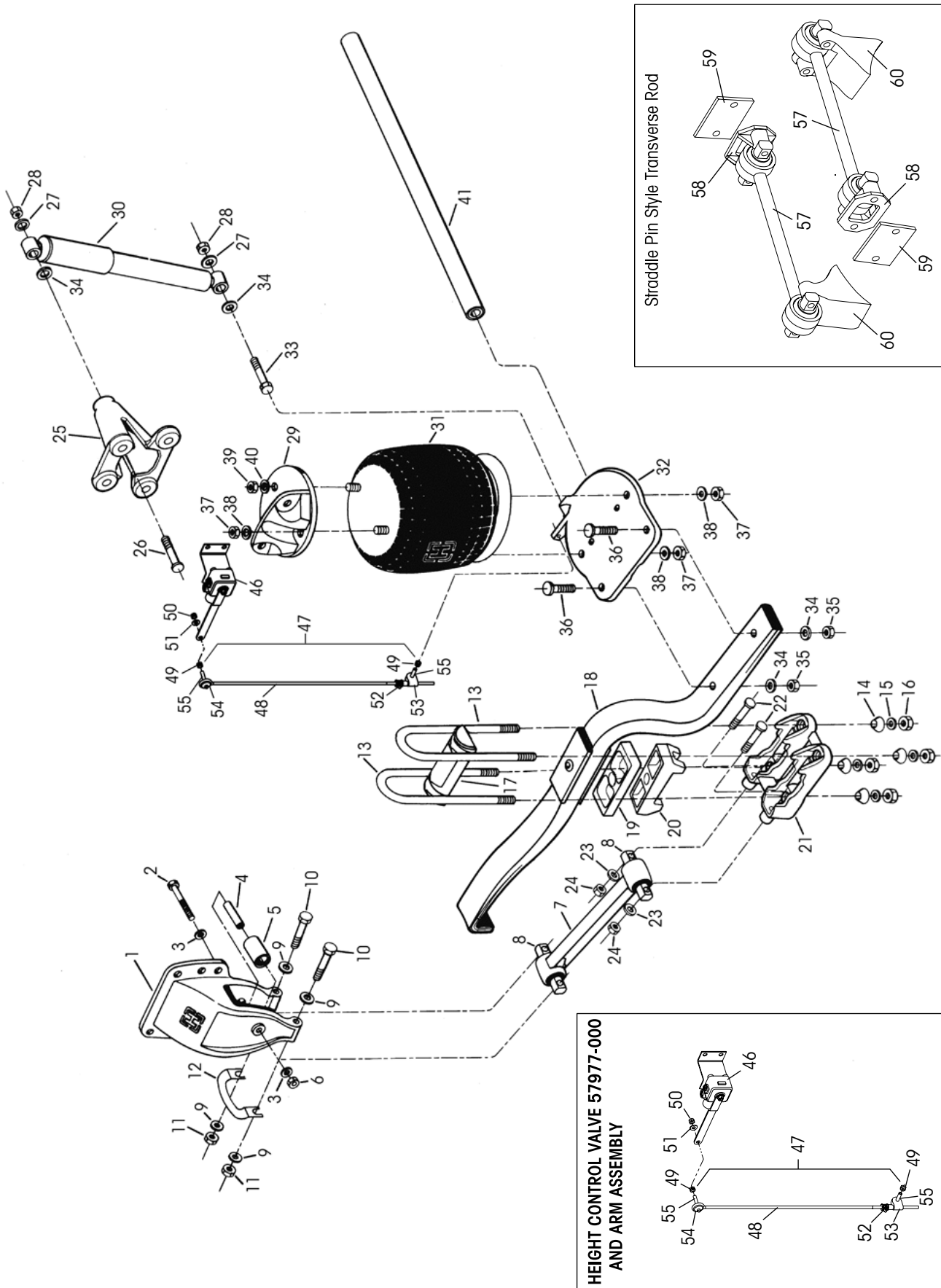


KEY NO.	PART NO.	DESCRIPTION	VEHICLE QTY.	KEY NO.	PART NO.	DESCRIPTION	VEHICLE QTY.
1		Front Spring Hanger	2			Rear Spring Seat	2
	56830-002	Casting No. 56829-001 <i>Replaces 48533-002 for International</i>			56501-007	*Casting No. 49157 or 56500 5° Pinion Angle <i>Replaces 49158-000</i>	
	56830-003	Casting No. 56829-001 <i>Replaces 48533-003 for Kenworth</i>			49124-000	*Casting No. 49143, 6.5° Pinion Angle	
	56886-002	Casting No. 56885-00X <i>Replaces 48533-006 for Mack</i>			49125-000	*Casting No. 48656, 9.5° Pinion Angle	
	56830-012	Casting No. 56829-001 (Manning Ford) *56673-001 Casting No. 56672-001, 49047-000, 49050-001, 47431-000, 47432-001, 49723-000, 49726-001 *Casting No. 48442-, 48533-004, 48533-001, 48533-002, 48533-003, 48533-005, 48533-006			56513-006	*Casting No. 48658, 10.5° Pinion Angle <i>Replaces 49126-000</i>	
	49175-013	<b>Rebound Roller Kit, Axle Set</b> , Includes Key Nos. 2-6, <i>Replaces 49175-005</i>			56505-009	*Casting No. 48643 or 56504 12° Pinion Angle <i>Replaces 49127-000</i>	
2	24531-015	½"-13 UNC x 5½" Rebound Bolt	4	22		Axle Bottom Cap, Includes Key Nos. 23-25 (Rockwell SL, SQ-100, RT 34-145, RT 40-145, Eaton D341, D402 0-9° Pinion Angle	
3	22962-014	½" Hardened Flat Washer	8		49064-000	LHF (Casting No. 48810-000)	1
4	57988-000	Rebound Bolt Spacer, <i>Replaces 47458-000</i>	4		49134-000	*RHF (Casting No. 48811-000)	1
5	57989-000	Rebound Roller, <i>Replaces 48883-000</i>	4		49135-000	*LHR (Casting No. 48812-000)	1
6	49846-000	½"-13 UNC Rebound Bolt Nut	4		49064-000	RHR (Casting No. 48810-000)	1
7		Torque Rod Assembly - Shim Type Adjustable			56857-000	LHR (Casting No. 56855-000) <i>Replaces 49138-000</i>	1
	48411-001	15.83" Front	2		56854-000	RHR (Casting No. 56852-000) <i>Replaces 49139-000</i>	1
	48411-002	*21.93" Rear	2	23	49063-000	⅝"-11 UNC x 3/8" Axle Cap Bolt	8
8	47691-000L	Torque Rod Bushing	8	24	22962-004	⅝" Hardened Flat Washer	8
	49176-001L	<b>Torque Rod Fastener Kit, Axle Set</b> , Includes Key Nos. 9-11		25	47764-000	⅝"-11 UNC Axle Cap Nut	8
9	22962-004	⅝" Hardened Flat Washer	16	26		Center Spring Hanger & Equalizing Beam Assembly, Includes Key Nos. 27-32 *E4 36K • E4 40K, <i>Replaces 47445-007</i> *(Specify Customer)	2
10	32043-005	⅝"-11 UNC Torque Rod Bolt	8		47445-001		
11	47764-000	⅝"-11 UNC Torque Rod Nut	8	27	47445-XXX		
12	49689-000L	Torque Rod Shim	As Req.		56833-003	Center Spring Hanger *Casting No. 47433-000, 50642-000 or 56832-000, <i>Replaces 47434-002</i> (Casting No. 56926)	2
	48718-XXX	*U-bolt Assembly, Includes Key Nos. 13-16			49839-XXX	*Casting No. 48428-000, 50640-000 or 56926-000 (Specify Customer)	
13	47417-XXX	*U-bolt, Specify Length	8	28	30550-035	1" Center Bushing Bolt	2
14	48574-000	Spherical Washer	16	29	22962-006	1" Hardened Flat Washer	4
15	22962-002	⅞" Hardened Flat Washer	16	30	08017-000	1" Center Bushing Locknut	2
16	50765-000	⅞"-14 UNF U-Bolt Locknut, <i>Replaces 23899-000</i>	16	31	47416-000	Thrust Washer	4
17		Top Pad	4	32		Equalizing Beam Assembly, Includes Key Nos. 33-34 (Casting No. 47437-000) *E4 36K • E4 40K, <i>Replaces 47444-004</i>	2
	48797-000	Separate From Spring			47444-001		
	50788-000	Part of Spring		33	47420-000	Center Bushing, <i>Replaces 48402-000</i>	2
18		E4 Spring Assembly	4	34	47421-000	End Bushing, <i>Replaces 48401-000</i>	4
	50863-000	E4 36K, <i>Replaces 47474-000</i>		35		Shackle Bracket	
	50863-000	E4 36K, w/Top Pad			47440-000	*LHF/RHR (Casting No. 47439)	2
	50865-000	E4 40K, <i>Replaces 48400-000</i>			47442-000	*RHF/LHR (Casting No. 47441)	2
	50865-000	E4 40K, w/Top Pad		36	48728-000	⅞"-9 UNC Shackle Bolt	8
19	47421-000	Spring Eye Bushing	4	37	47459-000	Shackle Bolt Retainer	4
20		Spacer		38		Rear Spring Hanger or Casting No. 48529-000 *Casting No. 48991, <i>Replaces 47436-003</i> *Casting No. 48529 (Specify Customer)	2
	48902-000	1"			48530-004		
	48903-000	1½"			48530-XXX		
21		Front Spring Seat	2				
	56509-001	*Casting No. 48657, 2.25° Pinion Angle <i>Replaces 49121-000</i>					
	50518-000	*Casting No. 48692 or 49122 3.25° Pinion Angle					
	49123-000	Casting No. 48630, 4° Pinion Angle					
	56501-007	*Casting No. 49157, 5° Pinion Angle <i>Replaces 49158-000 or Casting 56500-000</i>					

NOTE: \* No longer available. Contact Hendrickson to upgrade to a conversion.



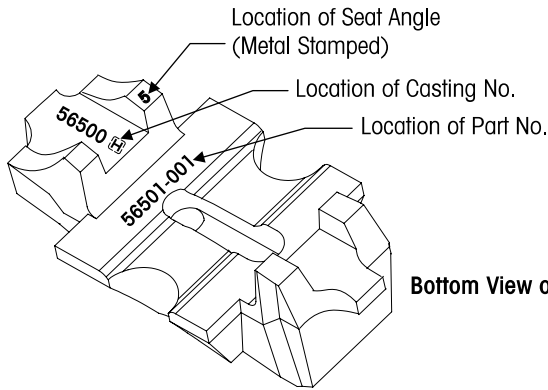
■ Obsolete 8/95





KEY NO.	PART NO.	DESCRIPTION	VEHICLE QTY.	KEY NO.	PART NO.	DESCRIPTION	VEHICLE QTY.
1	56673-001	Front Spring Hanger Casting No. 56672-001 <i>Replaces Casting No. 49723-000</i> <i>Replaces Part No. 49726-001, 49047-000</i>	4	30	60670-003L	Shock Absorber <i>All Others, Replaces 47902-008</i>	4
	56830-	Casting No. 56829-001 (Specify Customer) <i>Replaces Casting No. 48442-000</i> <i>Replaces Part No. 48533-000</i>			60670-001L	Mack, <i>Replaces 47902-009</i>	
	49175-013	<b>Rebound Roller Kit, Axle Set,</b> Includes Key Nos. 2-6			60670-003L	Ford, <i>Replaces 47902-013</i>	
2	24531-015	½"-13 UNC x 5½" Rebound Bolt	4	31	49048-002L	Air Spring <i>All Others, Replaces 49207-000 and 49048-000</i>	4
3	22962-014	½" Hardened Flat Washer	8		49674-002	Mack	
4	57988-000	Rebound Bolt Spacer	4		50405-002L	Ford, <i>Replaces 50405-001</i>	
5	57989-000	Rebound Roller	4	32		Air Spring Bracket Assembly, Includes Key Nos. 33-36	
6	49846-000	½"-13 UNC Rebound Bolt Nut	4		48908-001	LH (Casting No. 48836-001)	2
7		Torque Rod Assembly - Shim Type Adjustable HA 36K • 40K	4		48908-002	RH (Casting No. 48836-002)	2
	48411-001	15.83"		33	50368-000	Shock Bolt, <i>Replaces 48752-000</i>	4
	48411-003	16.5"		34	22962-001	¾" Hardened Flat Washer	16
	62009-400	15.75", <i>Replaces 50376-002, 32271-098</i>		35	49842-000	¾"-10 UNC Main Support Member Nut <i>Replaces 49140-000</i>	8
	62005-420	16.54", <i>Replaces 50376-003, 32271-099</i>		36	50369-000	¾"-10 UNC Main Support Member Bolt <i>Replaces 48829-000</i>	8
8		Torque Rod Bushing HA 36K • 40K - 62009 and 62005 Series	8		49177-001	<b>Air Spring Fastener Kit, Axle Set,</b> Includes Key Nos. 37-40	
	44695-000L	HA 46K - 32271 Series		37	17700-010	½" Nut	12
	57256-000L	HA 46K - 50376 Series		38	22962-014	½" Hardened Flat Washer	12
	49176-001L	<b>Torque Rod Fastener Kit, Axle Set,</b> Includes Key Nos. 9-11		39	17700-031	¾" Nut	4
9	22962-004	⅝" Hardened Flat Washer	16	40	22962-001	¾" Hardened Flat Washer	4
10	32043-005	⅝"-11 UNC Torque Rod Bolt	8	41	44642-022	Cross Tube	2
11	47764-000	⅝"-11 UNC Torque Rod Nut	8		48689-001	<b>Quick Release Kit,</b> Includes Key Nos. 42-44	
12	49689-000L	Torque Rod Shim	As Req.	42	48914-000	*Air Dump Switch (Located In Cab)	1
	48718-	U-bolt Assembly, Includes Key Nos. 13-16		43		*Synchro-Relay Valve (Replaced by Dump Valve in New Height Control Valve Part No. 49193-001)	1
13	47417-	U-bolt, Specify Length	8	44	48940-000	*Air Switch Name Plate, (Located In Cab)	1
14	48574-000	Spherical Washer	16	45	30272-000	*Pressure Protection Valve	1
15	22962-002	⅞" Hardened Flat Washer	16	46	57977-000	Height Control Valve <i>Replaces 50433-001/002, 49193-001</i>	1
16	50765-000	⅞"-14 UNF U-Bolt Locknut <i>Replaces 23899-000</i>	16	47	58994-OXX	Height Control Valve and Linkage Assembly, Includes Key Nos. 48-55 <i>Replaces 58404- 22110-</i>	1
17	49337-000	Top Pad, <i>Replaces 48797-000</i>	4	48		Extension Rod, Specify Length <i>Replaces 58400- 22107-</i>	1
18		Main Support Member	4	49		⅝"-18 UNC Jam Nut, <i>Replaces 17491-019</i>	2
	48112-001	HA 36K (1⅝")		50		⅝"-18 UNC Locknut, <i>Replaces 48948-000</i>	2
	56871-001	HA 40K (1⅝") <i>Replaces 48874-001</i>		51		⅝" Hardened Washer	2
	48645-001	HA 46K (2⅝") <i>Replaces 48645-000</i>		52		Valve Arm Clamp	1
19		Spacer	As Req.	53		Adj. Valve Arm Joint	1
	48902-000	1"		54		Rubber Grommet	1
	48903-000	1½"		55		Valve Arm Joint <i>Replaces 58401, 58402, 30727-000</i>	2
20		Spring Seat, <i>See Table on Page 12</i>		56		*Air Dump Switch for Height Control Valve furnished by O.E.M.	
21		Axle Bottom Cap, <i>See Table on Page 13</i> Includes Key Nos. 22-24	1	57		Transverse Torque Rod Assembly	2
22	49063-000	⅝"-11 UNC x 3⅞" Axle Cap Bolt	8		60218-000	HA 36K • 40K, <i>Replaces 52271-000</i>	
23	22962-004	⅝" Hardened Flat Washer	8		60215-000	HA 46K, <i>Replaces 50234-000a</i>	
24	47764-000	⅝"-11 UNC Axle Cap Nut	8	58	22186-000	Torque Rod Frame Bracket	2
25	48924-000	Shock Frame Hanger, Includes Key Nos. 26-28 (Casting No. 48906-000)	4	59	45045-003	Back Up Plate	2
26	50368-000	½"-13 UNC Shock Bolt, <i>Replaces 48752-000</i>	4	60		Torque Rod Axle Bracket	2
27	22962-031	½" Hardened Flat Washer	8				
28	49846-000	½"-13 UNC Shock Nut, <i>Replaces 49140-000</i>	8				
29	50804-002	Air Spring Frame Hanger, (Casting No. 57455-000), <i>Replaces Casting</i> <i>No. 48152-000, Part No. 57456-000,</i> <i>48159-000, 50804-001</i>	4				

NOTE: \* See Plumbing Diagram on Page 13.



Bottom View of Spring Seat

**HA 36K • 40K SPRING SEAT ASSEMBLY**

**NOTE:** All HA 46K spring seat assemblies are no longer available. Contact Hendrickson to convert to upgrade to a conversion.

KEY NO. 20		Four (4) required per tandem suspension			
FRONT	LEFT			RIGHT	
	Eaton D341, D402, D404, D405 Rockwell RT40-145, SQ100			Eaton D404, D405 Rockwell RT40-145	Eaton D461, D402 Rockwell SQ100
CASTING NO.	56500-000		56500-000	*56502-000	
SEAT ANGLE	PART NO.	NO.REQ.	PART NO.	PART NO.	NO.REQ.
2°	56501-001	1	56501-001	*56503-001	1
2½°	56501-002	1	56501-002	*56503-002	1
3°	56501-003	1	56501-003	*56503-003	1
3½°	56501-004	1	56501-004	*56503-004	1
4°	56501-005	1	56501-005	*56503-005	1
4½°	56501-006	1	56501-006	*56503-006	1
5°	56501-007	1	56501-007	*56503-007	1
5½°	56501-008	1	56501-008	*56503-008	1
6°	56501-009	1	56501-009	*56503-009	1
6½°	56501-010	1	56501-010	*56503-010	1
7°	56501-011	1	56501-011	*56503-011	1
REAR	LEFT			RIGHT	
	Eaton D404, D405 Rockwell RT40-145	Eaton D341, 402 Rockwell SQ100		Eaton D341, D402 D404, D405 Rockwell RT40-145, SQ100	
CASTING NO.	56504-000	*56506-000		56500-000	
SEAT ANGLE	PART NO.	PART NO.	NO.REQ.	PART NO.	NO.REQ.
5°	56505-011	*56507-011	1	56501-011	1
6½°	56505-012	*56507-012	1	*56501-012	1
7½°	56505-018	*56507-016	1	56501-018	1
8°	56505-001	*56507-001	1	56501-001	1
8½°	56505-002	*56507-002	1	56501-002	1
9°	56505-003	*56507-003	1	56501-003	1
9½°	56505-004	*56507-004	1	56501-004	1
10°	56505-005	*56507-005	1	56501-005	1
10½°	56505-006	*56507-006	1	56501-006	1
11°	56505-007	*56507-007	1	56501-007	1
11½°	56505-008	*56507-008	1	56501-008	1
12°	56505-009	*56507-009	1	56501-009	1
12½°	56505-010	*56507-010	1	56501-010	1
13½°	56505-015		1	56501-015	1

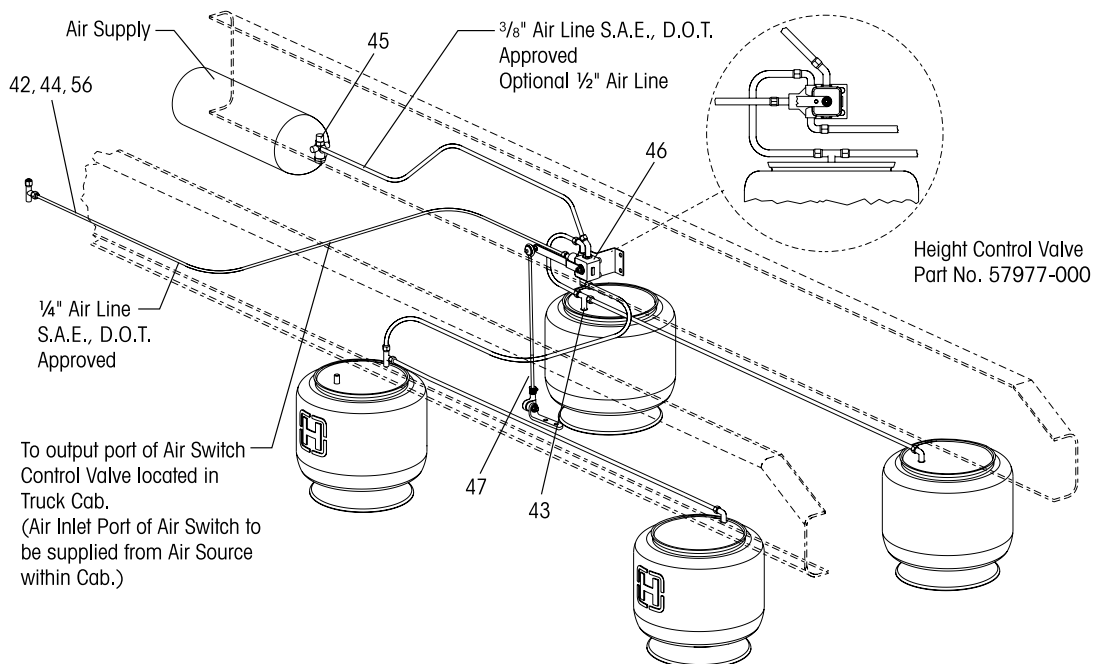
\* No longer available.



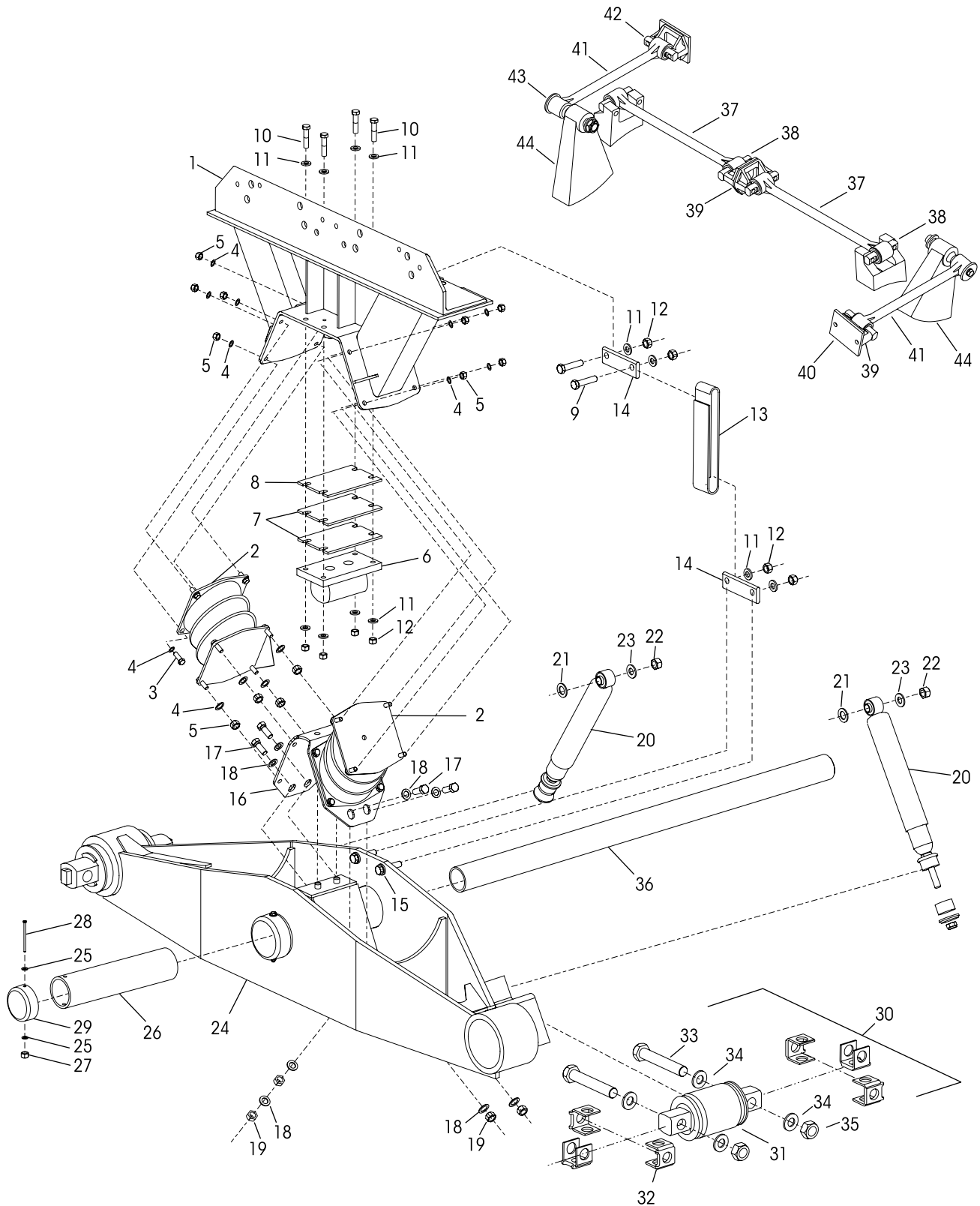
KEY NO. 21		HA 36K • 40K • 46K AXLE BOTTOM CAP					
FRONT	LEFT			RIGHT			
		Rockwell SL, SQ-100, RT 34-145, RT 40-145, RT 46-160, SSHD Eaton D341, D402, D461	Rockwell SL, SQ-100, RT 34-145, RT 40-145 Eaton D341, D402	Rockwell SL, SQ-100, RT 34-145, RT 40-145 Eaton D341, D402	Eaton D461	Rockwell SL, SQ-100, RT 34-145, RT 40-145, SSHD Eaton D341, D402	Rockwell SL, SQ-100, RT 34-145, RT 40-145 Eaton D341, D402
CASTING NO.	48810-000	48812-000	56855-000	48810-000	48811-000	56852-000	
PINION ANGLE	⊞ PART NO.	⊞ PART NO.	⊞ PART NO.	⊞ PART NO.	⊞ PART NO.	⊞ PART NO.	
0-5°	48390-000			48391-000			
0-9°	49064-000	*49135-000			*49134-000		
0-9½°	49064-000				*49659-000		
9½-13°			56857-000			56854-000	
REAR	LEFT			RIGHT			
	Rockwell RT 46-160 Eaton D461	Rockwell SSHHD Eaton D461	Eaton D461	Rockwell SSHHD Eaton D461	Rockwell SL, SQ-100, RT 34-145, RT 40-145, RT 46-160, SSHD Eaton D341, D402, D461	Rockwell RT 46-160, SSHHD Eaton D461	
CASTING NO.	48810-000	48812-000	56852-000	56855-000	48810-000	56852-000	
PINION ANGLE	PART NO.	PART NO.	PART NO.	PART NO.	PART NO.	PART NO.	
0-5°	50367-000				48390-000		
0-9°					49064-000		
0-9½°		*49660-000			49064-000		
6½-12°			56944-000			57219-000	
10-12°				56945-000		56854-000	

\* No longer available.

### HA 36K • 40K • 46K PLUMBING DIAGRAM



■ Vehicles built BETWEEN 03/96 and 09/97





KEY NO.	PART NO.	DESCRIPTION	VEHICLE QTY.	KEY NO.	PART NO.	DESCRIPTION	VEHICLE QTY.
1	58223-0XX	*Saddle Assembly, See Figure 1 below Includes Key Nos. 2-12, 14, 16,	2	25	22962-028	¼" Washer	4
2	60879-000L	<b>Bolster Spring Kit, One Set (2 pc)</b>	2	26	49972-000	Nylon Bushing	2
3	25114-011	¾"-20 UNF x 1¼" Bolt	32	27	49983-000	¼"-20 UNC Locknut	2
4	22962-027	¾" Hardened Washer	64	28	50698-000	¼"-20 UNC x 4½" Bolt	2
5	48949-000	¾"-20 UNF Locknut	32	29	56910-000	Center End Cap	2
6	57962-000	Auxiliary Spring Assembly	2	30		<b>Bar Pin End Bushing Service Kit, One Wheel End,</b> Includes Key Nos. 31-35	
7	57993-002	Auxiliary Spring Shim	4		34013-088L	Shim Type	
8	57993-003	Auxiliary Spring Shim	6		34013-188L	Rotating, Shim Type	
9	24531-018	½"-13 UNC x 1¾" Bolt	4	31		**Bar Pin End Bushing	4
10	24531-019	½"-13 UNC x 2¾" Bolt	8	32		Bar Pin Shim	8
11	22962-014	½" Hardened Washer	40		50130-000	0.19"/0.19"	
12	49846-000	½"-13 UNC Locknut	16		50131-000	0.25"/0.12"	
13	57878-003	Rebound Strap	2	33	48941-000	1"-8 UNC x 6" Hex Bolt	4
14	57787-000	*Anchor Plate	2	34	22962-008	1" Hardened Washer	8
15	24531-017	½"-13 UNC x 2¼" Bolt	4	35	48942-000	1"-8 UNC Locknut	4
16	57461-000	Saddle Vee Bracket	2	36	44643-011	Cross Tube	1
	58440-001	<b>Vee Bracket Fastener Kit, One Side,</b> Includes Key Nos. 17-19		37	60218-000	**** <b>Two-Piece ULTRA ROD® Longitudinal Torque Rod Straddle/Straddle Kit,</b> Includes Key No. 38	
17	50764-006	¾"-10 UNC-2A Hex Head Bolt	8	38	47691-000	ULTRA ROD Straddle Bushing	4
18	22962-001	¾" Washer	16	39	22186-000	Torque Rod Frame Bracket	4
19	49842-000	¾"-10 UNC-2B Locknut	8	40	45045-003	Backup Plate	2
20	60680-003L	Shock Absorber	4	41	60215-000	***** <b>Two-Piece ULTRA ROD Transverse Torque Rod Straddle/Taper Kit,</b> Includes Key No. 42-43	
21	22962-001	¾" Washer	4	42	47691-000	ULTRA ROD Straddle Bushing	2
22	30585-000	⅝" Upper Shock Locknut	4	43	64697-000	ULTRA ROD Taper Bushing	2
23	22962-004	⅝" Upper Shock Washer	4	44		***Transverse Rod Axle Bracket	2
24	58227-	*Beam Assembly, Specify Length, Includes Key Nos. 11-15, 25-31	2				

NOTE: \* No longer available. Contact Hendrickson to upgrade to a conversion.

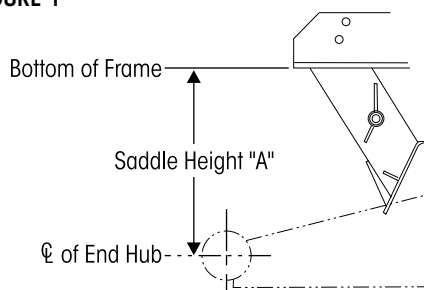
\*\* Item included in kit/assembly only, part not sold separately.

\*\*\* Not supplied by Hendrickson, used for reference only. Hendrickson is not responsible for components supplied by the vehicle manufacturer. For assistance with maintenance and rebuild instructions on these components see vehicle manufacturer.

\*\*\*\* Hendrickson's part number is stamped on the rod for identification. Be sure and include suffix number when ordering, this number indicates rod length. The Hendrickson 2-piece ULTRA RODS® can be used to create the desired length, see Torque Rod Selection Guide Literature No. 45745-148.

\*\*\*\*\* Transverse rods are mandatory for HN Suspension regardless of axle spacing. See Literature No. 59310-004 for more information.

FIGURE 1



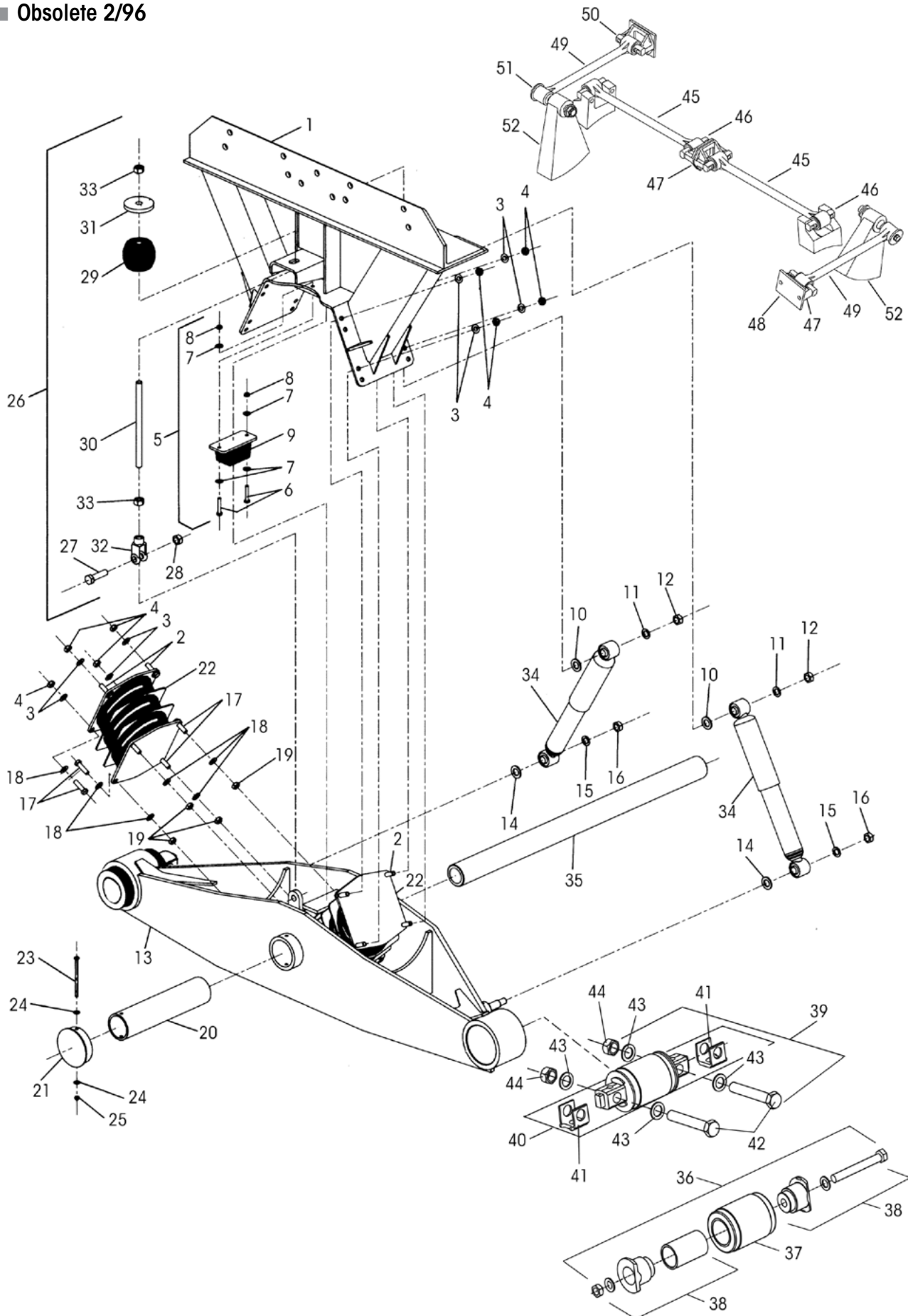
**SADDLE ASSEMBLY (KEY NO. 1)**

Following specifications required to help determined Assembly Number

- Vehicle Manufacturer
- VIN #
- Saddle Height "A"



■ Obsolete 2/96







KEY NO.	PART NO.	DESCRIPTION	VEHICLE QTY.	KEY NO.	PART NO.	DESCRIPTION	VEHICLE QTY.
1	50787-0XX	*Saddle Assembly, Includes Key Nos. 2-4, 6-9 <i>See Figure 1 below</i>	2	31	49770-000	Threaded Washer	2
2	25114-011	7/16" Bolt	16	32	49771-000	Clevis	2
3	22962-027	7/16" Washer	32	33	49778-000	5/8" Hex Nut	4
4	48949-000	7/16" Locknut	16	34	60670-002L	Shock Absorber	4
5	49399-000	<b>Rebound Rubber Stop Kit, One Side,</b> Includes Key Nos. 6-9		35	44643-011	Cross Tube	1
6	18160-011	5/16" Bolt	4	36		<b>Thru-Bolt Bushing Kit, One Wheel End,</b> Includes Key Nos. 37-38	
7	22962-029	5/16" Washer	8	34013-049L		HN 40K	
8	48948-000	5/16" Locknut	4	34013-073L		HN 46K	
9	49395-000	Rebound Rubber Stop	2	37	45900-000L	Bushing	4
10	22962-001	3/4" Inner Washer	4	38		<b>Adapter Kit, One Wheel End</b>	4
11	22962-004	5/8" Outer Washer	4	45000-007L		HN 40K	
12	30585-000	5/8" Locknut	4	21140-034L		HN 46K	
13	49976-	*Beam Assembly, Specify Length, Includes Key Nos. 17-25, 36 or 39	2	39		<b>Bar Pin End Bushing Service Kit, One Wheel End,</b> Includes Key Nos. 40-44	
14	22962-001	3/4" Inner Washer	4	34013-088L		Shim Type	
15	22962-004	5/8" Outer Washer	4	34013-188L		Rotating, Shim Type	
16	30585-000	5/8" Locknut	4	40		*Bar Pin End Bushing	4
17	25114-011	7/16" Bolt	16	41		Bar Pin Shim	8
18	22962-027	7/16" Washer	32	50130-000		0.19"/0.19"	
19	48949-000	7/16" Locknut	16	50131-000		0.25"/0.12"	
20	49972-000	Nylon Bushing	2	42	48941-000	1"-8 UNC x 6" Hex Bolt	4
21	56910-000	End Cap	2	43	22962-008	1" Hardened Washer	8
22	64718-000L	Bolster Spring	2	44	48942-000	1"-8 UNC Locknut	4
23	50698-000	1/4" Bolt	2	45	60218-000	**** <b>Two-Piece ULTRA ROD® Longitudinal Torque Rod Straddle/Straddle Kit,</b> Includes Key No. 46	
24	22962-028	1/4" Washer	4	46	47691-000	ULTRA ROD Straddle Bushing	4
25	49983-000	1/4" Locknut	2	47	22186-000	Torque Rod Frame Bracket	4
26	49768-000	<b>Rebound Control Kit, One Side,</b> Includes Key Nos. 27-33		48	45045-003	Backup Plate	2
27	32043-004	5/8" Bolt	2	49	60215-000	***** <b>Two-Piece ULTRA ROD Transverse Torque Rod Straddle/Taper Kit,</b> Includes Key No. 50-51	
28	47764-000	5/8" Locknut	2	50	47691-000	ULTRA ROD Straddle Bushing	2
29	48570-000	Rebound Control Spring	2	51	64697-000	ULTRA ROD Taper Bushing	2
30	49769-000	Anti-Roll Rod	2	52		***Transverse Rod Axle Bracket	2

NOTES: \* No longer available. Contact Hendrickson to upgrade to a conversion.

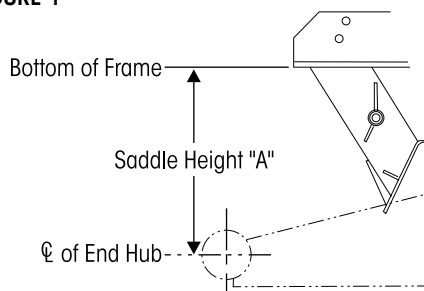
\*\* Item included in kit/assembly only, part not sold separately.

\*\*\* Not supplied by Hendrickson, used for reference only. Hendrickson is not responsible for components supplied by the vehicle manufacturer. For assistance with maintenance and rebuild instructions on these components see vehicle manufacturer.

\*\*\*\* Hendrickson's part number is stamped on the rod for identification. Be sure and include suffix number when ordering, this number indicates rod length. The Hendrickson 2-piece ULTRA RODS® can be used to create the desired length, see Torque Rod Selection Guide 45745-148.

\*\*\*\*\* Transverse rods are mandatory for HN Suspension regardless of axle spacing. See Literature No. 59310-004 for more information.

FIGURE 1

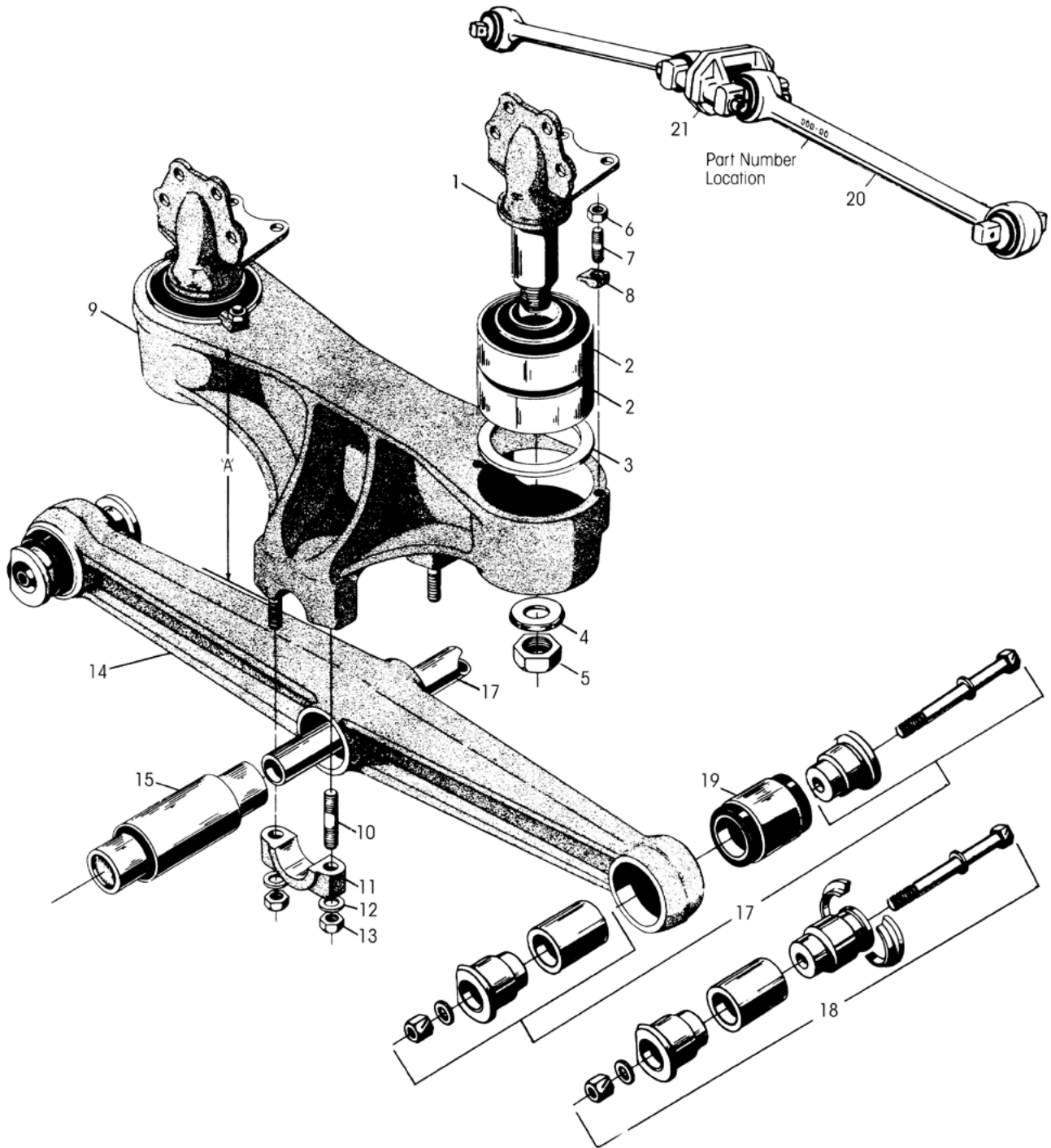


**SADDLE ASSEMBLY (KEY NO. 1)**

Following specifications required to help determine Assembly Number

- Vehicle Manufacturer
- VIN #
- Saddle Height "A"

■ Obsolete 1/89





KEY NO.	PART NO.	DESCRIPTION	VEHICLE QTY.	KEY NO.	PART NO.	DESCRIPTION	VEHICLE QTY.
1	23217-013	*Frame Hanger, Undrilled, Includes Key Nos. 4-5 (Casting No. 21283-001)	4	15		***Center Bushing	2
2	15137-000	*Shear Spring	8		06664-000L	w/ Welded Plug	
3	21278-000	Spacer Ring	4		22279-000L	w/Loose Plug	
4	21037-000	*Washer	4	16	44642-008L	Cross Tube – 44 $\frac{7}{8}$ " Length	1
5	25151-000	1 $\frac{1}{2}$ "-12 UNF Locknut	4	17		<b>End Bushing Adapter Kit, One Wheel End,</b>	
6	19114-000	$\frac{5}{8}$ "-18 UNF Locknut	8		45000-013L	5 $\frac{1}{4}$ " Length, Includes Key No. 19a	
7	19111-001	$\frac{5}{8}$ "-18 UNF Stud, <i>Replaces 19111-005</i>	8		45000-007L	5 $\frac{3}{4}$ " Length, Includes Key No. 19b	
8	21297-000	*Clamp	8	18		<b>End Bushing Adapter Kit, One Wheel End,</b>	
9		*Saddle Assembly - Dim. 'A', Includes Key Nos. 2-3, 6-8 & 10-13	2		45000-014L	5 $\frac{1}{4}$ " Length, Includes Key No. 19a	
	18760-003	12 $\frac{7}{8}$ " Height			45000-008L	5 $\frac{3}{4}$ " Length, Includes Key No. 19b	
	18760-011	13 $\frac{3}{4}$ " Height		19		End Bushing	4
10	09029-000	$\frac{7}{8}$ "-14 UNF/9 UNC Saddle Cap Stud	8	a	06969-000L	5 $\frac{1}{4}$ " Length	
11	06662-000	Saddle Cap	4	b	45900-000L	5 $\frac{3}{4}$ " Length	
12	22962-002	$\frac{7}{8}$ " Hardened Washer	8	20	60218-000	<b>**Two Piece Torque Rod Kit, Replaces 32271-</b>	2
13	04842-000	$\frac{7}{8}$ "-14 UNF Saddle Cap Locknut	8	21	22186-000	Torque Rod Frame Bracket	2
14		Equalizing Beam Assembly <i>See Selection Guide 45745-147</i>	2				

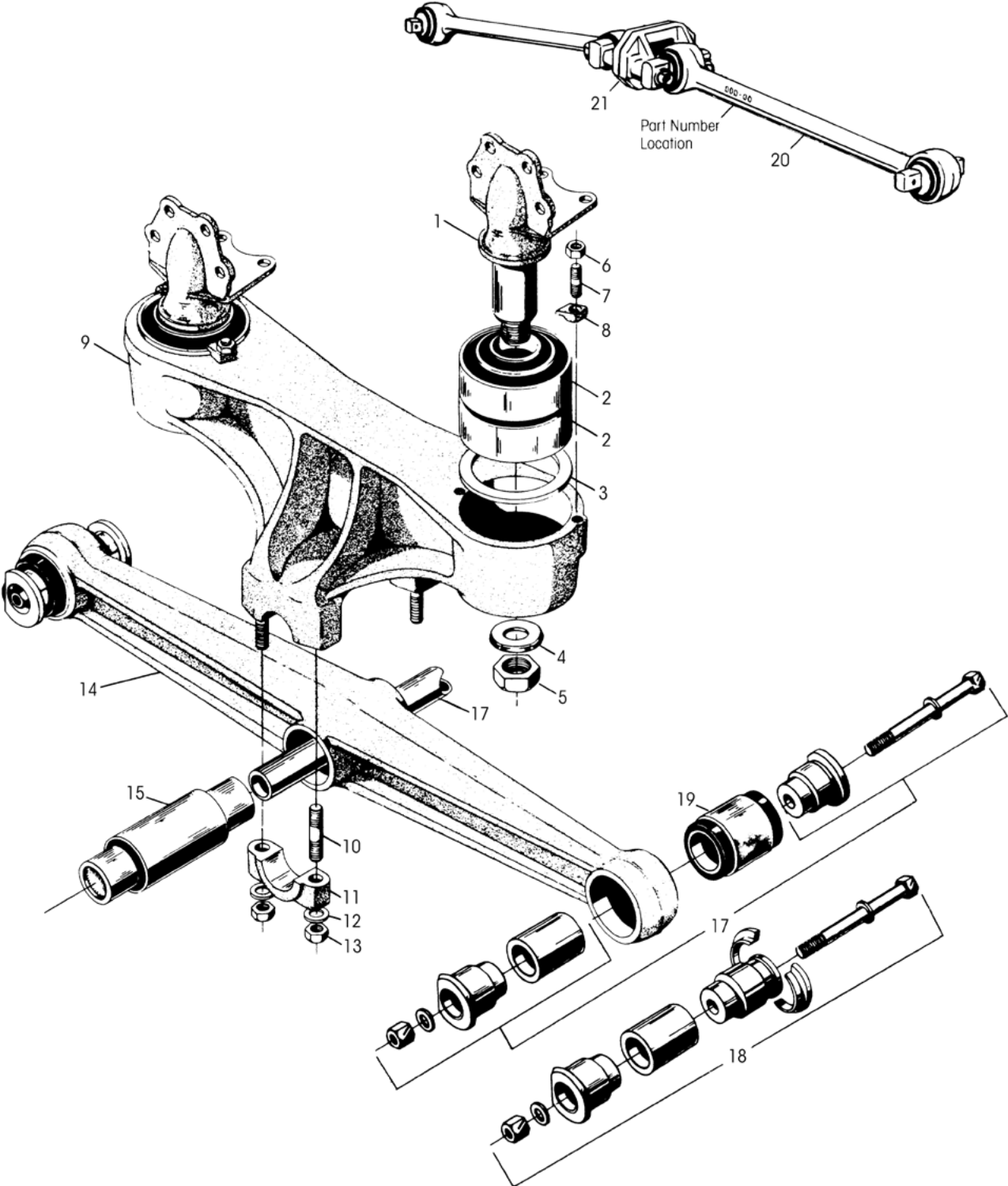
**NOTES:** \* No longer available. Contact Hendrickson to upgrade to a conversion.

\*\* Hendrickson's part number is stamped on the rod for identification. Be sure and include suffix number when ordering, this number indicates rod length. The Hendrickson 2-piece ULTRA RODS® can be used to create the desired length, see Torque Rod Selection Guide 45745-148.

\*\*\* Hendrickson recommends the use of OTC installation tools for center bushing replacement.



■ Obsolete 1/89





KEY NO.	PART NO.	DESCRIPTION	VEHICLE QTY.	KEY NO.	PART NO.	DESCRIPTION	VEHICLE QTY.
1	23217-013	*Frame Hanger, Undrilled, Includes Key Nos. 4-5 (Casting No. 21283-001)	4	12	22962-002	7/8" Hardened Washer	8
2	15137-000	*Shear Spring	8	13	04842-000	7/8"-14 UNF Saddle Cap Locknut	8
3	21278-000	Spacer Ring	4	14		Equalizing Beam Assembly <i>See Selection Guide 45745-147</i>	2
4	21037-000	*Washer	4	15		***Center Bushing	2
5	25151-000	1 1/2"-12 UNF Locknut	4		05919-000L	w/Welded Plug	
6	19114-000	5/8"-18 UNF Locknut	8		22282-000L	w/Loose Plug	
7	19111-001	5/8"-18 UNF Stud, <i>Replaces 19111-005</i>	8	16	44643-009L	Cross Tube – 44 7/8" Length	1
8	21297-000	*Clamp	8	17	45000-007L	<b>End Bushing Adapter Kit, One Wheel End,</b> Includes Key No. 19	
9		*Saddle Assembly, Includes Key Nos. 2-3, 6-8 & 10-13	2	18	45000-008L	<b>End Bushing Adapter Kit, One Wheel End,</b> w/Split Ring, Includes Key No. 19	
	18760-005	12 7/8" Height		19	45900-000L	End Bushing – 5 3/4" Length	4
	18760-013	13 3/4" Height	2	20	60218-000	<b>**Two Piece Torque Rod Kit, Replaces 32271-</b>	2
10	09030-000	7/8"-14 UNF/9 UNC Saddle Cap Stud	8	21	22186-000	Torque Rod Frame Bracket	2
11	58795-000	Saddle Cap, <i>Replaces 06612-000</i>	4				

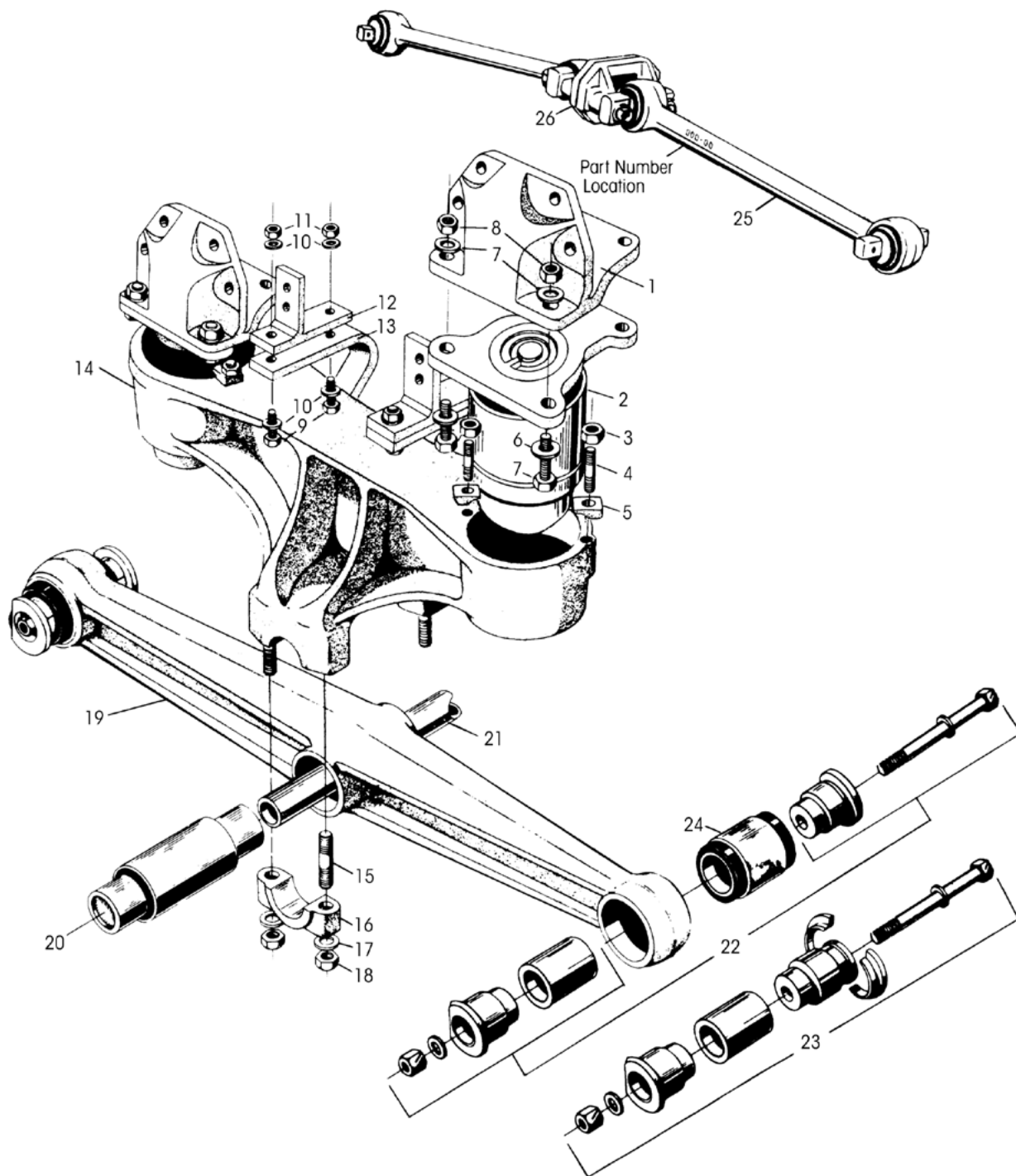
**NOTES:**\* No longer available. Contact Hendrickson to upgrade to a conversion.

\*\* Hendrickson's part number is stamped on the rod for identification. Be sure and include suffix number when ordering, this number indicates rod length. The Hendrickson 2-piece ULTRA RODS® can be used to create the desired length, see Torque Rod Selection Guide 45745-148.

\*\*\* Hendrickson recommends the use of OTC installation tools for center bushing replacement.



■ Obsolete 1/89





KEY NO.	PART NO.	DESCRIPTION	VEHICLE QTY.	KEY NO.	PART NO.	DESCRIPTION	VEHICLE QTY.
1		*Frame Hanger, Drilled (Casting No. 46205-000)	4	15	09029-000	7/8"-14 UNF/9 UNC Saddle Cap Stud	8
	46202-001	Fits Frame Width 34"		16	06662-000	Saddle Cap	4
	46202-002	Fits Frame Width 34.12"		17	22962-002	7/8" Hardened Washer	8
	46202-003	Fits Frame Width 34.25"		18	04842-000	7/8"-14 UNF Locknut	8
	46202-004	Fits Frame Width 34.38"		19		Equalizing Beam Assembly <i>See Selection Guide 45745-147</i>	
	46202-005	Fits Frame Width 34.5"		20		***Center Bushing	2
	46202-006	Fits Frame Width 34.62"			06664-000L	w/o Welded Plug	
	46202-007	Fits Frame Width 34.81"			22279-000L	w/ Loose Plug	
2	47585-075	*V4 Visco Elastic Module	4	21	44642-008L	Cross Tube - 447/8" Length	1
3	19114-000	5/8"-18 UNF Locknut	8	22		<b>End Bushing Adapter Kit, One Wheel End</b>	
4	19111-001	5/8"-18 UNF Stud	8		45000-013L	5 1/4" Length, Includes Key No. 24a	
5	21297-000	*Clamp	8		45000-007L	5 3/4" Length, Includes Key No. 24b	
6	21867-038	3/4"-16 UNF Hex Bolt	8	23		<b>End Bushing Adapter Kit, One Wheel End,</b>	
7	22962-001	3/4" Hardened Washer	16			w/Split Ring	
8	30191-000	3/4"-16 UNF Locknut	8		45000-014L	5 1/4" Length, Includes Key No. 24a	
9	30970-007	1/2"-20 UNF Hex Bolt	4		45000-008L	5 3/4" Length, Includes Key No. 24b	
10	22962-011	1/2" Hardened Washer	8	24		End Bushing	4
11	30978-000	1/2"-20 UNF Locknut	4	a	06969-000L	1/4" Length	
12	46970-002	*Jounce Stop Hanger	4	b	45900-000L	5 3/4" Length	
13	46210-000	*Rebound Stop	4	25	60218-000	<b>**Two Piece Torque Rod Kit, Replaces 32271-</b>	2
14		*Saddle Assembly	2	26	22186-000	Torque Rod Frame Bracket	2
	47680-001	12 7/8" Height					
	47680-002	13 3/4" Height	2				

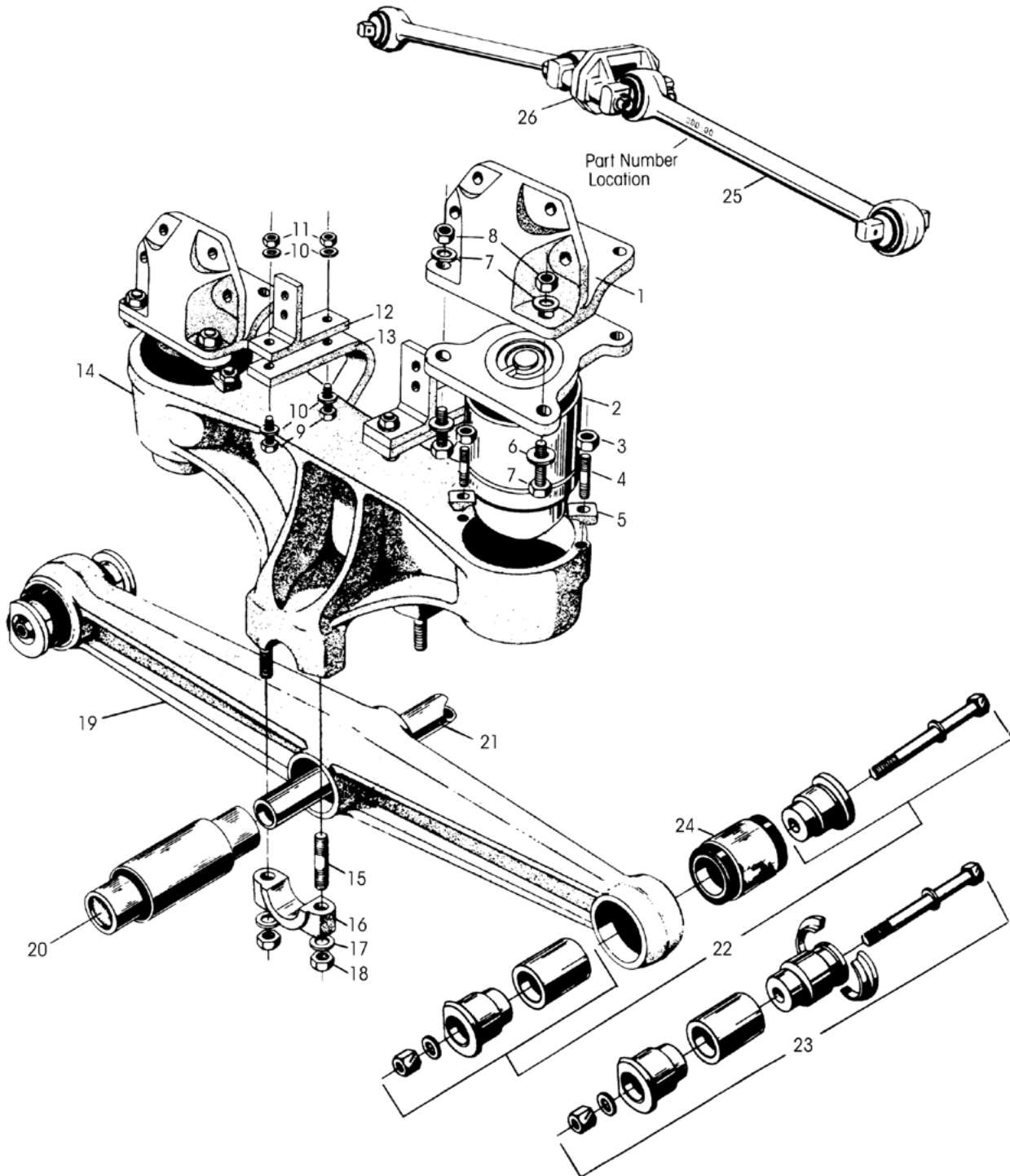
**NOTES:** \* No longer available. Contact Hendrickson to upgrade to a conversion.

\*\* Hendrickson's part number is stamped on the rod for identification. Be sure and include suffix number when ordering, this number indicates rod length. The Hendrickson 2-piece ULTRA RODS® can be used to create the desired length, see Torque Rod Selection Guide 45745-148.

\*\*\* Hendrickson recommends the use of OTC installation tools for center bushing replacement.



■ Obsolete 1/89







KEY NO.	PART NO.	DESCRIPTION	VEHICLE QTY.	KEY NO.	PART NO.	DESCRIPTION	VEHICLE QTY.
1		*Frame Hanger, Drilled (Casting No. 46205-000)	4	14		*Saddle Assembly	2
	46202-001	Fits Frame Width 34"			47680-005	12 $\frac{1}{8}$ " Height	
	46202-002	Fits Frame Width 34.12"			47680-006	13 $\frac{3}{4}$ " Height	
	46202-003	Fits Frame Width 34.25"		15	09030-000	$\frac{7}{8}$ "-14 UNF/9 UNC Saddle Cap Stud	8
	46202-004	Fits Frame Width 34.38"		16	58795-000	Saddle Cap, <i>Replaces 06612-000</i>	4
	46202-005	Fits Frame Width 34.5"		17	22962-002	$\frac{7}{8}$ " Hardened Washer	8
	46202-006	Fits Frame Width 34.62"		18	04842-000	$\frac{7}{8}$ "-14 UNF Locknut	8
	46202-007	Fits Frame Width 34.81"		19		Equalizing Beam Assembly <i>See Selection Guide 45745-147</i>	
2	47585-085	*V4 Visco Elastic Module	4	20		***Center Bushing	2
3	19114-000	$\frac{5}{8}$ "-18 UNF Locknut	8		05919-000L	Center Bushing w/Welded Plug	
4	19111-001	$\frac{5}{8}$ "-18 UNF Stud	8		22282-000L	Center Bushing w/Loose Plug	
5	21297-000	*Clamp	8	21	44643-009L	Cross Tube – 44 $\frac{7}{8}$ " Length	1
6	21867-038	$\frac{3}{4}$ "-16 UNF Hex Bolt	8	22	45000-007L	<b>End Bushing Adapter Kit, One Wheel End</b> Includes Key No. 24	
7	22962-001	$\frac{3}{4}$ " Hardened Washer	16	23	45000-008L	<b>End Bushing Adapter Kit, One Wheel End,</b> With Split Ring, Includes Key No. 24	
8	30191-000	$\frac{3}{4}$ "-16 UNF Locknut	8	24	45900-000L	End Bushing – 5 $\frac{3}{4}$ " Length	4
9	30970-007	$\frac{1}{2}$ "-20 UNF Hex Bolt	4	25	60218-000	** <b>Two Piece Torque Rod Kit, Replaces 32271-</b>	2
10	22962-011	$\frac{1}{2}$ " Hardened Washer	8	26	22186-000	Torque Rod Frame Bracket	
11	30978-000	$\frac{1}{2}$ "-20 UNF Locknut	4				
12	46970-002	*Jounce Stop Hanger	4				
13	46210-000	*Rebound Stop	4				

**NOTES:** \* No longer available. Contact Hendrickson to upgrade to a conversion.

\*\* Hendrickson's part number is stamped on the rod for identification. Be sure and include suffix number when ordering, this number indicates rod length. The Hendrickson 2-piece ULTRA RODS® can be used to create the desired length, see Torque Rod Selection Guide 45745-148.

\*\*\* Hendrickson recommends the use of OTC installation tools for center bushing replacement.

This is a general parts list to provide directional information. Components may vary by model. Questions in regards to parts, contact Hendrickson Truck Parts at 1.866.755.5968 (Toll-free U.S. and Canada), 630.910.2800 (Outside U.S. and Canada) or e-mail: [truckparts@hendrickson-intl.com](mailto:truckparts@hendrickson-intl.com).

---

[www.hendrickson-intl.com](http://www.hendrickson-intl.com)



Truck Commercial Vehicle Systems  
800 South Frontage Road  
Woodridge, IL 60517-4904 USA

1.866.755.5968 (Toll-free U.S. and Canada)  
630.910.2800 (Outside U.S. and Canada)  
Fax 630.910.2899