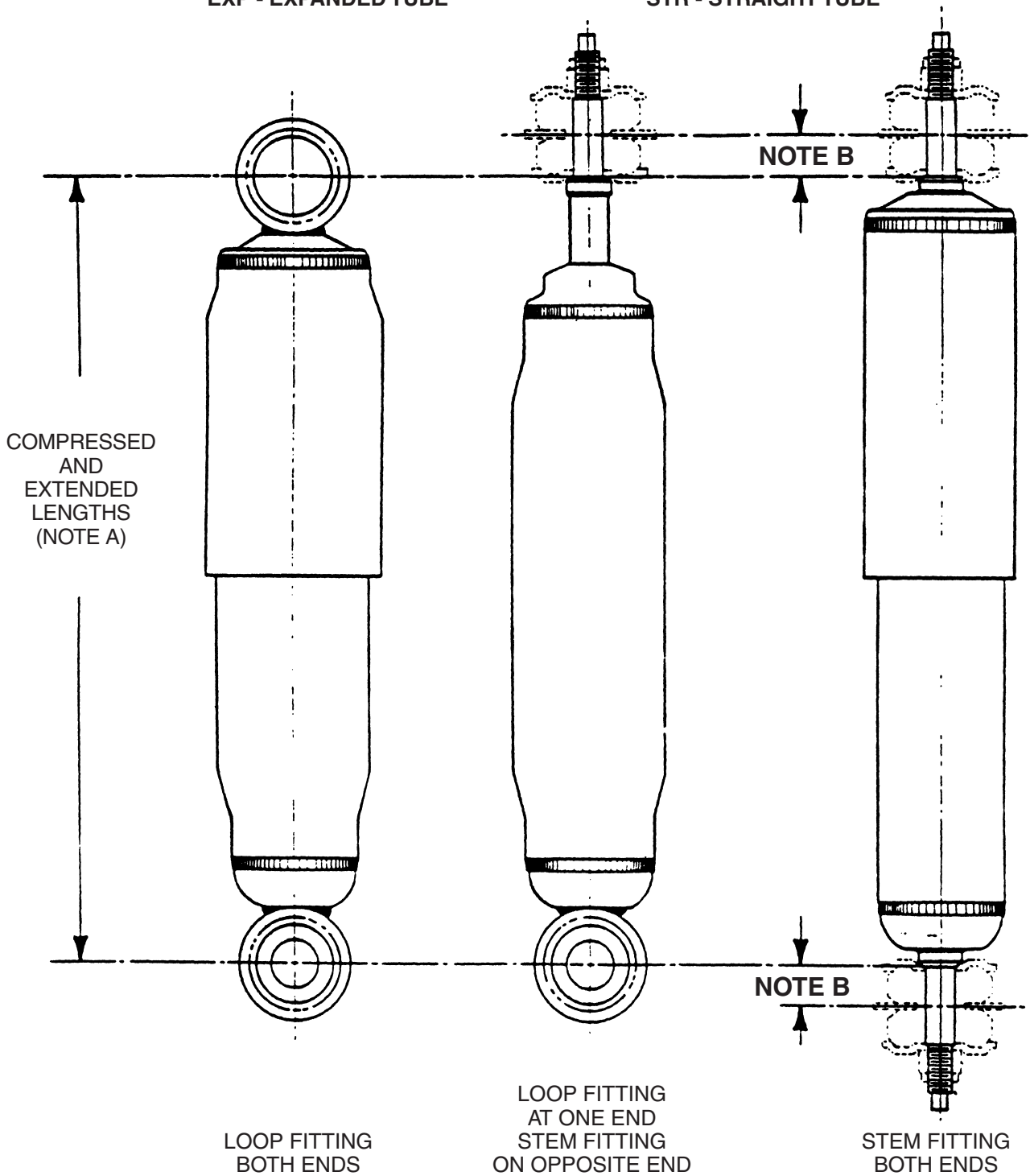


LENGTH AND MOUNTING DIMENSIONING

RESERVE TUBE CODES

EXP - EXPANDED TUBE

STR - STRAIGHT TUBE



NOTE A:

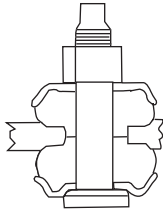
Compressed and extended lengths listed are taken from the center of loops and/or from the stem shoulders.

NOTE B:

When measuring from the brackets on a vehicle, allow 5/8" for each standard stem end and allow 7/8" for each large stem end.

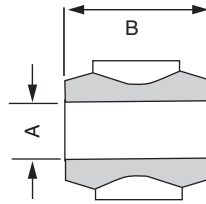
MOUNTING CODES

STEM



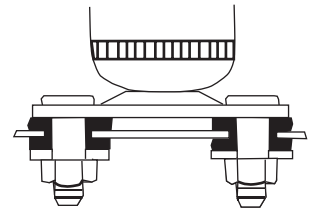
CODE	THREAD
S1	M10
S2	M12
S3	3/8 - 24
S4	3/8 - 16
S5	1/2 - 13
S6	5/8 - 11

LOOP MOUNTING



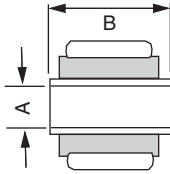
CODE	A	B
L1	5/8	1 5/16
L2	1 1/16	1 9/16
L3	3/4	1 9/16
L4	1	1 3/4
L5	1 1/4	2 9/16

STUD PLATE



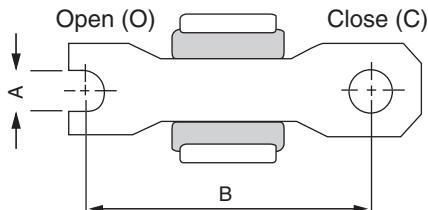
CODE SP

BUSHING & SLEEVE



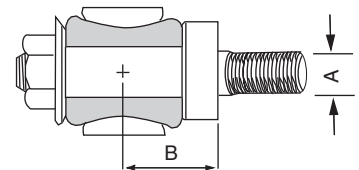
CODE	A	B	CODE	A	B	CODE	A	B	CODE	A	B
LS1	10MM	15/16	LS26	12MM	1 1/2	LS51	5/8/16MM	1 9/16	LS76	1/2	2 3/8
LS2	10MM	1	LS27	12MM	1 9/16	LS52	5/8/16MM	1 11/16	LS77	1/2	2 7/16
LS3	10MM	1 1/4	LS28	12MM	1 5/8	LS53	5/8/16MM	2	LS78	9/16	1 1/2
LS4	10MM	1 3/8	LS29	12MM	1 3/4	LS54	3/4	1 3/4	LS79	5/8/16MM	1 3/8
LS5	10MM	1 7/16	LS30	12MM	1 7/8	LS55	18MM	1 5/8	LS80	5/8/16MM	1 3/4
LS6	10MM	1 9/16	LS31	12MM	2	LS56	20MM	1 9/16	LS81	5/8/16MM	1 7/8
LS7	10MM	1 5/8	LS32	12MM	2 1/8	LS57	20MM	2	LS82	5/8/16MM	1 1/2
LS8	10MM	2	LS33	12MM	2 5/16	LS58	20MM	2 7/16	LS83	18MM	2
LS9	10MM	2 1/8	LS34	12MM	2 7/8	LS59	3/4	3 13/16	LS84	12MM	2 3/8
LS10	10MM	2 3/8	LS35	1/2	1 1/4	LS60	3/4	3 3/16	LS85	5/8/16MM	1 3/16
LS11	10MM	3	LS36	1/2	1 9/16	LS61	5/8/16MM	4	LS86	3/4	2 5/16
LS12	7/16	1 1/4	LS37	1/2	1 3/8	LS62	5/8/16MM	2 9/16	LS87	5/8/16MM	3 9/16
LS13	7/16	1 9/16	LS38	1/2	1 1/2	LS63	1/2	1/2	LS88	14MM	2 7/16
LS14	7/16	1 3/8	LS39	1/2	1 5/8	LS64	21MM	1 15/16	LS89	1	1 3/4
LS15	7/16	1 7/16	LS40	1/2	1 11/16	LS65	1	2	LS90	14MM	2 5/8
LS16	7/16	1 5/8	LS41	1/2	2 1/4	LS66	3/4	1 3/8	LS91	14MM	1 3/4
LS17	7/16	1 7/8	LS42	14MM	1 9/16	LS67	3/4	1 11/16	LS92	14MM	1 11/16
LS18	7/16	2 1/8	LS43	14MM	1 9/16	LS68	3/4	1 7/8	LS93	18MM	3 1/4
LS19	7/16	3 3/16	LS44	14MM	1 7/8	LS69	3/4	1 15/16	LS94	5/8/16MM	2 3/4
LS20	7/16	3 3/8	LS45	14MM	2 7/16	LS70	3/4	2 1/4	LS95	20MM	2 3/8
LS21	12MM	1	LS46	14MM	3 1/8	LS71	3/4	2 3/4	LS96	1/2	1 7/8
LS22	12MM	1 1/8	LS47	9/16	1 5/8	LS72	7/16	2	LS97	1/2	2 3/4
LS23	12MM	1 1/4	LS48	9/16	2 7/16	LS73	7/16	2 1/2	LS98	5/8/16MM	3
LS24	12MM	1 3/8	LS49	5/8/16MM	1 3/16	LS74	12MM	1 11/16	LS99	5/8/16MM	3 1/4
LS25	12MM	1 7/16	LS50	5/8/16MM	1 1/2	LS75	20MM	1 3/4			

CROSS PIN MOUNTING



CODE	END	A	B	CODE	END	A	B
XP1	O	5/16	2 3/16	XP8	O	5/16	3
XP2	O	5/16	2 3/8	XP9	O	5/16	3 5/8
XP3	O	5/16	2 7/16	XP10	O	3/8	2 5/8
XP4	C	5/16	2 7/16	XP11	C	3/8	2 3/4
XP5	C	5/16	2 1/2	XP12	O	3/8	3 3/16
XP6	O	5/16	2 3/4	XP13	C	12MM	2 15/16
XP7	C	5/16	2 7/8				

CANTILEVER PIN MOUNTING



CODE	A	B
CP1	1/2	1 1/16
CP2	1/2	1 3/16
CP3	1/2	1 5/16
CP4	1/2	1 1/2
CP5	5/8	1 5/16

MOUNTING & LENGTH CHARTS

Unit No.	Mounting Code		Lengths			Reserve Tube	Controls		Dust Shield	Part Package
	Upper	Lower	Compress	Extend	Travel		Rebound	Compress		
GAS-MAGNUM® SHOCK ABSORBERS										
34501	S4	SPEC	10.875	15.250†	4.375				Yes	P1135
34504	S5	LS37	10.375	15.125†	4.750				Yes	P1167
34514	S5	XP10	9.875	14.250†	4.375				Yes	P1167
34515	LS47	LS47	16.000	26.500	10.500				Yes	None
34516	S5	LS47	10.750	15.875†	5.125				Yes	P1167
34517	XP7	LS26	15.250	25.125	9.875				Yes	None
34518	L1	LS26	13.750	21.875†	8.125				Yes	None
34519	XP7	LS26	16.750	28.250	11.500				Yes	None
34520	S5	SP12	11.000	16.375†	5.375				Yes	P1167
34521	LS47	LS47	16.500	27.500	11.000				Yes	None
34522	S5	LS47	14.500	22.750†	8.250				Yes	P1167
34523	S5	LS47	13.625	20.750	7.125				Yes	P1167
34524	LS49	LS26	14.750	24.750	10.000				Yes	None
34655	S5	XP5	10.250	14.875†	4.625	2.00			Yes	P1167
34656	S4	LS26	14.375	24.250	9.875	2.00			Yes	P1135
34657	S4	S3	10.000	14.250†	4.250	2.00			Yes	P1135
34658	S4	LS26	16.000	27.500	11.500	2.00			Yes	P1135
34671	LS26	LS26	13.625	21.625†	8.000	2.36			Yes	None
34672	LS26	LS26	14.250	23.000†	8.750	2.36			Yes	None
34673	S4	LS43	14.250	23.875	9.625	2.00			Yes	P1135
34674	S4	LS43	16.125	27.375	11.250	2.00			Yes	P1135
34675	S4	XP5	10.375	14.375†	4.000	2.00			Yes	P1135
34676	LS47	LS47	15.500	23.750†	8.250	2.36			Yes	None
34677	S4	SPEC	11.000	15.125†	4.125	2.36			Yes	P1135
34678	LS47	LS47	16.750	25.500†	8.750	2.36			Yes	None
34681	LS26	LS26	14.000	20.125†	6.125	2.36			Yes	None
34684	S5	L1	10.125	15.000†	4.875	2.00			Yes	P1167
34685	L1	LS26	16.500	28.250	11.750	2.25			Yes	None
34686	L1	LS26	14.250	22.875†	8.625	2.25			Yes	None
34687	L1	LS26	18.000	31.000	13.000	2.36			Yes	None
34689	S5	XP5	10.250	15.000†	4.750				Yes	P1167
34690	LS47	LS47	16.000	26.000†	10.000				Yes	None
34692	LS47	LS47	14.750	23.500†	8.750				Yes	None
34693	LS47	LS47	14.375	23.000†	8.625				Yes	None
34694	LS47	LS47	15.000	24.125†	9.125				Yes	None
34729	S4	LS26	10.000	14.625†	4.625	2.00			Yes	P1135
34730	S4	LS26	10.500	15.875†	5.375	2.00			Yes	P1135
34731	L1	LS26	12.750	20.500	7.750	2.36			Yes	None
34732	LS26	LS26	14.000	22.500†	8.500	2.36			Yes	None
34733	LS26	L1	16.375	27.250	10.875	2.36			Yes	None
34736	L1/CP1	S3	10.375	16.000	5.625	2.36			Yes	P19
34741	S4	XP5	9.625	14.000†	4.375	2.00			No	P1134
34750	S4	XP8	8.875	13.375	4.500	2.00			No	P1135
34755	S4	LS54	14.500	22.750†	8.250	2.00			Yes	None
34756	XP5	S4	14.000	22.750†	8.750	2.36			Yes	None
34759	S4	LS26	12.500	19.875†	7.375	2.00			Yes	P1135
34760	S4	L1	9.875	14.625†	4.750	2.00			Yes	P1135
34761	S4	LS26	13.125	21.750	8.625	2.00			Yes	P1135
34762	XP7	LS47	13.875	22.500†	8.625	2.36			Yes	None
34763	XP7	LS47	14.625	23.875†	9.250	2.36			Yes	None
34767	XP7	LS47	15.250	25.250†	10.000	2.36			Yes	None
34771	S3	L2	16.625	28.500†	11.875	2.36			Yes	None
34776	S5	S4	9.500	13.750†	4.250	2.00			Yes	P1167
34777	LS47	LS47	15.375	24.625	9.250	2.36			Yes	None
34778	S5	S4	13.875	21.750‡	7.875	2.02			Yes	P1167
34781	LS47	LS47	15.750	26.125	10.375	2.36			Yes	None
34782	S5	S4	14.375	22.750‡	8.375	2.36			Yes	P1167
34783	S3	S4	15.125	24.625†	9.500	2.00			Yes	None
34787	S5	S5	14.250	23.250†	9.000	2.36			Yes	Two P1167
34788	S4	L3	14.375	23.250†	8.875	2.36			Yes	P120, P1135
34791	L1	L1	16.125	27.250	11.125	2.36			Yes	None

† Bumper Stop Unit. Dimensions shown at Bumper Contact.

‡ Hydraulic Lockout Unit. Dimension shown at Lockout Contact.

MOUNTING & LENGTH CHARTS

Unit No.	Mounting Code		Lengths			Reserve Tube	Controls		Dust Shield	Part Package
	Upper	Lower	Compress	Extend	Travel		Rebound	Compress		

GAS-MAGNUM® SHOCK ABSORBERS — Continued

34792	S4	S4	11.500	18.875†	7.375	1.64			Yes	Two P1134
34793	S4	LS26	10.125	15.000†	4.875	2.00			Yes	P1135
34794	S4	XP8	9.250	13.625	4.375	2.00			No	P1135
34796	S4	L1	9.375	14.250†	4.875	2.00			Yes	P1135
34797	L1	LS26	14.000	22.250†	8.250	2.36			Yes	None
34798	LS77	S3	11.375	16.500†	5.125	2.00			Yes	None
34799	LS77	S3	11.750	15.875‡	4.125	2.00			Yes	None
34802	L1	L1	14.000	22.750	8.750	2.00			Yes	P829
34803	L1	L1	13.250	21.000	7.750	2.00			Yes	P573
34817	L1/CP1	S3	9.875	14.625	4.750	2.36			Yes	P19
34821	L1	LS38	14.250	22.875	8.625	2.36			Yes	None
34822	S3	S3	13.875	22.750	8.875	2.36			Yes	None
34824	L1/CP1	S4	14.000	22.875	8.875	2.36			Yes	P19
34826	L3	S3	12.625	18.500†	5.875	2.00			No	P120
34828	L3	L3	13.125	21.000	7.875	2.00			Yes	P575
34831	S4	XP8	8.875	13.375	4.500	2.00			No	P1135
34832	S3	L2	14.750	24.375	9.625	2.36			Yes	None
34839	S3	S3	9.750	14.750	5.000	2.36			Yes	None
34853	L2	L2	13.250	21.125	7.875	2.36			Yes	None
34854	S3	L2	15.625	26.250	10.625	2.36			Yes	None
34868	S4	XP8	10.000	15.500	5.500	2.00			No	P1135
34899	S4	S3	9.875	14.375†	4.500	2.00			Yes	P1135
34900	S4	S3	10.625	15.875†	5.250	2.00			No	P1135
34901	S4	S3	13.750	22.625	8.875	2.36			Yes	P1135
34904	L1	L1	11.875	18.125	6.250	2.00			Yes	P411
34905	L1	L1	12.625	19.750	7.125	2.00			Yes	None
34906	S4	S3	10.125	16.750†	6.625	2.36			Yes	P1135
34907	S4	S3	13.375	21.250†	7.875	2.36			Yes	P1135
34909	S4	S4	13.250	22.000†	8.750	2.36			Yes	Two P1134
34910	LS39	LS39	13.000	20.875	7.875	2.00			Yes	None
34911	S4	LS38	12.375	19.750	7.375	2.00			Yes	P1136
34912	L1/CP1	LS54	14.125	23.000	8.875	2.00			Yes	P19
34919	S3	S3	11.625	18.250	6.625	2.36			Yes	P816
34920	S4	S4	15.500	26.125	10.625	2.36			Yes	None
34926	S4	L1	11.500	18.375	6.875	2.00			Yes	P1135
34927	L1	LS26	13.500	21.750	8.250	2.36			Yes	None
34928	S4	LS26	11.625	18.500	6.875	2.36			Yes	P864, P1135
34929	S4	S4	14.750	24.625	9.875	2.36			Yes	None
34930	L1	LS26	14.875	24.750	9.875	2.36			Yes	None
34944	LS37	LS37	11.750	18.375	6.625	2.36			Yes	P816
34953	S4	XP5	9.375	14.500	5.125	1.86			Yes	P1134
34954	S4	L1	11.500	19.125	7.625	1.86			Yes	P1137
34958	L1	S3	12.625	20.375	7.750	2.36			Yes	P826
34959	S4	L3	13.250	21.500	8.250	2.00			Yes	P122, P1134
34960	S4	S4	14.125	22.875	8.750	2.36			Yes	None
34963	L1	LS26	14.125	22.875	8.750	2.36			Yes	None
34964	L1	LS26	15.750	26.375	10.625	2.36			Yes	None
34970	S4	S4	10.375	14.500†	4.125	2.00			No	P694
34971	LS27	LS27	13.375	21.000†	7.625	2.00			Yes	None
34983	S4	XP5	9.500	13.750†	4.250	2.36			No	P1134
34985	XP7	S4	16.125	26.750†	10.625	2.00			Yes	None

SENSA-TRAC® TRUCK SHOCK ABSORBERS

37011	S4	LS26	9.875	14.500†	4.625				Yes	P1135
37012	S4	LS26	10.000	15.500†	5.500				Yes	P1135
37012	S4	LS26	11.000	16.250†	5.250				Yes	P1135
37013	L1	LS26	14.375	23.000	8.625				Yes	P827
37014	L1	LS26	16.000	26.375	10.375				Yes	P827
37015	S4	L1	9.750	14.500†	4.750				Yes	P1135
37016	S4	LS27	9.000	13.000†	4.000				Yes	P1135
37017	L3	LS27	14.625	23.500†	8.875				Yes	P867
37018	S4	L1	10.000	15.500†	5.500				Yes	P1135

† Bumper Stop Unit. Dimensions shown at Bumper Contact.

‡ Hydraulic Lockout Unit. Dimension shown at Lockout Contact.

MOUNTING & LENGTH CHARTS

Unit No.	Mounting Code		Lengths			Reserve Tube	Controls		Dust Shield	Part Package
	Upper	Lower	Compress	Extend	Travel		Rebound	Compress		
SENSA-TRAC® TRUCK SHOCK ABSORBERS — Continued										
37019	S4	XP4	8.875	13.250	4.375				No	P1134
37021	XP7	LS47	14.500	24.000	9.500				Yes	None
37022	S4	LS23	9.625	14.375	4.750				Yes	P1134
37024	S4	L1	13.375	21.875	8.500				Yes	P1134
37026	S4	XP4	12.875	20.375†	7.500				Yes	P1136
37027	XP12	L1	12.750	20.000†	7.250				Yes	None
37029	L1	L1	14.375	23.000	8.625				Yes	None
37030	S4	LS82	9.250	13.625	4.375				Yes	P1134
37031	S4	LS23	10.500	16.375	5.875				Yes	P1134
37032	L3	L3	13.875	21.500†	7.625				Yes	P575
37033	S4	L3	13.250	20.875†	7.625				Yes	P81, P1134
37034	S4	LS26	10.000	14.750†	4.750				Yes	P1135
37035	XP7	LS26	15.000	25.125	10.125				Yes	P941
37036	S4	L1	11.625	18.375	6.750				Yes	P1135
37037	L1	LS26	13.500	21.750	8.250				Yes	None
37038	L1	LS26	15.000	24.750	9.750				Yes	None
37039	L1	LS26	15.875	26.375	10.500				Yes	None
37040	LS37	LS37	11.875	18.375	6.500				Yes	P816
37041	L1/CP5	LS47	14.125	22.875	8.750				Yes	P19
37042	LS40	LS40	13.375	21.000	7.625				Yes	None
37044	XP7	LS47	16.125	26.750†	10.625				Yes	None
37045	L2	L2	13.125	20.250†	7.125				Yes	None
37046	LS39	L2	15.750	26.125	10.375				Yes	None
37047	S4	LS23	8.125	12.125	4.000				Yes	P1137
37049	L1/CP5	LS36	10.000	14.625	4.625				Yes	P19
37050	S4	XP5	9.500	13.750†	4.250				No	P1134
37051	L1	LS26	12.000	18.125†	6.125				Yes	None
37052	L1	LS26	14.375	23.000	8.625				Yes	None
37053	S4	LS38	10.750	15.875†	5.125				Yes	P1135
37054	S4	LS26	10.500	15.875†	5.375				Yes	P1135
37055	LS26	LS26	14.000	22.500†	8.500				Yes	None
37058	S4	XP4	8.500	12.375	3.875				No	P1134
37060	S4	XP5	10.250	15.125†	4.875				Yes	P1135
37061	LS28	LS26	12.000	18.125†	6.125				Yes	None
37062	LS77	LS39	11.250	16.500†	5.250				Yes	None
37063	S4	XP5	9.250	14.000	4.750				No	P1134
37064	LS74	LS74	14.750	23.125†	8.375				Yes	None
37065	LS28	LS28	12.000	18.125†	6.125				Yes	None
37066	S4	XP2	8.625	13.000	4.375				No	P1135
37067	XP8	LS39	14.625	23.500	8.875				Yes	None
37068	S4	LS37	9.750	15.000	5.250				No	P1135
37069	XP8	LS39	15.625	26.250	10.625				Yes	None
37070	S4	LS26	12.125	18.250†	6.125				Yes	P1134
37071	S4	LS7	15.875†	20.750†	4.875				Yes	P1278
37072	S4	XP5	9.375	14.500	5.125				Yes	P1134
37073	L1	L1	13.000	20.750	7.750				Yes	None
37074	L1	S4	12.125	19.250†	7.125				Yes	P1137
37075	L3	LS43	13.625	21.250†	7.625				Yes	P867
37076	L3	LS43	14.875	23.625†	8.750				Yes	P867
37077	S4	LS23	8.875	13.750	4.875				Yes	P1134
37078	L1	L1	12.625	20.000	7.375				Yes	None
37080	S4	LS26	12.500	20.750†	8.250				Yes	P1135
37081	S4	XP4	13.000	20.750†	7.750				Yes	P1136
37082	L1	LS25	13.625	21.500†	7.875				Yes	None
37083	S4	XP4	13.250	21.125†	7.875				Yes	P1136
37085	XP7	LS47	14.000	22.375†	8.375				Yes	None
37086	XP7	LS47	14.625	23.750†	9.125				Yes	None
37087	XP7	LS47	15.375	25.250†	9.875				Yes	None
37088	S4	LS38	9.875	14.500†	4.625				Yes	P1135
37089	S4	LS38	12.250	19.625	7.375				Yes	P1134
37090	LS37	LS37	10.000	14.750	4.750				Yes	None

† Bumper Stop Unit. Dimensions shown at Bumper Contact.

‡ Hydraulic Lockout Unit. Dimension shown at Lockout Contact.

MOUNTING & LENGTH CHARTS

Unit No.	Mounting Code		Lengths			Reserve Tube	Controls		Dust Shield	Part Package
	Upper	Lower	Compress	Extend	Travel		Rebound	Compress		
SENSA-TRAC® TRUCK SHOCK ABSORBERS — Continued										
37091	LS39	LS39	13.125	20.875	7.750				Yes	None
37093	S4	XP8	8.875	13.250	4.375				No	P1135
37094	LS39	L2	14.875	24.375	9.500				Yes	None
37095	S4	LS26	10.125	14.625†	4.500				Yes	P1135
37096	S4	XP8	8.875	13.375†	4.500				No	P1135
37097	S4	XP1	8.750	13.375	4.625				No	P1134
37098	L1	L1	11.750	18.250	6.500				Yes	None
37099	LS39	LS39	11.625	16.500†	4.875				Yes	None
37100	S4	LS23	9.625	14.750	5.125				Yes	P1134
37101	L1	L1	15.125	24.875	9.750				Yes	None
37102	S5	LS47	9.500	13.750†	4.250				Yes	P1167
37103	LS47	LS47	15.500	24.625	9.125				Yes	None
37104	S5	LS47	14.000	21.750‡	7.750				Yes	P1167
37105	LS47	LS47	15.500	24.625	9.125				Yes	None
37108	S4	LS23	10.375	15.250	4.875				Yes	P1134
37109	LS78	L3	12.875	19.625†	6.750				Yes	P120
37110	LS27	LS26	10.625	15.750†	5.125				Yes	None
37111	S4	XP5	9.375	14.500	5.125				No	P1134
37112	L1	L1	12.375	19.000†	6.625				Yes	None
37113	L3	L3	13.250	20.375†	7.125				Yes	P575
37114	L3	L3	12.875	19.500†	6.625				Yes	P575
37116	S4	L1	10.250	14.875†	4.625				Yes	P1135
37117	S4	LS26	13.500	22.000	8.500				Yes	P1135
37118	S4	LS26	10.250	15.000†	4.750				Yes	P1135
37120	S4	LS38	14.500	24.375	9.875				Yes	P1135
37121	L1	LS38	11.875	18.375	6.500				Yes	None
37122	S4	XP4	13.625	18.000†	4.375				Yes	P941, P1135
37123	LS28	LS28	11.375	17.000†	5.625				Yes	None
37125	S4	XP5	9.500	13.750†	4.250				No	P1134
37128	S4	L1	9.375	14.250†	4.875				Yes	P1135
37129	S4	XP4	8.375	12.250	3.875				No	P1134
37130	LS77	LS39	11.750	16.000†	4.250				Yes	None
37131	S5	XP5	10.250	14.875†	4.625				Yes	P1167
37132	S4	LS26	14.250	23.875	9.625				Yes	P1135
37133	S4	LS39	10.000	14.375†	4.375				Yes	P1136
37134	S4	LS26	16.000	27.500	11.500				Yes	P1136
37135	XP12	LS37	12.500	19.625†	7.125				Yes	None
37137	S4	XP5	8.500	13.000	4.500				No	P1135
37138	LS28	LS28	14.625	22.750†	8.125				Yes	None
37140	LS28	LS28	15.375	24.625†	9.250				Yes	None
37144	LS26	LS26	13.750	21.750†	8.000				Yes	None
37145	LS26	LS26	14.375	23.125†	8.750				Yes	None
37146	S1	LS40	15.875	23.375†	7.500				No	None
37147	S4	LS43	14.250	23.875	9.625				Yes	P1135
37148	S4	LS43	16.125	27.375	11.250				Yes	P1136
37149	S4	XP5	10.375	14.375†	4.000				Yes	P1135
37150	LS47	LS47	15.625	23.750†	8.125				Yes	None
37151	S4	SPEC	11.000	15.125†	4.125				Yes	P1135
37152	LS47	LS47	16.875	25.500†	8.625				Yes	None
37153	S4	XP5	10.500	13.500†	3.000				Yes	P1135
37154	LS26	LS26	14.125	20.125†	6.000				Yes	None
37155	LS27	LS27	10.500	16.625†	6.125				Yes	None
37156	LS26	LS26	12.750	20.250†	7.500				Yes	None
37157	S4	L3	12.500	20.000†	7.500				Yes	P81, P1134
37158	LS52	LS30	14.500	23.250†	8.750				Yes	None
37159	S4	LS23	10.125	15.000†	4.875				Yes	P1134
37160	S4	LS78	11.875	18.500†	6.625				Yes	P1134
37161	S4	XP4	13.000	20.750†	7.750				Yes	P941, P1136
37162	LS29	LS25	13.750	21.750†	8.000				Yes	None
37163	S5	XP5	10.250	15.000†	4.750				Yes	P1167
37164	LS47	LS47	16.000	26.000†	10.000				Yes	None

† Bumper Stop Unit. Dimensions shown at Bumper Contact.

‡ Hydraulic Lockout Unit. Dimension shown at Lockout Contact.

MOUNTING & LENGTH CHARTS

Unit No.	Mounting Code		Lengths			Reserve Tube	Controls		Dust Shield	Part Package
	Upper	Lower	Compress	Extend	Travel		Rebound	Compress		
SENSA-TRAC® TRUCK SHOCK ABSORBERS — Continued										
37166	LS47	LS47	14.625	23.500†	8.875				Yes	None
37177	S4	XP4	11.625	18.000†	6.375				Yes	P941, P1135
37178	S4	SPEC	10.750	15.375†	4.625				Yes	P1135
37181	S5	LS42	10.250	15.125†	4.875				Yes	P1167
37186	S4	S4	14.000	24.250	10.250				Yes	Two P1134
37187	LS37	L1/CP5	9.375	14.250	4.875				Yes	P19
37188	L1/CP3	L1/CP3	14.000	23.625	9.625				Yes	P572, P576
37189	L2	L2	15.250	25.625	10.375				Yes	None
37190	XP9	LS38	10.625	15.750†	5.125				No	None
37191	S3	S3	13.000	21.625	8.625				Yes	Two P171
37192	L3	S3	13.625	21.750	8.125				Yes	P120, P171
37195	SPEC	SPEC	8.375	11.375†	3.000				Yes	17110284
37196	SPEC	SPEC	8.875	12.375	3.500				Yes	17110286
37197	S	S	12.875	21.500	8.625				Yes	17110046
37198	LS55	S	13.625	22.000	8.375				Yes	17110331
37199	S4	L1	14.375	24.250†	9.875				Yes	P1137
37200	LS3	LS3	11.250	17.375	6.125				Yes	None
37201	LS7	S3	10.125	15.625	5.500				Yes	P591
37202	LS26	LS26	14.875	21.250‡	6.375				Yes	None
37203	LS52	LS28	14.000	21.875†	7.875				Yes	None
37204	LS74	LS52	15.125	24.250†	9.125				Yes	None
37206	S5	XP12	9.875	14.250†	4.375				Yes	P1167
37207	LS47	LS47	16.000	26.500	10.500				Yes	None
37208	S5	LS47	10.750	15.875†	5.125				Yes	P1167
37217	S4	LS51	15.250	25.125†	9.875				Yes	P1137
37218	LS38	LS38	11.375	17.375	6.000				Yes	None
37220	S4	LS26	9.750	14.750	5.000				No	P1135
37231	S4	LS22	13.000	21.250†	8.250				Yes	P1134
37232	LS29	XP7	14.500	23.750†	9.250				Yes	None
37233	LS29	XP7	14.375	22.750†	8.375				Yes	None
37234	LS29	LS29	13.750	22.375†	8.625				Yes	None
37237	S4	LS51	17.375†	23.500†	6.125				Yes	P1136
37238	S4	LS23	13.625	22.500	8.875				Yes	P1134
37239	S4	LS23	13.125	21.500	8.375				Yes	P1134
37240	S5	LS54	14.875	24.000†	9.125				Yes	P1167, P1336
37241	LS28	LS29	17.625	23.250†	5.625				Yes	None
37242	LS28	LS29	14.625	22.250†	7.625				Yes	None
37243	S4	L1	13.000	21.500	8.500				Yes	P1137
37244	LS51	LS56	10.875	15.750†	4.875				Yes	None
37246	LS39	LS39	11.500	16.875†	5.375				Yes	None
37249	LS66	SPEC	14.000	22.000†	8.000				Yes	None
37269	S4	LS26	12.375	19.750†	7.375				Yes	P1134
37283	S5	LS29	10.100	15.100†	4.400				Yes	None
37284			15.880	26.180†	10.300					None
SENSA-TRAC® MONOTUBE SHOCK ABSORBERS										
39051	S2	SPEC	14.750	18.625	3.875				No	None
39052	S1	LS10	15.000	24.000	9.000				No	17110495
39105	S1	SPEC	14.513	18.060	3.547				Yes	None
SPECIALTY SHOCK ABSORBERS										
40004	S4	LS38	13.625	18.000	4.375				Yes	None
40005	S4	XP7	13.500	18.000	4.500				Yes	None
40006	XP7	LS26	15.000	24.000	9.000				Yes	None
40007	XP7	LS26	15.000	24.000	9.000				Yes	None
40031	LS43	LS43	15.000	22.500	7.500				Yes	None
40032	LS43	LS43	15.250	22.750	7.500				Yes	None
40033	S1	SPEC	11.000	15.375	4.375				Yes	None
40034	LS43	LS43	15.250	22.750	7.500				Yes	None
40035	S1	LS42	10.875	15.375	4.500				Yes	None
40036	LS43	LS43	15.625	23.875	8.125				Yes	None
40037	S1	XP5	10.375	14.500	4.125				Yes	None
40038	S1	SPEC	11.000	15.375	4.375				Yes	None

† Bumper Stop Unit. Dimensions shown at Bumper Contact.

‡ Hydraulic Lockout Unit. Dimension shown at Lockout Contact.

MOUNTING & LENGTH CHARTS

Unit No.	Mounting Code		Lengths			Reserve Tube	Controls		Dust Shield	Part Package
	Upper	Lower	Compress	Extend	Travel		Rebound	Compress		
SPECIALTY SHOCK ABSORBERS — Continued										
40039	LS43	LS43	15.625	23.875	8.125				Yes	None
40040	LS43	LS43	16.875	25.625	8.250				Yes	None
40041	S1	SPEC	11.000	15.375	4.375				Yes	None
40042	LS43	LS43	15.250	22.750	7.500				Yes	None
40043	S1	SPEC	11.000	15.375	4.375				Yes	None
40044	S1	SPEC	11.000	15.375	4.375				Yes	None
40045	LS43	LS43	15.250	22.750	7.500				Yes	None
40200	LS77	LS77	11.625	17.875	6.125				Yes	P1137, P120
40201	LS77	LS77	11.625	17.875	6.125				Yes	None
40202	LS28	LS28	11.625	17.875	6.125				Yes	None
40209	LS43	LS43	14.875	22.875	8.000				Yes	None
40210	LS43	LS43	14.875	22.875	8.000				Yes	None
40211	S1	SPEC	18.250	24.375	6.125				Yes	None
SENSA-TRAC® LOAD ADJUSTING SHOCK ABSORBERS										
58241	L1/CP3	LS36	9.750	14.375	4.625				No	P19
58253	S4	LS38	10.500	16.125†	5.625				No	P1135
58263	S4	XP4	9.125	13.750†	4.625				No	P1134
58270	S4	XP4	8.750	13.000†	4.250				No	P1134
58273	S4	XP4	8.750	13.000†	4.250				No	P1134
58275	S4	LS38	9.250	14.000†	4.750				No	P1135
58411	XP7	L1/CP3	12.500	20.000†	7.500				No	P576
58417	L1	S4	11.375	18.125	6.750				No	P1137
58427	S4	LS7	14.250†	21.500	7.250				No	P1278
58484	L2	L2	14.125	23.125	9.000				No	None
58486	L1	L1	11.125	18.000	6.875				No	P101
58497	L1	L1	14.000	23.375	9.375				No	P829
58510	S4	L1/CP3	12.750	21.375	8.625				No	P577, P591
58518	S4	LS38	12.125	19.625	7.500				No	P1134
58523	XP7	LS47	14.500	22.750†	8.250				No	None
58527	LS37	LS37	11.625	19.000	7.375				No	None
58539	S4	S4	10.625	17.875	7.250				No	Two P1134
58552	LS41	LS37	11.125	18.000	6.875				No	None
58559	S4	LS38	13.625	22.750	9.125				No	P1135
58567	L1	L1	12.500	20.375	7.875				No	P573
58568	S4	L1/CP3	12.375	19.875†	7.500				No	P576, P1136
58571	LS39	L2	15.500	25.000†	9.500				No	None
58574	XP7	L1/CP3	13.375	21.250†	7.875				No	P576, P941
58575	LS37	LS37	9.375	14.500	5.125				No	None
58578	L1/CP5	LS47	14.000	22.875	8.875				No	P19
58591	L1	LS26	14.875	24.750	9.875				No	None
58592	L1	LS38	12.625	21.000	8.375				No	P570
58594	XP12	L1	12.750	20.000†	7.250				No	None
58595	LS39	LS39	13.000	20.875	7.875				No	P185
58598	LS74	LS74	14.625	22.125†	7.500				No	None
58600	XP7	LS47	16.125	26.750†	10.625				No	None
58601	L1	LS26	14.250	23.000	8.750				No	None
58602	L1	LS26	13.375	21.750	8.375				No	None
58604	L1	LS26	15.750	26.375	10.625				No	None
58605	S4	LS26	12.375	19.750†	7.375				No	P1135
58606	XP7	LS47	14.000	22.375†	8.375				No	None
58608	L1	LS26	14.250	23.000	8.750				No	P827
58609	XP7	LS47	15.375	25.250†	9.875				No	None
58610	LS47	LS47	15.250	24.625	9.375				No	None
58612	XP7	LS47	14.625	23.750†	9.125				No	None
58613	XP8	LS39	14.625	22.375	7.750				No	None
58614	XP8	LS39	15.625	25.125	9.500				No	None
58615	LS47	LS47	15.250	24.625	9.375				No	None
58616	LS28	LS26	11.875	18.125†	6.250				No	None
58617	XP7	LS26	15.500	25.125†	9.625				No	P941
58618	L1	LS26	15.750	26.125	10.375				No	P827
58619	L1	LS25	13.500	21.500†	8.000				No	P827

† Bumper Stop Unit. Dimensions shown at Bumper Contact.

‡ Hydraulic Lockout Unit. Dimension shown at Lockout Contact.

MOUNTING & LENGTH CHARTS

Unit No.	Mounting Code		Lengths			Reserve Tube	Controls		Dust Shield	Part Package
	Upper	Lower	Compress	Extend	Travel		Rebound	Compress		
SENSA-TRAC® LOAD ADJUSTING SHOCK ABSORBERS — Continued										
58620	LS28	LS28	11.250	17.000†	5.750				No	None
58624	LS27	LS26	10.625	15.750†	5.125				No	None
58625	S4	LS26	13.375	22.125	8.750				No	P1135
58627	L1	L1	14.250	22.500†	8.250				No	None
58628	S4	LS26	14.250	23.875	9.625				No	P1135
58629	S5	LS26	16.000	26.375†	10.375				No	P1167
58630	LS28	LS28	14.500	22.750†	8.250				No	None
58632	LS26	LS26	13.625	21.625†	8.000				No	None
58633	LS26	LS26	14.250	23.000†	8.750				No	None
58636	LS47	LS47	15.500	23.875†	8.375				No	None
58637	LS47	LS47	16.875	25.750†	8.875				No	None
58638	LSA7	LS47	16.000	25.875	9.875				No	None
58639	LS47	LS47	15.000	23.625	8.625				No	None
58640	LS47	LS47	15.750	26.500	10.750				No	None
58642	LS38	LS38	15.340	25.170	9.530				Yes	None
58643	LS38	LS38	16.590	27.550	10.660				Yes	None
GAS-MAGNUM® 65 SERIES SHOCK ABSORBERS										
65101	L3	L3	12.625	19.625	7.000	2.38	383	206	Yes	P119
65102	L4	L4	16.625	27.000	10.375	2.38	1011	242	Yes	None
65103	L4	L4	16.375	26.375	10.000	2.38	860	279	Yes	None
65104	L4	L4	14.000	21.875	7.875	2.38	658	219	Yes	None
65105	LS80	S6	14.000	22.875	8.875	2.38	989	427	Yes	P1071, P1231
65106	LS54	LS54	13.500	21.375	7.875	2.38	571	228	Yes	None
65107	S6	LS54	12.875	20.750	7.875	2.38	910	464	Yes	P1071, P1231
65108	LS54	LS54	14.500	23.375	8.875	2.38	1031	453	Yes	None
65109	LS54	LS54	14.000	22.500	8.500	2.38	540	251	Yes	None
65110	LS54	LS54	15.250	24.875	9.625	2.38	832	250	Yes	None
65111	L3	L3	17.000	28.375	11.375	2.38	617	245	Yes	P119
65112	L3	L3	15.125	24.750	9.625	2.38	640	251	Yes	P119
65113	L3	L3	13.250	20.875	7.625	2.38	385	199	Yes	P119
65114	L3	L3	16.125	26.625	10.500	2.38	681	204	Yes	P119
65115	S6	S6	13.125	21.625	8.500	2.38	1007	432	Yes	Two P1071, P1231
65116	L4	L4	15.375	24.250	8.875	2.38	1462	138	Yes	None
65118	L4	L4	16.500	26.375	9.875	2.38	1462	138	Yes	None
65119	LS54	LS54	13.125	20.375	7.250	2.38	2028	250	Yes	None
65120	LS54	LS54	16.125	26.500	10.375	2.38	1828	3102	Yes	None
65121	LS54	LS54	14.000	22.500	8.500	2.38	532	97	Yes	None
65122	L3	L3	18.750	32.000	13.250	2.38	774	132	Yes	P119
65123	L3	L3	14.875	24.250	9.375	2.38	626	131	Yes	P119
65124	LS67	LS69	15.500	24.500	9.000	2.38	860	279	Yes	None
65128	LS62	L3	16.125	25.500	9.375	2.38	881	428	Yes	P120, P1222
65129	S6	S6	10.875	15.625	4.750	2.38	1201	139	Yes	Two P1071, P1231
65130	LS53	LS53	15.250	24.875	9.625	2.38	1301	248	Yes	P1260
65133	S6	LS54	12.000	18.750	6.750	2.38	1039	420	Yes	P1071, P1231
65138	LS59	LS60	17.250	28.250	11.000	2.38	1530	370	Yes	None
65139	LS86	LS86	14.500	22.750	8.250	2.38	1316	262	Yes	None
65140	LS86	LS86	14.375	22.500	8.125	2.38	1091	317	Yes	None
65141	LS54	LS54	13.500	21.375	7.875	2.38	1438	192	Yes	None
65142	LS26	LS26	17.000	28.125	11.125	2.38	646	200	Yes	None
65143	LS53	LS53	13.250	20.250	7.000	2.38	708	211	Yes	None
65144	LS53	LS53	13.250	20.250	7.000	2.38	882	279	Yes	None
65145	LS53	LS53	13.250	20.250	7.000	2.38	1270	319	Yes	None
65146	LS53	LS53	16.375	23.375	7.000	2.38	708	168	Yes	None
65147	LS53	LS54	13.000	20.250	7.250	2.38	776	138	Yes	None
65148	LS86	LS86	14.625	22.750	8.125	2.38			Yes	None
65149	L5	L5	17.375	28.750	11.375				Yes	None
65150	LS53	LS53	16.230	26.010	9.780				No	None
65151	LS53	LS53	16.230	26.010	9.780				No	None
65153	S6	LS54	13.500	21.500	8.000				Yes	P1071, P1231
65154	S6	L5	17.875	29.250	11.375				Yes	P1071, P1231
65155	LS83	LS83	13.250	20.375	7.125				Yes	None

† Bumper Stop Unit. Dimensions shown at Bumper Contact.

‡ Hydraulic Lockout Unit. Dimension shown at Lockout Contact.

MOUNTING & LENGTH CHARTS

Unit No.	Mounting Code		Lengths			Reserve Tube	Controls		Dust Shield	Part Package
	Upper	Lower	Compress	Extend	Travel		Rebound	Compress		
GAS-MAGNUM® 65 SERIES SHOCK ABSORBERS — Continued										
65157	LS53	LS54	13.190	20.730	7.540				Yes	None
65158	LS53	LS54	13.190	20.730	7.540				Yes	None
65159	SPEC	L4	15.850	25.860	10.000				Yes	None
65160	LS53	S6	13.830	22.530	8.700				Yes	None
65400	S6	L4	17.375	26.750†	9.375	2.38	546	250	Yes	P1071, P1231
65401	LS54	LS54	17.875	29.000†	11.125	2.38	617	127	Yes	None
65402	S6	L4	15.000	23.500†	8.500	2.38	574	225	Yes	P1071, P1231
65404	S6	S6	12.000	18.250†	6.250	2.38	881	428	Yes	Two P1071, P1231
65405	L3	L3	13.125	19.500†	6.375	2.38	614	449	Yes	P119, P1009
65406	L3	L3	17.375	28.000†	10.625	2.38	1045	456	Yes	P119, P1009
65407	L4	L4	15.375	23.625†	8.250	2.38	1025	140	Yes	None
65408	S6	LS71	14.125	21.750†	7.625	2.38	856	453	Yes	P1071, P1231
65409	LS53	LS53	15.750	24.750†	9.000	2.38	273	117	Yes	None
65410	L4	L4	12.250	17.250†	5.000	2.38	1100	407	Yes	None
65411	LS54	LS54	16.375	26.000†	9.625	2.38	559	126	Yes	None
65412	LS54	LS54	15.750	24.625†	8.875	2.38	282	124	Yes	None
65413	S6	S6	14.625	23.375†	6.750				Yes	P1071, P1231
65414	S6	S6	14.625	23.375†	6.750				Yes	P1071, P1231
65415	L3	L3	16.875	26.750†	9.875	2.38	991	407	Yes	None
65416	LS54	LS54	12.000	17.250†	5.250	2.38	1045	407	Yes	None
65417	LS65	LS65	11.625	14.750†	3.125	2.38	881	117	Yes	None
65418	LS54	LS54	14.000	21.000†	7.000	2.38	991	117	Yes	None
65419	LS54	LS54	11.625	16.500†	4.875	2.38	991	127	Yes	None
65420	LS54	LS54	18.125	29.500†	11.375	2.38	559	117	Yes	None
65421	LS54	LS54	15.500	24.250†	8.750	2.38	1100	251	Yes	None
65422	L4	LS54	12.625	18.125†	5.500	2.38	1051	264	Yes	None
65423	LS54	L4	14.250	20.875†	6.625	2.38	1200	220	Yes	None
65424	LS54	L4	16.250	23.250†	7.000	2.38	1200	220	Yes	None
65425	S6	LS54	13.000	19.625†	6.625	2.38	616	84	Yes	P1071, P1231
65427	LS54	LS54	19.000	31.375†	12.375	2.38	559	126	Yes	None
65428	LS54	LS54	16.375	25.750†	9.375	2.38	938	213	Yes	None
65429	L3	L3	15.875	24.750†	8.875	2.38	881	83	Yes	P119
65430	L4	L4	13.375	19.375†	6.000	2.38	1284	292	Yes	None
65431	LS54	LS54	15.375	23.750†	8.375	2.38	647	266	Yes	None
65432	LS54	LS54	13.750	20.500†	6.750	2.38	559	126	Yes	None
65433	LS54	LS54	13.500	20.000†	6.500	2.38	1284	292	Yes	None
65434	L3	L3	13.625	20.250†	6.625	2.38	539	247	Yes	P119
65435	L4	L4	17.875	28.250†	10.375	2.38	1501	405	Yes	None
65436	S6	S6	11.375	16.875†	5.500	2.38	1099	376	Yes	Two P1071, P1231
65437	LS62	LS62	16.625	25.125†	8.500	2.38	953	105	Yes	P1220
65438	LS62	LS62	16.625	25.125†	8.500	2.38	1837	273	Yes	P1220
65439	L4	L4	15.125	21.500†	6.375	2.38	1208	132	Yes	None
65440	S6	L4	16.125	24.250†	8.125	2.38	1700	280	Yes	P1071, P1231
65441	L4	L4	18.750	28.125†	9.375	2.38	1224	189	Yes	None
65442	L4	L4	17.000	25.625†	8.625	2.38	938	161	Yes	None
65443	S6	S6	14.875	23.500†	8.625	2.38	1021	406	Yes	Two P1071, P1231
65444	S6	L4	15.000	23.250†	8.250	2.38	800	339	Yes	P1071, P1231
65445	S6	L4	18.750	30.125†	11.375	2.38	1074	192	Yes	P1071, P1231
65446	L4	L4	18.875	30.250†	11.375	2.38	1224	189	Yes	None
65447	S6	L4	18.625	29.000†	10.375	2.38	1304	188	Yes	Two P1071
65448	L4	L4	17.000	25.625†	8.625	2.38	1570	433	Yes	None
65449	L4	L4	15.750	22.875†	7.125	2.38	975	264	Yes	None
65451	LS54	LS54	13.375	19.750†	6.375	2.38	727	221	Yes	None
65452	L4	S6	15.125	23.125†	8.000	2.38	939	162	Yes	P1071, P1231
65453	LS54	LS54	17.000	27.000†	10.000	2.38	416	94	Yes	None
65454	LS68	LS68	15.500	23.750†	8.250	2.38	881	164	Yes	None
65455	L4	L4	14.375	21.375†	7.000	2.38	814	192	Yes	None
65456	L4	L4	20.250	32.875†	12.625	2.38	2323	348	Yes	None
65458	LS54	LS54	12.250	17.625†	5.375	2.38	1057	264	Yes	None
65459	LS54	LS54	17.375	27.875†	10.500	2.38	1271	199	Yes	None
65461	LS54	L4	12.875	18.500†	5.625	2.38	1051	264	Yes	None

† Bumper Stop Unit. Dimensions shown at Bumper Contact.
‡ Hydraulic Lockout Unit. Dimension shown at Lockout Contact.

MOUNTING & LENGTH CHARTS

Unit No.	Mounting Code		Lengths			Reserve Tube	Controls		Dust Shield	Part Package
	Upper	Lower	Compress	Extend	Travel		Rebound	Compress		
GAS-MAGNUM® 65 SERIES SHOCK ABSORBERS — Continued										
65462	LS54	L4	15.250	22.000†	6.750	2.38	826	118	Yes	None
65463	L4	L4	20.375	31.375†	11.000	2.38	681	204	Yes	None
65464	L4	L4	13.375	19.250†	5.875	2.38	757	184	Yes	None
65465	LS54	LS54	10.375	13.750†	3.375	2.38	1748	314	Yes	None
65466	L3	L3	15.750	24.625†	8.875	2.38	858	453	Yes	P119
65467	L4	L3	19.875	32.625†	12.750	2.38	522	80	Yes	P120
65468	S6	S6	15.625	25.500†	9.875	2.38	802	400	Yes	Two P1071, P1231
65469	S6	S6	13.125	20.500†	7.375	2.38	1023	181	Yes	Two P1071, P1231
65470	S6	S6	13.125	20.500†	7.375	2.38	901	167	Yes	Two P1071, P1231
65471	L4	L4	15.000	22.625†	7.625	2.38	417	56	Yes	None
65472	L4	S6	15.125	23.125†	8.000	2.38	873	162	Yes	P1071, P1231
65474	L4	L4	13.625	20.000†	6.375	2.38	1943	755	Yes	None
65475	LS53	S6	17.250	28.000†	10.750	2.38	854	202	Yes	P1071, P1231
65476	L4	L4	15.250	23.250†	8.000	2.38	768	404	Yes	None
65477	L4	L4	15.875	23.125†	7.250	2.38	1304	577	Yes	None
65478	LS54	LS54	15.000	23.250†	8.250	2.38	681	103	Yes	None
65479	LS54	LS54	15.750	24.625†	8.875	2.38	593	99	Yes	None
65480	LS54	S6	16.000	25.625†	9.625	2.38	593	99	Yes	P1071, P1231
65481	LS54	LS54	16.500	26.125†	9.625	2.38	681	103	Yes	None
65482	LS54	LS54	17.375	28.000†	10.625	2.38	681	103	Yes	None
65483	LS75	LS75	18.125	29.500†	11.375	2.38	583	99	Yes	None
65484	LS54	LS54	18.125	29.500†	11.375	2.38	593	99	Yes	None
65485	LS54	LS54	18.750	30.750†	12.000	2.38	593	99	Yes	None
65486	LS61	LS62	15.625	24.375†	8.750	2.38	560	263	Yes	None
65487	LS53	LS53	15.500	24.250†	8.750	2.38			Yes	None
65488	LS53	LS53	18.000	26.000†	8.000	2.38	1416	345	Yes	None
65489	LS59	LS60	13.500	19.500†	6.000	2.76	1473	348	Yes	None
65490	LS59	LS60	15.000	22.375†	7.375	2.76	1152	303	Yes	None
65491	LS87	LS61	12.125	17.750†	5.625	2.38			Yes	None
65492	LS87	LS61	14.500	21.875†	7.375	2.38			Yes	None
65493	LS54	LS54	12.125	17.125†	5.000	2.38	2378	860	Yes	None
65494	LS61	LS53	15.500	24.750†	9.250				Yes	P1343
65495	LS87	LS80	18.375	30.500†	12.125				Yes	None
65496	LS54	S6	23.250	14.500†	8.750				Yes	P1071, P1231
65497	LS83	LS83	13.250	18.875†	5.625				Yes	None
65498	LS53	LS54	18.625	25.375†	7.000				Yes	None
65499	LS53	LS54	18.625	25.375†	7.000				Yes	None
65500	LS54	LS54	11.875	17.500†	5.625				Yes	None
65501	LS54	LS54	11.875	17.500†	5.625				Yes	None
65502	LS54	LS54	10.990	15.750†	4.760				Yes	None
65504	LS87	LS54	15.170	24.120†	8.950				Yes	None
65505	LS54	LS54	17.400	28.530†	11.130				Yes	None
65506	LS54	LS54	15.740	25.210†	9.470				Yes	None
65507	LS62	S6	13.770	21.850†	8.080				Yes	None
65508	LS62	S6	14.790	23.920†	9.120				Yes	None
65509	LS54	LS54	9.130	12.060†	2.930				Yes	None
65510	LS54	LS54	9.730	13.240†	3.510				Yes	None
65511	LS54	LS54	10.340	14.470†	4.130				Yes	None
65512	LS54	LS54	11.060	15.910†	4.860				Yes	None
65513	LS54	LS54	12.960	19.500†	6.540				Yes	None
65514	LS54	LS54	16.190	25.920†	9.730				Yes	None
65515	LS54	LS54	17.180	27.940†	10.760				Yes	None
65516	LS54	LS54	17.820	29.200†	11.380				Yes	None
65517	LS61	LS75	17.230	27.980†	10.750				Yes	None
65518	LS61	LS62	16.510	25.980†	9.470				Yes	None
65519	LS54	LS54	13.290	20.060†	6.770				Yes	None
65520	N/A		17.430	26.620†	9.190					
65521	LS54	LS54	13.960	21.410	7.450				Yes	None
65522	LS53	LS53	17.400	28.590	11.190				Yes	None

† Bumper Stop Unit. Dimensions shown at Bumper Contact.

‡ Hydraulic Lockout Unit. Dimension shown at Lockout Contact.

MOUNTING & LENGTH CHARTS

Unit No.	Mounting Code		Lengths			Reserve Tube	Controls		Dust Shield	Part Package
	Upper	Lower	Compress	Extend	Travel		Rebound	Compress		
GAS-MAGNUM® 60 SERIES SHOCK ABSORBERS										
65156	LS71	LS54	15.530	25.340	9.810				No	None
65503	LS54	LS54	14.290	22.120†	7.830				Yes	None
66400	S4	L3	12.500	20.000	7.500	2.00	456	125	Yes	P120, P1135
66401	L4	S5	11.750	18.500	6.750	2.00	456	125	Yes	P1167
66402	LS54	LS53	15.625	25.125	9.500	2.00	477	181	Yes	None
66403	LS71	S6	12.875	20.875	8.000	2.00	420	130	Yes	P1071, P1231
66405	LS71	S6	11.875	18.875	7.000				Yes	None
66407	S6	LS54	14.000	22.250	8.250				Yes	P1071, P1231
66408	S6	LS71	14.125	21.750	7.625				Yes	None
66409	LS83	LS38	15.125	24.000	8.875				Yes	None
66412	LS53	LS53	11.670	18.120	6.450	2.00	420	130	No	None
66502	LS54	LS54	13.875	22.500	8.625	SPEC	604	335	Yes	None
66504	SPEC	SPEC	13.875	22.375	8.500	SPEC	604	335	Yes	None
66601	S4	LS82	13.500	22.875	9.375	1.75	541	70	Yes	P1134
66602	S4	L1	12.500	20.875	8.375	1.75	431	66	Yes	P1134
66603	S5	S5	12.250	20.125	7.875	2.00	737	131	Yes	Two P1167
66605	S5	S5	12.875	21.375	8.500	2.00	433	110	Yes	Two P1283, P1284
66606	LS53	LS53	17.000	27.250†	10.250	2.00	407	104	Yes	None
66607	LS54	LS54	9.875	13.000†	3.125	2.00	528	109	Yes	None
66609	LS54	S6	13.375	21.750	8.375	2.00	679	149	Yes	P1071, P1231
66610	LS54	LS54	12.500	18.250†	5.750	2.00	676	150	Yes	None
66613	LS54	LS54	16.875	27.000†	10.125	2.00	490	128	Yes	None
66615	LS71	S6	13.625	22.250	8.625	2.00	650	172	Yes	P1071, P1231
66618	L3	L3	13.375	21.500	8.125	2.00	680	280	Yes	P575
66624	L3	L3	15.500	25.625	10.125	2.00	440	119	Yes	None
66625	LS64	LS64	14.450	24.470	10.02	STR	703	199	Yes	None
66626	S6	S6	15.125	25.875	10.750	2.00	369	101	Yes	Two P1071, P1231
66627	LS54	LS54	10.375	14.000†	3.625	2.00	737	151	Yes	None
66628	S6	S6	16.875	29.500	12.625	2.00	369	101	Yes	Two P1071, P1231
66629	L3	L3	18.625	32.125	13.500	2.00	433	101	Yes	P119
66630	L3	L3	14.250	22.500†	8.250	2.00	632	151	Yes	P119
66631	L4	L4	16.000	25.375	9.375	2.00	433	242	Yes	None
66633	LS54	LS54	13.750	20.750†	7.000	2.00	407	149	Yes	None
66634	LS54	LS54	12.125	17.500†	5.375	2.00	528	144	Yes	None
66636	LS54	LS54	13.375	20.000†	6.625	2.00	812	204	Yes	None
66637	L1/CP5	LS54	14.125	23.000	8.875	2.00	545	145	Yes	P19
66638	LS54	LS54	16.500	26.375†	9.875	2.00	885	242	Yes	None
66639	S4	L1	13.250	22.000	8.750	2.00	310	210	Yes	P1134
66642	LS47	LS47	14.125	22.875	8.750	2.25	406	126	Yes	None
66646	L3	L3	15.250	25.000	9.750	2.00	1730	165	Yes	P119
66648	LS54	S6	13.625	20.875†	7.250	2.00	898	280	Yes	P1071, P1231
66653	S4	L3	14.000	23.250	9.250	2.00	368	154	Yes	P120, P1134
66656	LS54	S6	14.500	22.375†	7.875	2.00	475	92	Yes	P1071, P1231
66658	S6	LS54	14.875	23.500†	8.625	2.00	624	153	Yes	P1071, P1231
66660	LS54	L4	12.750	18.500†	5.750	2.00	752	135	Yes	None
66666	LS38	LS38	13.875	22.875	9.000	2.25	632	179	Yes	None
66667	LS38	LS38	12.250	19.750	7.500	2.25	310	170	Yes	None
66668	L3	L3	15.750	26.000	10.250	2.00	397	150	Yes	P119
66670	L3	L3	14.875	24.250	9.375	2.00	530	164	Yes	P119
66671	LS54	LS54	16.000	26.750	10.750	2.25	563	170	Yes	None
66672	LS54	LS54	17.625	30.000	12.375	2.00	626	145	Yes	None
66674	S5	L4	14.750	24.500	9.750	2.36	450	192	Yes	P1167
66675	S5	L3	13.375	22.000	8.625	2.00	589	184	Yes	P1167
66677	S4	LS82	13.875	23.375	9.500	2.00	476	199	Yes	P1134
66680	S5	LS53	16.375	27.250	10.875	2.00	631	208	Yes	P1283, P1284
66683	LS53	LS53	15.125	23.625†	8.500	2.00	442	163	Yes	None
66684	L4	L4	15.000	24.125	9.125	2.00	959	129	Yes	None
66687	LS71	S6	17.875	24.875	7.000	2.00	501	198	Yes	P1071, P1231
66691	LS41	LS53	15.000	24.000	9.000	2.00	318	174	Yes	None
66692	LS71	S6	13.750	22.625	8.875	2.00	419	117	Yes	P1071, P1231
66697	LS54	LS40	14.625	24.250	9.625	2.00	380	112	Yes	None

† Bumper Stop Unit. Dimensions shown at Bumper Contact.
‡ Hydraulic Lockout Unit. Dimension shown at Lockout Contact.

MOUNTING & LENGTH CHARTS

Unit No.	Mounting Code		Lengths			Reserve Tube	Controls		Dust Shield	Part Package
	Upper	Lower	Compress	Extend	Travel		Rebound	Compress		
GAS-MAGNUM® 60 SERIES SHOCK ABSORBERS — Continued										
66698	S5	LS53	14.000	23.375	9.375	2.26	257	45	Yes	P1303
66699	LS54	L4	13.500	19.875†	6.375	2.00	867	138	Yes	None
66702	LS82	LS50	14.000	22.500	8.500	2.00	1000	181	Yes	None
66703	LS55	LS55	14.250	22.750	8.500	2.00	612	150	Yes	None
66707	L4	L4	16.000	25.500	9.500	2.36	734	237	Yes	None
66708	LS53	LS53	16.250	26.750	10.500	2.00	616	160	Yes	None
66710	LS54	LS54	18.000	29.250†	11.250	2.00	670	175	Yes	None
66712	L4	L4	19.000	31.875	12.875	2.00	695	174	Yes	None
66713	S5	LS75	18.250	31.875	13.625	2.00	420	153	Yes	P1167
66714	L3	L3	14.375	23.375	9.000	2.00	397	150	Yes	P119, P936
66715	LS80	S6	14.125	23.125	9.000	2.00	745	129	Yes	P1071, P1231
66716	L4	L4	13.625	21.500	7.875	2.36	410	126	Yes	None
66717	S4	L3	14.250	23.375	9.125	2.00	701	134	Yes	P120, P936, P1134
66719	LS54	LS54	19.375	33.500	14.125	2.00	862	146	Yes	None
66801	S4	L1	11.875	19.250	7.375	2.25	584	137	Yes	P1134
66810	L2	L2	17.500	30.250	12.750	2.36	655	110	Yes	None
66811	L3	L3	16.125	26.500†	10.375	2.36	650	170	No	P119
66812	L2	L2	14.875	25.000	10.125	2.25	325	180	Yes	None
66828	L3	L3	13.125	21.125	8.000	2.36	537	205	Yes	P575
66829	S4	S4	11.500	18.750	7.250	2.00	843	136	Yes	Two P1130
66833	LS54	LS54	15.750	24.750†	9.000	2.00	676	150	Yes	None
66841	L3	L3	14.375	23.500	9.125	2.00	464	138	Yes	P575
66858	L2	L2	12.000	19.250	7.250	2.25	325	105	Yes	None
66859	L2	L2	16.125	27.125	11.000	2.00	547	138	Yes	None
66860	L3	L3	15.125	24.500†	9.375	2.36	370	145	Yes	P119
66861	L3	L3	17.250	28.625†	11.375	2.36	650	170	Yes	P119
66863	L3	L3	18.000	30.750	12.750	2.36	530	164	Yes	P119
66864	L4	L4	17.250	28.250	11.000	2.36	752	140	Yes	None
66878	LS54	LS54	14.625	23.875	9.250	2.00	855	295	Yes	None
66884	LS54	LS54	17.125	27.500†	10.375	2.00	815	136	Yes	None
66886	LS54	LS54	14.000	21.375†	7.375	2.00	812	204	Yes	None
66891	L4	L4	16.375	26.750	10.375	2.00	547	138	Yes	None
66893	LS54	LS54	11.875	17.000†	5.125	2.00	676	150	Yes	None
66894	LS54	LS54	17.875	29.250†	11.375	2.00	676	150	Yes	None
66897	LS54	LS54	15.250	23.875†	8.625	2.00	676	150	Yes	None
66898	LS54	LS54	17.625	28.375	10.750				Yes	None
66902	L1	L1	14.125	23.875	9.750	1.75	280	110	Yes	None
66903	S4	S4	12.750	21.750	9.000	1.75	347	131	Yes	Two P1134
66913	L1/CP5	LS54	15.000	24.875	9.875	2.00	545	145	Yes	P19
66921	S5	S5	13.500	23.625	10.125	2.25	686	142	Yes	Two P1283, P1284
66922	S5	LS53	14.875	25.625	10.750	2.25	672	148	Yes	P1283, P1284
66923	S5	S5	14.000	24.125	10.125	2.25	386	121	Yes	Two P1283, P1284
66924	S5	LS53	16.125	27.500	11.375	2.36	681	140	Yes	P1283, P1284
66956	LS53	LS53	15.750	24.875†	9.125	2.00	375	135	Yes	None
66957	L4	L4	15.250	23.250†	8.000	2.00	586	146	Yes	None
66965	LS53	LS53	18.625	30.500	11.875	2.00	825	171	Yes	None
66966	L4	S6	15.500	25.250	9.750	2.00	781	159	Yes	P1071, P1231
66969	LS54	LS54	15.375	24.125†	8.750	2.00	520	155	Yes	None
GAS-MAGNUM® CAB SHOCK ABSORBERS										
66101	LS80	LS80	7.375	9.750†	2.375	1.86			Yes	None
66103	LS14	LS72	7.625	9.250†	1.625	1.75	383	134	No	None
66104	LS14	LS14	7.250	9.375†	2.125	1.86	500	313	No	None
66105	LS39	LS41	7.875	10.875†	3.000	1.86	386	92	Yes	None
66106	LS14	LS14	8.375	11.625†	3.250	1.75	476	226	Yes	None
66107	LS45	LS88	7.625	9.250†	1.625				Yes	None
66108	LS89	LS44	8.375	10.250	1.875				Yes	None
66109	LS77	LS77	8.000	9.375†	1.375				Yes	None
66110	S4	S4	9.000	11.750†	2.750	1.86	225	64	No	Two P1135
66111	LS14	LS14	8.000	11.375	3.375	1.86	318	98	No	None
66112	LS76	LS76	8.250	11.000†	2.750	1.86	285	75	Yes	None
66113	LS30	S4	7.750	10.960	3.210				No	None

† Bumper Stop Unit. Dimensions shown at Bumper Contact.
‡ Hydraulic Lockout Unit. Dimension shown at Lockout Contact.

MOUNTING & LENGTH CHARTS

Unit No.	Mounting Code		Lengths			Reserve Tube	Controls		Dust Shield	Part Package
	Upper	Lower	Compress	Extend	Travel		Rebound	Compress		
GAS-MAGNUM® CAB SHOCK ABSORBERS — Continued										
66114	LS30	S4	8.220	11.380†	3.160				Yes	P1135
66115	LS29	S4	8.250	11.375†	3.125				Yes	P1135
66116	LS37	S4	7.730	10.400†	2.670	1.86	277	106	Yes	P1135
66117	LS37	S4	8.000	9.500†	1.500	1.86	342	109	Yes	P1135
66118	LS84	L1	7.625	10.625†	3.000				Yes	None
66120	LS23	LS23	6.500	8.500	2.000	1.86	213	103	Yes	None
66121	LS84	L1	9.030	11.820†	2.79				Yes	None
66122	LS84	L1	7.625	10.625†	3.000				Yes	None
66123	LS79	LS80	7.250	9.375†	2.125	1.86	383	133	No	None
66124	LS96	LS97	7.910	10.330†	2.420				Yes	None
66125	LS98	LS80	10.000	12.875†	2.875				Yes	None
66126	LS14	LS14	7.360	9.380	2.020				Yes	None
66143	L1	L1	11.750	18.500	6.750	1.86	337	269	No	Two P19
66145	LS80	LS80	9.170	13.120	3.950	1.86	472	106	Yes	None
66147	LS77	LS77	8.625	10.375†	1.750	1.86	515	257	Yes	None
66149	LS37	LS37	9.440	13.710†	4.270	1.86	472	101	Yes	None
66150	S4	XP4	9.500	11.500†	2.000	1.86	258	61	Yes	P1135
66151	LS37	LS37	7.780	10.080†	2.300	1.86	472	101	Yes	None
66152	L1	L1	7.875	11.250	3.375	1.86	472	101	Yes	None
66154	S4	S4	7.250	10.500†	3.250	1.86	368	75	Yes	Two P1135
66157	XP7	S4	7.125	9.750†	2.625	1.86	550	307	Yes	P1134
66159	LS24	LS24	8.500	11.500†	3.000	1.86	421	94	Yes	None
66160	LS77	LS77	7.625	9.875	2.250	2.00			Yes	None
66161	LS77	LS77	8.125	10.875	2.750	2.00			Yes	None
66162	LS73	LS73	6.375	7.875†	1.500	2.00			Yes	None
66178	LS14	LS72	6.625	8.375†	1.750	1.75	303	60	Yes	None
66179	XP7	XP7	6.125	7.875	1.750	1.75	634	275	Yes	None
66181	LS73	LS73	6.250	8.000†	1.750	1.86	601	132	No	None
66182	XP7	S4	5.750	7.375	1.625	1.86	421	190	Yes	P1098
66186	L1	S4	9.375	11.250†	1.875	1.86	402	134	Yes	P1134, P1221
66189	XP8	S4	8.750	10.875†	2.125	1.86	330	64	Yes	P1098
66193	LS8	LS8	7.375	9.750†	2.375	1.86	255	110	No	None
66195	LS4	LS4	10.500	14.000†	3.500	1.86	404	179	Yes	None
MONRO-MAGNUM® 70 SERIES SHOCK ABSORBERS										
74001	L4	L4	15.125	23.625	8.500	2.75	1125	150	Yes	None
74003	L4	L4	16.625	26.625	10.000	2.75	1220	205	Yes	None
74004	L4	L4	18.250	29.625	11.375	2.75	370	95	Yes	None
74006	L4	L4	14.250	21.625	7.375	2.75	755	100	Yes	None
74012	L4	L4	15.250	23.625	8.375	2.75	590	150	Yes	None
74025	L4	L4	15.500	24.375	8.875	2.75	1220	245	Yes	None
74028	L4	L4	14.625	22.625	8.000	2.75	1036	162	Yes	None
74029	L4	L4	15.875	25.250	9.375	2.75	1611	192	Yes	None
74069	L4	L4	19.625	32.375	12.750	2.75	965	340	Yes	None
74070	S6	S6	10.375	15.625	5.250	2.75	894	131	Yes	None
74073	L4	L4	16.350	26.180	9.830	2.75	996	257	No	None
74073	SPEC	SPEC	16.375	26.250	9.875	2.75	996	257	Yes	None
74074	S6	S6	16.375	27.625	11.250	2.75	1220	279	Yes	Four P1071
74075	L4	L4	13.250	19.875	6.625	2.75	1270	150	Yes	None
74076	S6	S6	14.625	23.875	9.250	2.75	1059	245	Yes	Four P1071
74077	S6	S6	13.875	22.375	8.500	2.75	589	95	Yes	Four P1071
74078	S6	S6	13.375	21.375	8.000	2.75	647	140	Yes	Four P1071
74079	S6	S6	12.375	19.750	7.375	2.75	754	129	Yes	Four P1071
74080	S6	LS54	13.125	20.875	7.750	2.75	2490	1007	Yes	Two P1071
74081	S6	S6	18.750	29.625	10.875	2.75	866	303	Yes	Two P1071, P1231
74400	L4	L4	16.875	25.750†	8.875	2.75	1665	330	Yes	None
74402	S6	L4	15.875	24.125‡	8.250	2.75	1500	215	Yes	None
74405	L4	L4	12.625	17.500‡	4.875	2.75	1060	150	Yes	None
74406	L4	L4	14.250	20.250‡	6.000	2.75	1160	245	Yes	None
74408	L4	L4	15.750	22.875‡	7.125	2.75	1200	170	Yes	None
74409	S6	S6	12.250	18.125‡	5.875	2.75	1063	129	Yes	Four P1071
74411	S6	L4	19.375	30.250‡	10.875	2.75	915	115	Yes	None

† Bumper Stop Unit. Dimensions shown at Bumper Contact.
‡ Hydraulic Lockout Unit. Dimension shown at Lockout Contact.

MOUNTING & LENGTH CHARTS

Unit No.	Mounting Code		Lengths			Reserve Tube	Controls		Dust Shield	Part Package
	Upper	Lower	Compress	Extend	Travel		Rebound	Compress		
MONRO-MAGNUM® 70 SERIES SHOCK ABSORBERS — Continued										
74412	L4	L4	18.375	28.250†	9.875	2.75	1385	120	Yes	None
74413	L4	L4	16.875	25.750†	8.875	2.75	770	135	Yes	None
74414	L4	S6	13.500	20.000‡	6.500	2.75	1152	303	Yes	None
74415	S6	S6	17.000	27.750†	10.750	2.75	694	253	Yes	None
74416	S6	S6	14.875	23.500†	8.625	2.00	866	499	Yes	Four P1071
74417	S6	L4	15.125	23.250†	8.125	2.75	714	313	Yes	None
74418	S6	S6	19.000	31.250†	12.250	2.75	648	157	Yes	None
74420	LS53	LS53	16.500	24.750†	8.250	2.75	370	140	Yes	None
74421	S6	S6	13.375	20.250†	6.875	2.75	951	453	Yes	Four P1071
74422	L4	S6	15.000	23.125†	8.125	2.75	979	119	Yes	None
74423	L4	L4	13.625	19.375†	5.750	2.75	1559	449	Yes	None
74424	L4	L4	16.250	25.000†	8.750	2.75	750	240	Yes	None
74425	LS59	LS60	15.000	22.125†	7.125	2.75	1152	303	Yes	None
74426	S6	LS54	13.375	20.000†	6.625	2.75	1150	400	Yes	Two P1071
74428	L4	L4	11.750	15.750†	4.000	2.75	979	117	Yes	None
74429	LS54	LS54	15.125	22.375†	7.250	2.75	1385	519	Yes	None
74430	LS81	S6	16.750	26.500†	9.750	2.75	502	122	Yes	P1071, P1231
74431	LS81	S6	18.750	30.500†	11.750	2.75	750	175	Yes	P1071, P1231
74432	LS81	S6	16.625	26.375†	9.750	2.75	1350	183	Yes	P1071, P1231
74433	LS59	LS60	13.500	19.250†	5.750	2.75	1152	303	Yes	None
74434	S6	SPEC	16.250	25.875†	9.625				Yes	P1231, P1071
74434	S6	L4	16.220	25.860†	9.640				No	None
74435	LS65	LS65	15.080	23.240†	8.160				Yes	None
74436	L4	L4	10.510	14.530†	4.020				No	None
74437	LS65	LS65	13.500	19.900†	19.490				Yes	None
74438	LS65	LS65	13.810	20.500	6.690				Yes	None
GAS-MAGNUM® SEVERE SERVICE SHOCK ABSORBERS										
550015	XP7	LS47	13.875	22.375†	8.500	2.00	424	126	Yes	None
550016	S4	XP4	12.625	20.375†	7.750	2.00	329	119	Yes	P1136
550017	XP12	L1	17.750	20.125†	2.375	2.00	253	80	Yes	None
550019	LS47	LS28	13.125	21.125	8.000	2.00			Yes	None
550020	LS48	LS43	12.625	20.250	7.625				Yes	None
550053	XP7	LS47	13.625	21.875†	8.250	SPEC	444	131	Yes	None
550054	XP12	L1	12.750	20.250†	7.500	SPEC	253	80	Yes	None
551001	LS54	LS54	17.000	28.250†	11.250	2.38	646	200	Yes	None
551002	LS54	LS54	15.750	24.625†	8.875	2.38	710	103	Yes	None
553002			14.375	21.375	7.000					None
GAS-MAGNUM® RV SHOCK ABSORBERS										
555001	S4	S4	7.875	11.875†	4.000	1.64	319	100	Yes	Two P1134
555002	L1	L1	8.625	12.750	4.125	1.75	259	95	Yes	P1221
555003	L1	L1	9.625	14.750	5.125	1.75	259	95	Yes	P1221
555004	L1	L1	11.250	17.875	6.625	1.75	259	95	Yes	P1221
555005	L1	L1	12.000	19.500	7.500	1.75	259	95	Yes	P1221
555006	L1	L1	13.375	22.250	8.875	1.75	259	95	Yes	P1221
555009	XP7	LS47	14.000	22.375†	8.375	SPEC	649	125	Yes	None
555010	S5	LS15	13.500	22.125	8.625	SPEC	571	170	Yes	P1167
555011	L2	LS39	14.625	24.125	9.500	2.00	395	156	Yes	None
555012	L2	L2	12.125	19.125	7.000	2.00	413	119	Yes	None
555013	L2	L2	16.000	27.000	11.000	2.00	395	156	Yes	None
555014	L1	LS39	15.000	23.375†	8.375	2.00	679	239	Yes	None
555015	L1	LS39	15.000	23.375†	8.375	2.00	630	161	Yes	None
555020	S5	LS38	13.500	22.500	9.000	SPEC	445	168	Yes	P1167
555025	S4	S4	8.625	13.500†	4.875	1.75	412	146	Yes	Two P1134
555026	LS54	LS54	14.000	21.250†	7.250	2.00	680	239	Yes	None
555027	LS54	LS54	14.000	21.250†	7.250	2.00	631	163	Yes	None
555028	LS54	LS54	15.000	23.250†	8.250	2.00	680	239	Yes	None
555029	LS54	LS54	15.000	23.250†	8.250	2.00	631	163	Yes	None
555031	S5	L1	10.000	14.875†	4.875	2.00	630	209	Yes	P1167
555032	S5	LS26	13.250	22.000	8.750	2.00	520	200	Yes	P1167
555033	S5	LS38	10.625	16.000†	5.375	2.00	605	175	No	P1167

† Bumper Stop Unit. Dimensions shown at Bumper Contact.

‡ Hydraulic Lockout Unit. Dimension shown at Lockout Contact.

MOUNTING & LENGTH CHARTS

Unit No.	Mounting Code		Lengths			Reserve Tube	Controls		Dust Shield	Part Package
	Upper	Lower	Compress	Extend	Travel		Rebound	Compress		
GAS-MAGNUM® RV SHOCK ABSORBERS — Continued										
555034	S5	LS38	13.625	22.500†	8.875	2.00	535	175	Yes	P1167
555035	LS37	LS37	9.875	14.875‡	5.000	2.00	798	196	Yes	None
555036	LS39	LS39	15.000	24.625†	9.625	2.00	430	140	Yes	None
555037	S5	XP8	10.125	15.625	5.500	2.00	836	206	No	P1167
555038	LS39	LS39	12.875	21.000	8.125	2.00	450	160	Yes	None
555039	S5	XP8	9.125	13.875	4.750	2.00	836	206	No	P1167
555041	LS78	LS78	14.125	22.875	8.750	2.00	404	106	Yes	None
555042	LS76	LS76	8.250	11.500	3.250	2.00	330	155	Yes	None
555043	S4	S4	12.500	20.875	8.375	2.00	390	132	Yes	Two P1134
555045	LS47	LS47	12.750†	16.125†	3.375	2.00	781	159	Yes	None
555046	L1	LS47	13.750†	19.250†	5.500	1.75	308	91	Yes	P19
557001	LS54	LS54	17.375	29.125	11.750	2.38	823	316	Yes	P1232
557002	LS54	LS54	16.875	27.625	10.750	2.38	765	223	No	None
557003	LS53	LS37	10.625	15.750	5.125	2.38	697	182	Yes	P1234
557004	LS47	LS47	14.000	22.000	8.000	2.38	663	116	Yes	None
557007	LS54	LS54	16.000	25.625	9.625	2.38	1099	250	No	None
557009	L4	L4	15.500	23.750‡	8.250	2.38	769	188	Yes	None
557010	LS54	LS54	15.375	23.750‡	8.375	2.38	682	258	Yes	None
557011	LS39	LS54	15.250	23.875‡	8.625	2.38	559	287	Yes	None
557012	LS54	LS54	13.625	20.500‡	6.875	2.38	502	186	Yes	None
557013	LS54	LS54	13.500	20.000‡	6.500	2.38	1242	389	Yes	None
557014	LS54	LS54	15.750	24.625‡	8.875	2.38	650	258	Yes	None
557015	LS54	LS54	17.875	29.000‡	11.125	2.38	696	145	Yes	None
557018	LS54	LS54	13.500	20.000‡	6.500	2.38	773	167	Yes	None
557020	LS54	LS54	16.500	26.250‡	9.750	2.38	828	307	Yes	None
557022	LS54	LS54	12.250	17.625‡	5.375	2.38	1059	282	Yes	None
557023	LS54	LS54	15.375	23.875‡	8.500	2.38	655	291	Yes	None
557026	LS54	LS54	13.625	20.500‡	6.875	2.38	665	241	Yes	None
557027	LS54	LS54	15.250	23.500‡	8.250	2.38	646	200	Yes	None
557028	LS54	LS54	16.875	27.000‡	10.125	2.38	851	284	Yes	None
557030	LS59	LS60	14.750	22.250‡	7.500	2.38			Yes	None
557031	LS54	LS54	16.375	27.000	10.625	2.38	1155	309	Yes	None
557032	LS54	S6	13.625	22.000	8.375	2.38	741	238	Yes	P1071, P1231
557033	S6	S6	11.250	16.500	5.250				Yes	P1071, P1231
557034	S5	LS39	14.500	22.875‡	8.375	2.38	1108	233	Yes	P1167
557035	S5	LS39	14.500	22.875‡	8.375	2.38	913	205	Yes	P1167
557036	LS59	LS60	16.750	27.000	10.250				Yes	None
557037	LS59	S6	13.625	21.500	7.875				Yes	P10171, P1231
557038	LS60	LS60	16.740	26.990	10.250				Yes	None
GAS-MAGNUM® RV STEERING STABILIZERS										
555944	S4	L1	13.750	23.375	9.625				Yes	P837, P1098
555949	L1	L1	17.125	29.375	12.250				Yes	Two P576
REFLEX™ TRUCK SHOCK ABSORBERS										
911011	S4	LS26	9.875	14.500†	4.625				Yes	P1135
911013	L1	LS26	14.250	23.000	8.750				Yes	P827
911014	L1	LS26	16.000	26.375	10.375				Yes	P827
911015	S4	L1	9.750	14.250†	4.500				Yes	P1135
911019	S4	XP4	9.000	13.250	4.250				No	P1134
911021	XP7	LS47	14.500	24.000	9.500				Yes	None
911022	S4	LS23	9.500	14.250	4.750				Yes	P1134
911024	S4	L1	13.375	22.000	8.625				Yes	P1134
911026	S4	XP4	12.875	20.375†	7.500				Yes	P1136
911027	XP12	L1	12.750	20.000†	7.250				Yes	None
911029	L1	L1	14.250	23.000	8.750				Yes	None
911030	S4	LS82	9.250	13.750	4.500				Yes	P1134
911032	L3	L3	13.750	21.500†	7.750				Yes	P575
911033	S4	L3	13.250	20.875†	7.625				Yes	P81, P1134
911034	S4	LS26	10.000	14.750†	4.750				Yes	P1135
911035	XP7	LS26	15.000	25.000	10.000				Yes	P941
911036	S4	L1	11.625	18.500	6.875				Yes	P1135

† Bumper Stop Unit. Dimensions shown at Bumper Contact.
‡ Hydraulic Lockout Unit. Dimension shown at Lockout Contact.

MOUNTING & LENGTH CHARTS

Unit No.	Mounting Code		Lengths			Reserve Tube	Controls		Dust Shield	Part Package
	Upper	Lower	Compress	Extend	Travel		Rebound	Compress		
REFLEX™ TRUCK SHOCK ABSORBERS — Continued										
911037	L1	LS26	13.500	21.750	8.250				Yes	None
911038	L1	LS26	14.875	24.750	9.875				Yes	None
911039	L1	LS26	15.750	26.375	10.625				Yes	None
911040	LS37	LS37	11.750	18.375	6.625				Yes	P816
911041	L1/CP5	LS47	14.000	22.875	8.875				Yes	P19
911042	LS40	LS40	13.250	21.000	7.750				Yes	None
911043	LS77	LS39	11.250	16.500†	5.250				Yes	None
911044	XP7	LS47	16.250	26.750†	10.500				Yes	None
911047	S4	LS23	8.125	12.125	4.000				Yes	P1137
911049	L1/CP5	LS36	10.000	14.625	4.625				Yes	P19
911050	S4	XP5	9.500	13.750†	4.250				No	P1134
911052	L1	LS26	14.250	23.000	8.750				Yes	None
911055	LS26	LS26	14.000	22.500†	8.500				Yes	None
911058	S4	XP4	8.500	12.375	3.875				No	P1134
911061	LS28	LS26	11.875	18.125†	6.250				Yes	None
911063	S4	XP5	9.250	13.875	4.625				No	P1134
911064	LS74	LS74	14.625	23.125†	8.500				Yes	None
911065	LS28	LS28	12.000	18.125	6.125				Yes	None
911071	S4	LS7	15.875†	20.750†	4.875				Yes	P1278
911073	L1	L1	13.000	20.750	7.750				Yes	None
911077	S4	LS23	8.750	13.375	4.625				Yes	P1134
911078	L1	L1	12.625	20.000	7.375				Yes	None
911080	S4	LS26	12.500	20.750†	8.250				Yes	P1135
911081	S4	XP4	13.000	20.750†	7.750				Yes	P1136
911082	L1	LS25	13.500	21.500†	8.000				Yes	None
911083	S4	XP4	13.250	21.125†	7.875				Yes	P1136
911085	XP7	LS47	14.000	22.375†	8.375				Yes	None
911086	XP7	LS47	14.750	23.750†	9.000				Yes	None
911087	XP7	LS47	15.500	25.250†	9.750				Yes	None
911090	LS37	LS37	9.750	14.750	5.000				Yes	None
911091	LS39	LS39	13.000	20.875	7.875				Yes	None
911096	S4	XP8	9.000	13.750	4.750				No	P1135
911099	LS39	LS39	11.500	16.625†	5.125				Yes	None
911102	S5	LS47	9.625	13.750†	4.125				Yes	P1167
911103	LS47	LS47	15.375	24.625	9.250				Yes	None
911104	S5	LS47	14.000	21.750‡	7.750				Yes	P1167
911108	S4	LS23	10.375	15.375	5.000				Yes	P1134
911109	LS78	L3	12.750	19.500†	6.750				Yes	P120
911110	LS27	LS26	10.750	15.750†	5.000				Yes	None
911122	S4	XP4	13.625	18.000†	4.375				Yes	P941, P1135
911123	LS28	LS28	11.250	17.000†	5.750				Yes	None
911128	S4	L1	9.750	14.250†	4.500				No	P1135, P1319
911129	S4	XP4	8.375	12.125	3.750				No	P1134
911131	S5	XP5	10.250	14.875†	4.625				Yes	P1167
911132	S4	LS26	14.250	23.875	9.625				Yes	P1135
911133	S4	LS39	10.000	14.375†	4.375				Yes	P1136
911134	S4	LS26	16.125	27.500	11.375				Yes	P1136
911135	XP12	LS37	12.625	19.625†	7.000				Yes	None
911137	S4	XP5	8.625	12.625	4.000				No	P1137
911138	LS28	LS28	14.500	22.750†	8.250				Yes	None
911140	LS28	LS28	15.250	24.625†	9.375				Yes	None
911144	LS26	LS26	13.625	21.750	8.125				Yes	None
911145	LS26	LS26	14.375	23.125	8.750				Yes	None
911147	S4	LS43	14.375	24.000	9.625				Yes	P1135
911148	S4	LS43	16.125	27.500	11.375				Yes	P1136
911149	S4	XP5	10.375	14.375†	4.000				Yes	P1135
911150	LS47	LS47	15.500	23.875†	8.375				Yes	None
911151	S4	SPEC	10.875	15.125†	4.250				Yes	P1135
911152	LS47	LS47	16.750	25.500†	8.750				Yes	None
911153	S4	XP5	9.500	13.500†	4.000				Yes	P1135
911156	LS26	LS26	13.000	20.250†	7.250				Yes	None

† Bumper Stop Unit. Dimensions shown at Bumper Contact.

‡ Hydraulic Lockout Unit. Dimension shown at Lockout Contact.

MOUNTING & LENGTH CHARTS

Unit No.	Mounting Code		Lengths			Reserve Tube	Controls		Dust Shield	Part Package
	Upper	Lower	Compress	Extend	Travel		Rebound	Compress		
REFLEX™ TRUCK SHOCK ABSORBERS — Continued										
911157	S4	L3	12.500	20.000†	7.500				Yes	P81, P1134
911158	LS52	LS30	14.625	23.250†	8.625				Yes	None
911161	S4	XP4	13.000	20.750†	7.750				Yes	P941, P1136
911162	LS29	LS25	13.750	21.750†	8.000				Yes	None
911163	S5	XP5	10.250	15.000†	4.750				Yes	P1167
911164	LS47	LS47	16.000	26.125†	10.125				Yes	None
911166	LS47	LS47	14.750	23.500†	8.750				Yes	None
911167	LS47	LS47	14.375	23.000†	8.625				Yes	None
911168	LS47	LS47	15.000	24.000†	9.000				Yes	None
911171	S4	LS23	8.000	11.875	3.875				Yes	P1137
911172	L1	L1	14.000	22.625	8.625				Yes	None
911173	S5	L1	10.250	15.000†	4.750				Yes	P1167
911174	XP7	LS26	15.250	25.125	9.875				Yes	None
911175	L1	LS26	13.750	21.875†	8.125				Yes	None
911176	XP7	LS26	16.750	28.250	11.500				Yes	None
911177	S4	XP4	11.625	18.000†	6.375				Yes	P941, P1135
911178	S4	SPEC	10.750	15.250†	4.500				Yes	P1135
911181	S5	LS42	10.250	15.125†	4.875				Yes	P1167
911183	S6	LS43	11.500	17.250†	5.750				Yes	P1071, P1231
911184	S5	LS54	14.375	23.125†	8.750				Yes	P1167, P1336
911186	S5	XP12	9.875	14.250†	4.375				Yes	P1167
911187	LS47	LS47	16.000	26.500	10.500				Yes	None
911188	S5	LS47	10.750	15.875†	5.125				Yes	P1167
911190	LS77	LS39	11.250	15.875†	4.625				Yes	None
911191	S5	LS47	9.625	13.750†	4.125				Yes	P1167
911192	LS47	LS47	15.750	26.125	10.375				Yes	None
911193	S5	LS47	14.250	22.250†	8.000				Yes	P1167
911194	L1	LS26	16.625	28.125	11.500				Yes	None
911195	L1	LS26	14.250	22.875†	8.625				Yes	None
911196	L1	LS26	18.250	31.000	12.750				Yes	None
911203	LS52	LS28	14.000	21.875†	7.875				Yes	None
911204	LS74	LS52	15.250	24.250†	9.000				Yes	None
911218	LS27	LS27	11.500	16.875	5.375				Yes	None
911219	S4	LS43	13.625†	15.000†	1.375				Yes	P1136
911220	S4	LS26	9.750	14.750	5.000				Yes	P1135
911221	S5	XP12	11.000	16.375†	5.375				Yes	P1167
911222	LS47	LS47	16.500	27.500	11.000				Yes	None
911223	S5	LS47	14.500	22.750†	8.250				Yes	P1167
911225	S4	LS23	8.750	13.375	4.625				Yes	P1134
911226	L1	LS82	13.375	20.750†	7.375				Yes	None
911228	XP7	LS47	13.375	21.000	7.625				Yes	None
911229	S4	LS21	10.000	14.500	4.500				Yes	P1134
911230	XP7	LS47	14.375	23.000	8.625				Yes	None
911238	S4	LS23	13.625	22.500	8.875				No	P1134
911239	S4	LS23	13.125	21.500	8.375				Yes	P1134
911240	S5	LS54	14.875	24.000†	9.125				Yes	P1167, P1336
911241	LS28	LS29	14.625	23.250	8.625				Yes	None
911242	LS28	LS29	14.625	22.375	7.750				Yes	None
911243	S4	L1	13.000	21.750	8.750				Yes	P1137
911245	S4	LS23	8.250	11.750	3.500				Yes	P1137
911246	LS27	LS27	11.500	17.000	5.500				Yes	None
911247	LS29	S3	13.250	21.250	8.000				Yes	None
911248	LS29	S3	12.125	19.000	6.875				Yes	None
911250	S4	LS91	14.125	22.625	8.500				Yes	P1134
911251	LS92	LS91	15.125	24.250	9.125				Yes	None
911252	LS92	LS91	14.500	23.000	8.500				Yes	None
911253	LS91	LS91	12.000	17.750	5.750				Yes	None
911255	S4	XP5	9.250	12.875	3.625				Yes	P1135
911256	S4	SPEC	10.875	15.125	4.250				Yes	P1136
911257	S4	XP5	9.875	14.125	4.250				Yes	P1135
911258	LS40	LS40	13.625	21.750	8.125				Yes	None

† Bumper Stop Unit. Dimensions shown at Bumper Contact.
‡ Hydraulic Lockout Unit. Dimension shown at Lockout Contact.

MOUNTING & LENGTH CHARTS

Unit No.	Mounting Code		Lengths			Reserve Tube	Controls		Dust Shield	Part Package
	Upper	Lower	Compress	Extend	Travel		Rebound	Compress		
REFLEX™ TRUCK SHOCK ABSORBERS — Continued										
911259	LS29	LS23	11.000	16.000	5.000				Yes	None
911260	LS29	LS74	15.250	24.000	8.750				Yes	None
911261	LS39	LS39	15.500	25.000	9.500				Yes	None
911262	LS39	LS39	16.500	27.250	10.750				Yes	None
911263	S4	LS43	14.000	20.875	6.875				Yes	P1136
911264	S4	LS43	15.000	23.375	8.375				Yes	P1136
911265	L1	LS26	16.250	27.000	10.750				Yes	None
911266	S5	LS47	13.625	20.750	7.125				Yes	P1167
911267	L1	LS26	17.625	29.625	12.000				Yes	None
911268	L1	LS26	18.500	31.375	12.875				Yes	None
911270	S5	LS54	14.000	22.250	8.250				Yes	P1167, P1336
911272	S4	LS 50	12.500	19.625	7.125				Yes	P1134
911273	LS49	LS47	13.375	21.000	7.625				Yes	None
911274	LS44	LS44	10.250	14.750	4.500				Yes	None
911275	LS49	LS47	12.375	19.500	7.125				Yes	None
911276	LS49	LS47	12.750	20.250	7.500				Yes	None
911277	LS28	LS28	14.750	24.000	9.250				Yes	None
911278	LS30	LS38	15.125	24.250	9.125				Yes	None
911279	S4	LS23	12.750	20.375	7.625				Yes	P1134
911280	S4	LS23	13.750	22.375	8.625				Yes	P1134
911281	LS40	LS40	12.625	19.500	6.875				Yes	None
911282	S5	LS29	11.000	15.375	4.375				Yes	None
REFLEX™ MONOTUBE SHOCK ABSORBERS										
911501	S4	SPEC	10.875	15.375	4.500				Yes	P1136
911502	LS47	LS47	16.750	25.625	8.875				Yes	None
911503	S4	XP5	10.250	14.625	4.375				Yes	P1136
911504	LS47	LS47	15.375	24.125	8.750				Yes	None
911505	S4	SPEC	10.875	15.375	4.500				Yes	P1136
911506	LS47	LS47	15.375	23.750	8.375				Yes	None
911507	S4	LS42	12.500	15.500	3.000				Yes	P1136
911508	LS43	LS43	17.750	27.250	9.500				Yes	None
911509	LS28	LS29	14.625	23.250	8.625				Yes	None
911510	LS28	LS29	14.625	22.375	7.750				Yes	None
911511	LS77	LS39	11.375	16.625	5.250				Yes	None
911512	XP7	LS47	16.000	25.625	9.625				Yes	None
911513	S4	XP5	9.625	14.000	4.375				No	P1136
911514	LS39	LS39	11.375	16.625	5.250				Yes	None
911515	XP2	LS39	16.000	25.250	9.250				Yes	None
911516	S4	XP4	9.000	13.375	4.375				No	P1136
911517	XP7	LS47	13.125	14.750	1.625				Yes	None
911518	S4	XP12	13.000	18.500	5.500				Yes	P1136
911519	LS79	LS26	16.000	25.500	9.500				Yes	None
911520	S4	LS39	10.000	14.500	4.500				Yes	P1136
911521	S4	LS26	16.250	26.500	10.250				Yes	P1137
911522	S4	XP1	13.250	20.500	7.250				Yes	P1138
911523	LS29	LS25	14.125	21.750	7.625				Yes	None
911524	S4	XP1	13.375	21.000	7.625				Yes	P11
911525	L1	LS25	13.875	21.500	7.625				Yes	None
911526	XP7	LS47	14.750	23.750	9.000				Yes	None
911527	S6	SPEC	11.125	15.375	4.250				Yes	P1136
911528	SPEC	LS47	15.375	24.000	8.625				Yes	None
911529	S4	LS23	8.125	12.125	4.000				Yes	P1137
911530	L1	L1	13.000	20.750	7.750				Yes	None
911533	LS43	LS43	15.830	24.800	8.980				Yes	None
911536	S4	LS26	14.020	21.930	7.910				Yes	None
911537	SPEC	LS26	14.690	21.340	6.650				Yes	None
911538	SPEC	LS26	14.690	22.560	7.870				Yes	None
911539	SPEC	LS27	14.760	23.150	8.390				Yes	None

† Bumper Stop Unit. Dimensions shown at Bumper Contact.

‡ Hydraulic Lockout Unit. Dimension shown at Lockout Contact.

MOUNTING & LENGTH CHARTS

Unit No.	Mounting Code		Lengths			Reserve Tube	Controls		Dust Shield	Part Package
	Upper	Lower	Compress	Extend	Travel		Rebound	Compress		
STEERING STABILIZERS										
SC2911	L1	L1	13.250	22.875	9.625	2.00	190	190	No	Two P1198
SC2912	S4	S4	12.625	21.875	9.250	1.86	190	190	No	Two P1098
SC2913	L1	L1	14.125	24.000	9.875	1.86	190	190	No	P837, P847
SC2914	L1	S4	12.750	21.500	8.750	1.86	130	130	No	P576, P1034, P1098
SC2915	L1	L1	12.125	19.875	7.750	1.86	130	130	No	Two P848
SC2916	L1	L1	13.250	22.250	9.000	1.86			No	Two P848
SC2917	L1	L1	11.625	18.750	7.125	1.86			No	Two P848
SC2922	LS14	L1	15.375	26.375	11.000	1.86	105	138	No	P837
SC2928	L1	LS37	12.000	19.500	7.500	2.00	190	190	No	P837
SC2936	LS2	LS23	15.000	21.000	6.000	1.86	190	190	No	None
SC2937	L1	LS4	12.000	19.500	7.500	2.00	190	190	No	P837, P848
SC2939	LS22	LS2	11.625	19.125	7.500	1.86	190	190	No	None
SC2940	S4	L1	10.625	17.375	6.750	1.86	190	190	No	P843, P1098
SC2941	LS23	LS22	11.500	17.625	6.125	1.86	130	130	No	None
SC2942	L1	LS4	12.250	20.125	7.875	1.86	130	130	No	P837
SC2945	SPEC	SPEC	14.000	23.000†	9.000	2.00	230	190	No	P837
SC2946	L1	L1	16.500	25.625	9.125	1.86	130	130	No	Two P1034
SC2947	LS2	L1	15.375	23.625	8.250	1.86	130	130	No	P1034
SC2948	LS2	L1	12.500	19.875	7.375	1.64			No	P1034
SC2951	L1	LS14	17.500	28.875	11.375	1.86	130	130	No	P837
SC2953	L1	LS24	13.750	23.000	9.250	1.86	130	130	No	P837
SC2954	L1	LS2	17.875	26.500	8.625	1.86	130	130	No	P1034
SC2955	LS26	LS26	13.000	21.375	8.375	1.86	130	130	No	None
SC2956	LS4	LS4	13.875	23.250	9.375	1.86			No	None
SC2957	L1	L1	17.000	26.875	9.875	1.86			No	Two P1034
SC2958	LS38	LS38	9.250	14.000	4.750	1.86	590	208	Yes	None
SC2960	LS24	LS24	13.625	22.625	9.000	1.86	261	251	No	None
SC2961	LS39	LS38	14.500	24.375	9.875	1.86	186	203	No	None
SC2962	LS5	LS24	12.750	20.750	8.000	1.86	117	133	No	P1326
SC2963	L1	LS35	12.500	20.625	8.125	1.86			No	P1368
SC2964	L1	LS24	14.000	23.500	9.500	1.86			No	P1368
SC2965	S4	L1	15.625	27.375	11.750				No	P1134

† Bumper Stop Unit. Dimensions shown at Bumper Contact.

‡ Hydraulic Lockout Unit. Dimension shown at Lockout Contact.

MOUNTING & LENGTH CHARTS

Mounting Code		Lengths			Reserve Tube	Unit No.	Controls		Dust Shield	Part Package
Upper	Lower	Compress	Extend	Travel			Rebound	Compress		
GAS-MAGNUM® SHOCK ABSORBERS										
L1	L1	11.875	18.125	6.250	2.00	34904			Yes	P411
L1	L1	12.625	19.750	7.125	2.00	34905			Yes	None
L1	L1	13.250	21.000	7.750	2.00	34803			Yes	P573
L1	L1	14.000	22.750	8.750	2.00	34802			Yes	P829
L1	L1	16.125	27.250	11.125	2.36	34791			Yes	None
L1	LS26	12.750	20.500	7.750	2.36	34731			Yes	None
L1	LS26	13.500	21.750	8.250	2.36	34927			Yes	None
L1	LS26	13.750	21.875†	8.125		34518			Yes	None
L1	LS26	14.000	22.250†	8.250	2.36	34797			Yes	None
L1	LS26	14.125	22.875	8.750	2.36	34963			Yes	None
L1	LS26	14.250	22.875†	8.625	2.25	34686			Yes	None
L1	LS26	14.875	24.750	9.875	2.36	34930			Yes	None
L1	LS26	15.750	26.375	10.625	2.36	34964			Yes	None
L1	LS26	16.500	28.250	11.750	2.25	34685			Yes	None
L1	LS26	18.000	31.000	13.000	2.36	34687			Yes	None
L1	LS38	14.250	22.875	8.625	2.36	34821			Yes	None
L1	S3	12.625	20.375	7.750	2.36	34958			Yes	P826
L1/CP1	LS54	14.125	23.000	8.875	2.00	34912			Yes	P19
L1/CP1	S3	9.875	14.625	4.750	2.36	34817			Yes	P19
L1/CP1	S3	10.375	16.000	5.625	2.36	34736			Yes	P19
L1/CP1	S4	14.000	22.875	8.875	2.36	34824			Yes	P19
L2	L2	13.250	21.125	7.875	2.36	34853			Yes	None
L3	L3	13.125	21.000	7.875	2.00	34828			Yes	P575
L3	S3	12.625	18.500†	5.875	2.00	34826			No	P120
LS26	L1	16.375	27.250	10.875	2.36	34733			Yes	None
LS26	LS26	13.625	21.625†	8.000	2.36	34671			Yes	None
LS26	LS26	14.000	20.125†	6.125	2.36	34681			Yes	None
LS26	LS26	14.000	22.500†	8.500	2.36	34732			Yes	None
LS26	LS26	14.250	23.000†	8.750	2.36	34672			Yes	None
LS27	LS27	13.375	21.000†	7.625	2.00	34971			Yes	None
LS37	LS37	11.750	18.375	6.625	2.36	34944			Yes	P816
LS39	LS39	13.000	20.875	7.875	2.00	34910			Yes	None
LS47	LS47	14.375	23.000†	8.625		34693			Yes	None
LS47	LS47	14.750	23.500†	8.750		34692			Yes	None
LS47	LS47	15.000	24.125†	9.125		34694			Yes	None
LS47	LS47	15.375	24.625	9.250	2.36	34777			Yes	None
LS47	LS47	15.500	23.750†	8.250	2.36	34676			Yes	None
LS47	LS47	15.750	26.125	10.375	2.36	34781			Yes	None
LS47	LS47	16.000	26.000†	10.000		34690			Yes	None
LS47	LS47	16.000	26.500	10.500		34515			Yes	None
LS47	LS47	16.500	27.500	11.000		34521			Yes	None
LS47	LS47	16.750	25.500†	8.750	2.36	34678			Yes	None
LS49	LS26	14.750	24.750	10.000		34524			Yes	None
LS77	S3	11.375	16.500†	5.125	2.00	34798			Yes	None
LS77	S3	11.750	15.875‡	4.125	2.00	34799			Yes	None
S3	L2	14.750	24.375	9.625	2.36	34832			Yes	None
S3	L2	15.625	26.250	10.625	2.36	34854			Yes	None
S3	L2	16.625	28.500†	11.875	2.36	34771			Yes	None
S3	S3	9.750	14.750	5.000	2.36	34839			Yes	None
S3	S3	11.625	18.250	6.625	2.36	34919			Yes	P816
S3	S3	13.875	22.750	8.875	2.36	34822			Yes	None
S3	S4	15.125	24.625†	9.500	2.00	34783			Yes	None
S4	L1	9.375	14.250†	4.875	2.00	34796			Yes	P1135
S4	L1	9.875	14.625†	4.750	2.00	34760			Yes	P1135
S4	L1	11.500	18.375	6.875	2.00	34926			Yes	P1135
S4	L1	11.500	19.125	7.625	1.86	34954			Yes	P1137
S4	L3	13.250	21.500	8.250	2.00	34959			Yes	P122, P1134
S4	L3	14.375	23.250†	8.875	2.36	34788			Yes	P120, P1135
S4	LS26	10.000	14.625†	4.625	2.00	34729			Yes	P1135
S4	LS26	10.125	15.000†	4.875	2.00	34793			Yes	P1135
S4	LS26	10.500	15.875†	5.375	2.00	34730			Yes	P1135

† Bumper Stop Unit. Dimensions shown at Bumper Contact.

‡ Hydraulic Lockout Unit. Dimension shown at Lockout Contact.

MOUNTING & LENGTH CHARTS

Mounting Code		Lengths			Reserve Tube	Unit No.	Controls		Dust Shield	Part Package
Upper	Lower	Compress	Extend	Travel			Rebound	Compress		
GAS-MAGNUM® SHOCK ABSORBERS — Continued										
S4	LS26	11.625	18.500	6.875	2.36	34928			Yes	P864, P1135
S4	LS26	12.500	19.875†	7.375	2.00	34759			Yes	P1135
S4	LS26	13.125	21.750	8.625	2.00	34761			Yes	P1135
S4	LS26	14.375	24.250	9.875	2.00	34656			Yes	P1135
S4	LS26	16.000	27.500	11.500	2.00	34658			Yes	P1135
S4	LS38	12.375	19.750	7.375	2.00	34911			Yes	P1136
S4	LS43	14.250	23.875	9.625	2.00	34673			Yes	P1135
S4	LS43	16.125	27.375	11.250	2.00	34674			Yes	P1135
S4	LS54	14.500	22.750†	8.250	2.00	34755			Yes	None
S4	S3	9.875	14.375†	4.500	2.00	34899			Yes	P1135
S4	S3	10.000	14.250†	4.250	2.00	34657			Yes	P1135
S4	S3	10.125	16.750†	6.625	2.36	34906			Yes	P1135
S4	S3	10.625	15.875†	5.250	2.00	34900			No	P1135
S4	S3	13.375	21.250†	7.875	2.36	34907			Yes	P1135
S4	S3	13.750	22.625	8.875	2.36	34901			Yes	P1135
S4	S4	10.375	14.500†	4.125	2.00	34970			No	P694
S4	S4	11.500	18.875†	7.375	1.64	34792			Yes	Two P1134
S4	S4	13.250	22.000†	8.750	2.36	34909			Yes	Two P1134
S4	S4	14.125	22.875	8.750	2.36	34960			Yes	None
S4	S4	14.750	24.625	9.875	2.36	34929			Yes	None
S4	S4	15.500	26.125	10.625	2.36	34920			Yes	None
S4	SPEC	10.875	15.250†	4.375		34501			Yes	P1135
S4	SPEC	11.000	15.125†	4.125	2.36	34677			Yes	P1135
S4	XP5	9.375	14.500	5.125	1.86	34953			Yes	P1134
S4	XP5	9.500	13.750†	4.250	2.36	34983			No	P1134
S4	XP5	9.625	14.000†	4.375	2.00	34741			No	P1134
S4	XP5	10.375	14.375†	4.000	2.00	34675			Yes	P1135
S4	XP8	8.875	13.375	4.500	2.00	34750			No	P1135
S4	XP8	8.875	13.375	4.500	2.00	34831			No	P1135
S4	XP8	9.250	13.625	4.375	2.00	34794			No	P1135
S4	XP8	10.000	15.500	5.500	2.00	34868			No	P1135
S5	L1	10.125	15.000†	4.875	2.00	34684			Yes	P1167
S5	LS37	10.375	15.125†	4.750		34504			Yes	P1167
S5	LS47	10.750	15.875†	5.125		34516			Yes	P1167
S5	LS47	13.625	20.750	7.125		34523			Yes	P1167
S5	LS47	14.500	22.750†	8.250		34522			Yes	P1167
S5	S4	9.500	13.750†	4.250	2.00	34776			Yes	P1167
S5	S4	13.875	21.750‡	7.875	2.02	34778			Yes	P1167
S5	S4	14.375	22.750‡	8.375	2.36	34782			Yes	P1167
S5	S5	14.250	23.250†	9.000	2.36	34787			Yes	Two P1167
S5	SP12	11.000	16.375†	5.375		34520			Yes	P1167
S5	XP5	10.250	14.875†	4.625	2.00	34655			Yes	P1167
S5	XP5	10.250	15.000†	4.750		34689			Yes	P1167
S5	XP10	9.875	14.250†	4.375		34514			Yes	P1167
XP5	S4	14.000	22.750†	8.750	2.36	34756			Yes	None
XP7	LS26	15.250	25.125	9.875		34517			Yes	None
XP7	LS26	16.750	28.250	11.500		34519			Yes	None
XP7	LS47	13.875	22.500†	8.625	2.36	34762			Yes	None
XP7	LS47	14.625	23.875†	9.250	2.36	34763			Yes	None
XP7	LS47	15.250	25.250†	10.000	2.36	34767			Yes	None
XP7	S4	16.125	26.750†	10.625	2.00	34985			Yes	None
SENSA-TRAC® TRUCK SHOCK ABSORBERS										
		15.880	26.180†	10.300		37284				None
L1	L1	11.750	18.250	6.500		37098			Yes	None
L1	L1	12.375	19.000†	6.625		37112			Yes	None
L1	L1	12.625	20.000	7.375		37078			Yes	None
L1	L1	13.000	20.750	7.750		37073			Yes	None
L1	L1	14.375	23.000	8.625		37029			Yes	None
L1	L1	15.125	24.875	9.750		37101			Yes	None
L1	LS25	13.625	21.500†	7.875		37082			Yes	None
L1	LS26	12.000	18.125†	6.125		37051			Yes	None

† Bumper Stop Unit. Dimensions shown at Bumper Contact.
‡ Hydraulic Lockout Unit. Dimension shown at Lockout Contact.

MOUNTING & LENGTH CHARTS

Mounting Code		Lengths			Reserve Tube	Unit No.	Controls		Dust Shield	Part Package
Upper	Lower	Compress	Extend	Travel			Rebound	Compress		
SENSA-TRAC® TRUCK SHOCK ABSORBERS — Continued										
L1	LS26	13.500	21.750	8.250		37037			Yes	None
L1	LS26	14.375	23.000	8.625		37013			Yes	P827
L1	LS26	14.375	23.000	8.625		37052			Yes	None
L1	LS26	15.000	24.750	9.750		37038			Yes	None
L1	LS26	15.875	26.375	10.500		37039			Yes	None
L1	LS26	16.000	26.375	10.375		37014			Yes	P827
L1	LS38	11.875	18.375	6.500		37121			Yes	None
L1	S4	12.125	19.250†	7.125		37074			Yes	P1137
L1/CP3	L1/CP3	14.000	23.625	9.625		37188			Yes	P572, P576
L1/CP5	LS36	10.000	14.625	4.625		37049			Yes	P19
L1/CP5	LS47	14.125	22.875	8.750		37041			Yes	P19
L2	L2	13.125	20.250†	7.125		37045			Yes	None
L2	L2	15.250	25.625	10.375		37189			Yes	None
L3	L3	12.875	19.500†	6.625		37114			Yes	P575
L3	L3	13.250	20.375†	7.125		37113			Yes	P575
L3	L3	13.875	21.500†	7.625		37032			Yes	P575
L3	LS27	14.625	23.500†	8.875		37017			Yes	P867
L3	LS43	13.625	21.250†	7.625		37075			Yes	P867
L3	LS43	14.875	23.625†	8.750		37076			Yes	P867
L3	S3	13.625	21.750	8.125		37192			Yes	P120, P171
LS3	LS3	11.250	17.375	6.125		37200			Yes	None
LS7	S3	10.125	15.625	5.500		37201			Yes	P591
LS26	LS26	12.750	20.250†	7.500		37156			Yes	None
LS26	LS26	13.750	21.750†	8.000		37144			Yes	None
LS26	LS26	14.000	22.500†	8.500		37055			Yes	None
LS26	LS26	14.125	20.125†	6.000		37154			Yes	None
LS26	LS26	14.375	23.125†	8.750		37145			Yes	None
LS26	LS26	14.875	21.250‡	6.375		37202			Yes	None
LS27	LS26	10.625	15.750†	5.125		37110			Yes	None
LS27	LS27	10.500	16.625†	6.125		37155			Yes	None
LS28	LS26	12.000	18.125†	6.125		37061			Yes	None
LS28	LS28	11.375	17.000†	5.625		37123			Yes	None
LS28	LS28	12.000	18.125†	6.125		37065			Yes	None
LS28	LS28	14.625	22.750†	8.125		37138			Yes	None
LS28	LS28	15.375	24.625†	9.250		37140			Yes	None
LS28	LS29	14.625	22.250†	7.625		37242			Yes	None
LS28	LS29	17.625	23.250†	5.625		37241			Yes	None
LS29	LS25	13.750	21.750†	8.000		37162			Yes	None
LS29	LS29	13.750	22.375†	8.625		37234			Yes	None
LS29	XP7	14.375	22.750†	8.375		37233			Yes	None
LS29	XP7	14.500	23.750†	9.250		37232			Yes	None
LS37	L1/CP5	9.375	14.250	4.875		37187			Yes	P19
LS37	LS37	10.000	14.750	4.750		37090			Yes	None
LS37	LS37	11.875	18.375	6.500		37040			Yes	P816
LS38	LS38	11.375	17.375	6.000		37218			Yes	None
LS39	L2	14.875	24.375	9.500		37094			Yes	None
LS39	L2	15.750	26.125	10.375		37046			Yes	None
LS39	LS39	11.500	16.875†	5.375		37246			Yes	None
LS39	LS39	11.625	16.500†	4.875		37099			Yes	None
LS39	LS39	13.125	20.875	7.750		37091			Yes	None
LS40	LS40	13.375	21.000	7.625		37042			Yes	None
LS47	LS47	14.625	23.500†	8.875		37166			Yes	None
LS47	LS47	15.500	24.625	9.125		37103			Yes	None
LS47	LS47	15.500	24.625	9.125		37105			Yes	None
LS47	LS47	15.625	23.750†	8.125		37150			Yes	None
LS47	LS47	16.000	26.000†	10.000		37164			Yes	None
LS47	LS47	16.000	26.500	10.500		37207			Yes	None
LS47	LS47	16.875	25.500†	8.625		37152			Yes	None
LS51	LS56	10.875	15.750†	4.875		37244			Yes	None
LS52	LS28	14.000	21.875†	7.875		37203			Yes	None
LS52	LS30	14.500	23.250†	8.750		37158			Yes	None

† Bumper Stop Unit. Dimensions shown at Bumper Contact.

‡ Hydraulic Lockout Unit. Dimension shown at Lockout Contact.

MOUNTING & LENGTH CHARTS

Mounting Code		Lengths			Reserve Tube	Unit No.	Controls		Dust Shield	Part Package
Upper	Lower	Compress	Extend	Travel			Rebound	Compress		
SENSA-TRAC® TRUCK SHOCK ABSORBERS — Continued										
LS55	S	13.625	22.000	8.375		37198			Yes	17110331
LS66	SPEC	14.000	22.000†	8.000		37249			Yes	None
LS74	LS52	15.125	24.250†	9.125		37204			Yes	None
LS74	LS74	14.750	23.125†	8.375		37064			Yes	None
LS77	LS39	11.250	16.500†	5.250		37062			Yes	None
LS77	LS39	11.750	16.000†	4.250		37130			Yes	None
LS78	L3	12.875	19.625†	6.750		37109			Yes	P120
S	S	12.875	21.500	8.625		37197			Yes	17110046
S1	LS40	15.875	23.375†	7.500		37146			No	None
S3	S3	13.000	21.625	8.625		37191			Yes	Two P171
S4	L1	9.375	14.250†	4.875		37128			Yes	P1135
S4	L1	9.750	14.500†	4.750		37015			Yes	P1135
S4	L1	10.000	15.500†	5.500		37018			Yes	P1135
S4	L1	10.250	14.875†	4.625		37116			Yes	P1135
S4	L1	11.625	18.375	6.750		37036			Yes	P1135
S4	L1	13.000	21.500	8.500		37243			Yes	P1137
S4	L1	13.375	21.875	8.500		37024			Yes	P1134
S4	L1	14.375	24.250†	9.875		37199			Yes	P1137
S4	L3	12.500	20.000†	7.500		37157			Yes	P81, P1134
S4	L3	13.250	20.875†	7.625		37033			Yes	P81, P1134
S4	LS7	15.875†	20.750†	4.875		37071			Yes	P1278
S4	LS22	13.000	21.250†	8.250		37231			Yes	P1134
S4	LS23	8.125	12.125	4.000		37047			Yes	P1137
S4	LS23	8.875	13.750	4.875		37077			Yes	P1134
S4	LS23	9.625	14.375	4.750		37022			Yes	P1134
S4	LS23	9.625	14.750	5.125		37100			Yes	P1134
S4	LS23	10.125	15.000†	4.875		37159			Yes	P1134
S4	LS23	10.375	15.250	4.875		37108			Yes	P1134
S4	LS23	10.500	16.375	5.875		37031			Yes	P1134
S4	LS23	13.125	21.500	8.375		37239			Yes	P1134
S4	LS23	13.625	22.500	8.875		37238			Yes	P1134
S4	LS26	9.750	14.750	5.000		37220			No	P1135
S4	LS26	9.875	14.500†	4.625		37011			Yes	P1135
S4	LS26	10.000	14.750†	4.750		37034			Yes	P1135
S4	LS26	10.000	15.500†	5.500		37012			Yes	P1135
S4	LS26	10.125	14.625†	4.500		37095			Yes	P1135
S4	LS26	10.250	15.000†	4.750		37118			Yes	P1135
S4	LS26	10.500	15.875†	5.375		37054			Yes	P1135
S4	LS26	11.000	16.250†	5.250		37012			Yes	P1135
S4	LS26	12.125	18.250†	6.125		37070			Yes	P1134
S4	LS26	12.375	19.750†	7.375		37269			Yes	P1134
S4	LS26	12.500	20.750†	8.250		37080			Yes	P1135
S4	LS26	13.500	22.000	8.500		37117			Yes	P1135
S4	LS26	14.250	23.875	9.625		37132			Yes	P1135
S4	LS26	16.000	27.500	11.500		37134			Yes	P1136
S4	LS27	9.000	13.000†	4.000		37016			Yes	P1135
S4	LS37	9.750	15.000	5.250		37068			No	P1135
S4	LS38	9.875	14.500†	4.625		37088			Yes	P1135
S4	LS38	10.750	15.875†	5.125		37053			Yes	P1135
S4	LS38	12.250	19.625	7.375		37089			Yes	P1134
S4	LS38	14.500	24.375	9.875		37120			Yes	P1135
S4	LS39	10.000	14.375†	4.375		37133			Yes	P1136
S4	LS43	14.250	23.875	9.625		37147			Yes	P1135
S4	LS43	16.125	27.375	11.250		37148			Yes	P1136
S4	LS51	15.250	25.125†	9.875		37217			Yes	P1137
S4	LS51	17.375†	23.500†	6.125		37237			Yes	P1136
S4	LS78	11.875	18.500†	6.625		37160			Yes	P1134
S4	LS82	9.250	13.625	4.375		37030			Yes	P1134
S4	S4	14.000	24.250	10.250		37186			Yes	Two P1134
S4	SPEC	10.750	15.375†	4.625		37178			Yes	P1135
S4	SPEC	11.000	15.125†	4.125		37151			Yes	P1135

† Bumper Stop Unit. Dimensions shown at Bumper Contact.
‡ Hydraulic Lockout Unit. Dimension shown at Lockout Contact.

MOUNTING & LENGTH CHARTS

Mounting Code		Lengths			Reserve Tube	Unit No.	Controls		Dust Shield	Part Package
Upper	Lower	Compress	Extend	Travel			Rebound	Compress		
SENSA-TRAC® TRUCK SHOCK ABSORBERS — Continued										
S4	XP1	8.750	13.375	4.625	37097			No		P1134
S4	XP2	8.625	13.000	4.375	37066			No		P1135
S4	XP4	8.375	12.250	3.875	37129			No		P1134
S4	XP4	8.500	12.375	3.875	37058			No		P1134
S4	XP4	8.875	13.250	4.375	37019			No		P1134
S4	XP4	11.625	18.000†	6.375	37177			Yes		P941, P1135
S4	XP4	12.875	20.375†	7.500	37026			Yes		P1136
S4	XP4	13.000	20.750†	7.750	37081			Yes		P1136
S4	XP4	13.000	20.750†	7.750	37161			Yes		P941, P1136
S4	XP4	13.250	21.125†	7.875	37083			Yes		P1136
S4	XP4	13.625	18.000†	4.375	37122			Yes		P941, P1135
S4	XP5	8.500	13.000	4.500	37137			No		P1135
S4	XP5	9.250	14.000	4.750	37063			No		P1134
S4	XP5	9.375	14.500	5.125	37072			Yes		P1134
S4	XP5	9.375	14.500	5.125	37111			No		P1134
S4	XP5	9.500	13.750†	4.250	37050			No		P1134
S4	XP5	9.500	13.750†	4.250	37125			No		P1134
S4	XP5	10.250	15.125†	4.875	37060			Yes		P1135
S4	XP5	10.375	14.375†	4.000	37149			Yes		P1135
S4	XP5	10.500	13.500†	3.000	37153			Yes		P1135
S4	XP8	8.875	13.250	4.375	37093			No		P1135
S4	XP8	8.875	13.375†	4.500	37096			No		P1135
S5	LS29	10.100	15.100†	4.400	37283			Yes		None
S5	LS42	10.250	15.125†	4.875	37181			Yes		P1167
S5	LS47	9.500	13.750†	4.250	37102			Yes		P1167
S5	LS47	10.750	15.875†	5.125	37208			Yes		P1167
S5	LS47	14.000	21.750‡	7.750	37104			Yes		P1167
S5	LS54	14.875	24.000†	9.125	37240			Yes		P1167, P1336
S5	XP5	10.250	14.875†	4.625	37131			Yes		P1167
S5	XP5	10.250	15.000†	4.750	37163			Yes		P1167
S5	XP12	9.875	14.250†	4.375	37206			Yes		P1167
SPEC	SPEC	8.375	11.375†	3.000	37195			Yes		17110284
SPEC	SPEC	8.875	12.375	3.500	37196			Yes		17110286
XP7	LS26	15.000	25.125	10.125	37035			Yes		P941
XP7	LS47	14.000	22.375†	8.375	37085			Yes		None
XP7	LS47	14.500	24.000	9.500	37021			Yes		None
XP7	LS47	14.625	23.750†	9.125	37086			Yes		None
XP7	LS47	15.375	25.250†	9.875	37087			Yes		None
XP7	LS47	16.125	26.750†	10.625	37044			Yes		None
XP8	LS39	14.625	23.500	8.875	37067			Yes		None
XP8	LS39	15.625	26.250	10.625	37069			Yes		None
XP9	LS38	10.625	15.750†	5.125	37190			No		None
XP12	L1	12.750	20.000†	7.250	37027			Yes		None
XP12	LS37	12.500	19.625†	7.125	37135			Yes		None
SENSA-TRAC® MONOTUBE SHOCK ABSORBERS										
S1	LS10	15.000	24.000	9.000	39052			No		17110495
S1	SPEC	14.513	18.060	3.547	39105			Yes		None
S2	SPEC	14.750	18.625	3.875	39051			No		None
SPECIALTY SHOCK ABSORBERS										
LS28	LS28	11.625	17.875	6.125	40202			Yes		None
LS43	LS43	14.875	22.875	8.000	40209			Yes		None
LS43	LS43	14.875	22.875	8.000	40210			Yes		None
LS43	LS43	15.000	22.500	7.500	40031			Yes		None
LS43	LS43	15.250	22.750	7.500	40032			Yes		None
LS43	LS43	15.250	22.750	7.500	40034			Yes		None
LS43	LS43	15.250	22.750	7.500	40042			Yes		None
LS43	LS43	15.250	22.750	7.500	40045			Yes		None
LS43	LS43	15.625	23.875	8.125	40036			Yes		None
LS43	LS43	15.625	23.875	8.125	40039			Yes		None
LS43	LS43	16.875	25.625	8.250	40040			Yes		None
LS77	LS77	11.625	17.875	6.125	40200			Yes		P1137, P120

† Bumper Stop Unit. Dimensions shown at Bumper Contact.

‡ Hydraulic Lockout Unit. Dimension shown at Lockout Contact.

MOUNTING & LENGTH CHARTS

Mounting Code		Lengths			Reserve Tube	Unit No.	Controls		Dust Shield	Part Package
Upper	Lower	Compress	Extend	Travel			Rebound	Compress		
SPECIALTY SHOCK ABSORBERS — Continued										
LS77	LS77	11.625	17.875	6.125		40201			Yes	None
S1	LS42	10.875	15.375	4.500		40035			Yes	None
S1	SPEC	11.000	15.375	4.375		40033			Yes	None
S1	SPEC	11.000	15.375	4.375		40038			Yes	None
S1	SPEC	11.000	15.375	4.375		40041			Yes	None
S1	SPEC	11.000	15.375	4.375		40043			Yes	None
S1	SPEC	11.000	15.375	4.375		40044			Yes	None
S1	SPEC	18.250	24.375	6.125		40211			Yes	None
S1	XP5	10.375	14.500	4.125		40037			Yes	None
S4	LS38	13.625	18.000	4.375		40004			Yes	None
S4	XP7	13.500	18.000	4.500		40005			Yes	None
XP7	LS26	15.000	24.000	9.000		40006			Yes	None
XP7	LS26	15.000	24.000	9.000		40007			Yes	None
SENSA-TRAC® LOAD ADJUSTING SHOCK ABSORBERS										
L1	L1	11.125	18.000	6.875		58486			No	P101
L1	L1	12.500	20.375	7.875		58567			No	P573
L1	L1	14.000	23.375	9.375		58497			No	P829
L1	L1	14.250	22.500†	8.250		58627			No	None
L1	LS25	13.500	21.500†	8.000		58619			No	P827
L1	LS26	13.375	21.750	8.375		58602			No	None
L1	LS26	14.250	23.000	8.750		58601			No	None
L1	LS26	14.250	23.000	8.750		58608			No	P827
L1	LS26	14.875	24.750	9.875		58591			No	None
L1	LS26	15.750	26.125	10.375		58618			No	P827
L1	LS26	15.750	26.375	10.625		58604			No	None
L1	LS38	12.625	21.000	8.375		58592			No	P570
L1	S4	11.375	18.125	6.750		58417			No	P1137
L1/CP3	LS36	9.750	14.375	4.625		58241			No	P19
L1/CP5	LS47	14.000	22.875	8.875		58578			No	P19
L2	L2	14.125	23.125	9.000		58484			No	None
LS26	LS26	13.625	21.625†	8.000		58632			No	None
LS26	LS26	14.250	23.000†	8.750		58633			No	None
LS27	LS26	10.625	15.750†	5.125		58624			No	None
LS28	LS26	11.875	18.125†	6.250		58616			No	None
LS28	LS28	11.250	17.000†	5.750		58620			No	None
LS28	LS28	14.500	22.750†	8.250		58630			No	None
LS37	LS37	9.375	14.500	5.125		58575			No	None
LS37	LS37	11.625	19.000	7.375		58527			No	None
LS38	LS38	15.340	25.170	9.530		58642			Yes	None
LS38	LS38	16.590	27.550	10.660		58643			Yes	None
LS39	L2	15.500	25.000†	9.500		58571			No	None
LS39	LS39	13.000	20.875	7.875		58595			No	P185
LS41	LS37	11.125	18.000	6.875		58552			No	None
LS47	LS47	15.000	23.625	8.625		58639			No	None
LS47	LS47	15.250	24.625	9.375		58610			No	None
LS47	LS47	15.250	24.625	9.375		58615			No	None
LS47	LS47	15.500	23.875†	8.375		58636			No	None
LS47	LS47	15.750	26.500	10.750		58640			No	None
LS47	LS47	16.875	25.750†	8.875		58637			No	None
LS74	LS74	14.625	22.125†	7.500		58598			No	None
LSA7	LS47	16.000	25.875	9.875		58638			No	None
S4	L1/CP3	12.375	19.875†	7.500		58568			No	P576, P1136
S4	L1/CP3	12.750	21.375	8.625		58510			No	P577, P591
S4	LS7	14.250†	21.500	7.250		58427			No	P1278
S4	LS26	12.375	19.750†	7.375		58605			No	P1135
S4	LS26	13.375	22.125	8.750		58625			No	P1135
S4	LS26	14.250	23.875	9.625		58628			No	P1135
S4	LS38	9.250	14.000†	4.750		58275			No	P1135
S4	LS38	10.500	16.125†	5.625		58253			No	P1135
S4	LS38	12.125	19.625	7.500		58518			No	P1134
S4	LS38	13.625	22.750	9.125		58559			No	P1135

† Bumper Stop Unit. Dimensions shown at Bumper Contact.
‡ Hydraulic Lockout Unit. Dimension shown at Lockout Contact.

MOUNTING & LENGTH CHARTS

Mounting Code		Lengths			Reserve Tube	Unit No.	Controls		Dust Shield	Part Package
Upper	Lower	Compress	Extend	Travel			Rebound	Compress		
SENSA-TRAC® LOAD ADJUSTING SHOCK ABSORBERS — Continued										
S4	S4	10.625	17.875	7.250		58539			No	Two P1134
S4	XP4	8.750	13.000†	4.250		58270			No	P1134
S4	XP4	8.750	13.000†	4.250		58273			No	P1134
S4	XP4	9.125	13.750†	4.625		58263			No	P1134
S5	LS26	16.000	26.375†	10.375		58629			No	P1167
XP7	L1/CP3	12.500	20.000†	7.500		58411			No	P576
XP7	L1/CP3	13.375	21.250†	7.875		58574			No	P576, P941
XP7	LS26	15.500	25.125†	9.625		58617			No	P941
XP7	LS47	14.000	22.375†	8.375		58606			No	None
XP7	LS47	14.500	22.750†	8.250		58523			No	None
XP7	LS47	14.625	23.750†	9.125		58612			No	None
XP7	LS47	15.375	25.250†	9.875		58609			No	None
XP7	LS47	16.125	26.750†	10.625		58600			No	None
XP8	LS39	14.625	22.375	7.750		58613			No	None
XP8	LS39	15.625	25.125	9.500		58614			No	None
XP12	L1	12.750	20.000†	7.250		58594			No	None
GAS-MAGNUM® 65 SERIES SHOCK ABSORBERS										
L3	L3	12.625	19.625	7.000	2.38	65101	383	206	Yes	P119
L3	L3	13.125	19.500‡	6.375	2.38	65405	614	449	Yes	P119, P1009
L3	L3	13.250	20.875	7.625	2.38	65113	385	199	Yes	P119
L3	L3	13.625	20.250‡	6.625	2.38	65434	539	247	Yes	P119
L3	L3	14.875	24.250	9.375	2.38	65123	626	131	Yes	P119
L3	L3	15.125	24.750	9.625	2.38	65112	640	251	Yes	P119
L3	L3	15.750	24.625‡	8.875	2.38	65466	858	453	Yes	P119
L3	L3	15.875	24.750‡	8.875	2.38	65429	881	83	Yes	P119
L3	L3	16.125	26.625	10.500	2.38	65114	681	204	Yes	P119
L3	L3	16.875	26.750‡	9.875	2.38	65415	991	407	Yes	None
L3	L3	17.000	28.375	11.375	2.38	65111	617	245	Yes	P119
L3	L3	17.375	28.000‡	10.625	2.38	65406	1045	456	Yes	P119, P1009
L3	L3	18.750	32.000	13.250	2.38	65122	774	132	Yes	P119
L4	L3	19.875	32.625‡	12.750	2.38	65467	522	80	Yes	P120
L4	L4	12.250	17.250‡	5.000	2.38	65410	1100	407	Yes	None
L4	L4	13.375	19.250‡	5.875	2.38	65464	757	184	Yes	None
L4	L4	13.375	19.375‡	6.000	2.38	65430	1284	292	Yes	None
L4	L4	13.625	20.000‡	6.375	2.38	65474	1943	755	Yes	None
L4	L4	14.000	21.875	7.875	2.38	65104	658	219	Yes	None
L4	L4	14.375	21.375‡	7.000	2.38	65455	814	192	Yes	None
L4	L4	15.000	22.625‡	7.625	2.38	65471	417	56	Yes	None
L4	L4	15.125	21.500‡	6.375	2.38	65439	1208	132	Yes	None
L4	L4	15.250	23.250‡	8.000	2.38	65476	768	404	Yes	None
L4	L4	15.375	23.625‡	8.250	2.38	65407	1025	140	Yes	None
L4	L4	15.375	24.250	8.875	2.38	65116	1462	138	Yes	None
L4	L4	15.750	22.875‡	7.125	2.38	65449	975	264	Yes	None
L4	L4	15.875	23.125‡	7.250	2.38	65477	1304	577	Yes	None
L4	L4	16.375	26.375	10.000	2.38	65103	860	279	Yes	None
L4	L4	16.500	26.375	9.875	2.38	65118	1462	138	Yes	None
L4	L4	16.625	27.000	10.375	2.38	65102	1011	242	Yes	None
L4	L4	17.000	25.625‡	8.625	2.38	65442	938	161	Yes	None
L4	L4	17.000	25.625‡	8.625	2.38	65448	1570	433	Yes	None
L4	L4	17.875	28.250‡	10.375	2.38	65435	1501	405	Yes	None
L4	L4	18.750	28.125‡	9.375	2.38	65441	1224	189	Yes	None
L4	L4	18.875	30.250‡	11.375	2.38	65446	1224	189	Yes	None
L4	L4	20.250	32.875‡	12.625	2.38	65456	2323	348	Yes	None
L4	L4	20.375	31.375‡	11.000	2.38	65463	681	204	Yes	None
L4	LS54	12.625	18.125‡	5.500	2.38	65422	1051	264	Yes	None
L4	S6	15.125	23.125‡	8.000	2.38	65452	939	162	Yes	P1071, P1231
L4	S6	15.125	23.125‡	8.000	2.38	65472	873	162	Yes	P1071, P1231
L5	L5	17.375	28.750	11.375		65149			Yes	None
LS26	LS26	17.000	28.125	11.125	2.38	65142	646	200	Yes	None
LS53	LS53	13.250	20.250	7.000	2.38	65143	708	211	Yes	None
LS53	LS53	13.250	20.250	7.000	2.38	65144	882	279	Yes	None

† Bumper Stop Unit. Dimensions shown at Bumper Contact.

‡ Hydraulic Lockout Unit. Dimension shown at Lockout Contact.

MOUNTING & LENGTH CHARTS

Mounting Code		Lengths			Reserve Tube	Unit No.	Controls		Dust Shield	Part Package
Upper	Lower	Compress	Extend	Travel			Rebound	Compress		
GAS-MAGNUM® 65 SERIES SHOCK ABSORBERS — Continued										
LS53	LS53	13.250	20.250	7.000	2.38	65145	1270	319	Yes	None
LS53	LS53	15.250	24.875	9.625	2.38	65130	1301	248	Yes	P1260
LS53	LS53	15.500	24.250†	8.750	2.38	65487			Yes	None
LS53	LS53	15.750	24.750†	9.000	2.38	65409	273	117	Yes	None
LS53	LS53	16.230	26.010	9.780		65150			No	None
LS53	LS53	16.230	26.010	9.780		65151			No	None
LS53	LS53	16.375	23.375	7.000	2.38	65146	708	168	Yes	None
LS53	LS53	17.400	28.590	11.190		65522			Yes	None
LS53	LS53	18.000	26.000†	8.000	2.38	65488	1416	345	Yes	None
LS53	LS54	13.000	20.250	7.250	2.38	65147	776	138	Yes	None
LS53	LS54	13.190	20.730	7.540		65157			Yes	None
LS53	LS54	13.190	20.730	7.540		65158			Yes	None
LS53	LS54	18.625	25.375†	7.000		65498			Yes	None
LS53	LS54	18.625	25.375†	7.000		65499			Yes	None
LS53	S6	13.830	22.530	8.700		65160			Yes	None
LS53	S6	17.250	28.000†	10.750	2.38	65475	854	202	Yes	P1071, P1231
LS54	L4	12.875	18.500†	5.625	2.38	65461	1051	264	Yes	None
LS54	L4	14.250	20.875†	6.625	2.38	65423	1200	220	Yes	None
LS54	L4	15.250	22.000†	6.750	2.38	65462	826	118	Yes	None
LS54	L4	16.250	23.250†	7.000	2.38	65424	1200	220	Yes	None
LS54	LS54	9.130	12.060†	2.930		65509			Yes	None
LS54	LS54	9.730	13.240†	3.510		65510			Yes	None
LS54	LS54	10.340	14.470†	4.130		65511			Yes	None
LS54	LS54	10.375	13.750†	3.375	2.38	65465	1748	314	Yes	None
LS54	LS54	10.990	15.750†	4.760		65502			Yes	None
LS54	LS54	11.060	15.910†	4.860		65512			Yes	None
LS54	LS54	11.625	16.500†	4.875	2.38	65419	991	127	Yes	None
LS54	LS54	11.875	17.500†	5.625		65500			Yes	None
LS54	LS54	11.875	17.500†	5.625		65501			Yes	None
LS54	LS54	12.000	17.250†	5.250	2.38	65416	1045	407	Yes	None
LS54	LS54	12.125	17.125†	5.000	2.38	65493	2378	860	Yes	None
LS54	LS54	12.250	17.625†	5.375	2.38	65458	1057	264	Yes	None
LS54	LS54	12.960	19.500†	6.540		65513			Yes	None
LS54	LS54	13.125	20.375	7.250	2.38	65119	2028	250	Yes	None
LS54	LS54	13.290	20.060†	6.770		65519			Yes	None
LS54	LS54	13.375	19.750†	6.375	2.38	65451	727	221	Yes	None
LS54	LS54	13.500	20.000†	6.500	2.38	65433	1284	292	Yes	None
LS54	LS54	13.500	21.375	7.875	2.38	65106	571	228	Yes	None
LS54	LS54	13.500	21.375	7.875	2.38	65141	1438	192	Yes	None
LS54	LS54	13.750	20.500†	6.750	2.38	65432	559	126	Yes	None
LS54	LS54	13.960	21.410	7.450		65521			Yes	None
LS54	LS54	14.000	21.000†	7.000	2.38	65418	991	117	Yes	None
LS54	LS54	14.000	22.500	8.500	2.38	65109	540	251	Yes	None
LS54	LS54	14.000	22.500	8.500	2.38	65121	532	97	Yes	None
LS54	LS54	14.500	23.375	8.875	2.38	65108	1031	453	Yes	None
LS54	LS54	15.000	23.250†	8.250	2.38	65478	681	103	Yes	None
LS54	LS54	15.250	24.875	9.625	2.38	65110	832	250	Yes	None
LS54	LS54	15.375	23.750†	8.375	2.38	65431	647	266	Yes	None
LS54	LS54	15.500	24.250†	8.750	2.38	65421	1100	251	Yes	None
LS54	LS54	15.740	25.210†	9.470		65506			Yes	None
LS54	LS54	15.750	24.625†	8.875	2.38	65412	282	124	Yes	None
LS54	LS54	15.750	24.625†	8.875	2.38	65479	593	99	Yes	None
LS54	LS54	16.125	26.500	10.375	2.38	65120	1828	3102	Yes	None
LS54	LS54	16.190	25.920†	9.730		65514			Yes	None
LS54	LS54	16.375	25.750†	9.375	2.38	65428	938	213	Yes	None
LS54	LS54	16.375	26.000†	9.625	2.38	65411	559	126	Yes	None
LS54	LS54	16.500	26.125†	9.625	2.38	65481	681	103	Yes	None
LS54	LS54	17.000	27.000†	10.000	2.38	65453	416	94	Yes	None
LS54	LS54	17.180	27.940†	10.760		65515			Yes	None
LS54	LS54	17.375	27.875†	10.500	2.38	65459	1271	199	Yes	None
LS54	LS54	17.375	28.000†	10.625	2.38	65482	681	103	Yes	None

† Bumper Stop Unit. Dimensions shown at Bumper Contact.
‡ Hydraulic Lockout Unit. Dimension shown at Lockout Contact.

MOUNTING & LENGTH CHARTS

Mounting Code		Lengths			Reserve Tube	Unit No.	Controls		Dust Shield	Part Package
Upper	Lower	Compress	Extend	Travel			Rebound	Compress		
GAS-MAGNUM® 65 SERIES SHOCK ABSORBERS — Continued										
LS54	LS54	17.400	28.530†	11.130		65505			Yes	None
LS54	LS54	17.820	29.200†	11.380		65516			Yes	None
LS54	LS54	17.875	29.000†	11.125	2.38	65401	617	127	Yes	None
LS54	LS54	18.125	29.500†	11.375	2.38	65420	559	117	Yes	None
LS54	LS54	18.125	29.500†	11.375	2.38	65484	593	99	Yes	None
LS54	LS54	18.750	30.750†	12.000	2.38	65485	593	99	Yes	None
LS54	LS54	19.000	31.375†	12.375	2.38	65427	559	126	Yes	None
LS54	S6	16.000	25.625†	9.625	2.38	65480	593	99	Yes	P1071, P1231
LS54	S6	23.250	14.500†	8.750		65496			Yes	P1071, P1231
LS59	LS60	13.500	19.500†	6.000	2.76	65489	1473	348	Yes	None
LS59	LS60	15.000	22.375†	7.375	2.76	65490	1152	303	Yes	None
LS59	LS60	17.250	28.250	11.000	2.38	65138	1530	370	Yes	None
LS61	LS53	15.500	24.750†	9.250		65494			Yes	P1343
LS61	LS62	15.625	24.375†	8.750	2.38	65486	560	263	Yes	None
LS61	LS62	16.510	25.980†	9.470		65518			Yes	None
LS61	LS75	17.230	27.980†	10.750		65517			Yes	None
LS62	L3	16.125	25.500	9.375	2.38	65128	881	428	Yes	P120, P1222
LS62	LS62	16.625	25.125†	8.500	2.38	65437	953	105	Yes	P1220
LS62	LS62	16.625	25.125†	8.500	2.38	65438	1837	273	Yes	P1220
LS62	S6	13.770	21.850†	8.080		65507			Yes	None
LS62	S6	14.790	23.920†	9.120		65508			Yes	None
LS65	LS65	11.625	14.750†	3.125	2.38	65417	881	117	Yes	None
LS67	LS69	15.500	24.500	9.000	2.38	65124	860	279	Yes	None
LS68	LS68	15.500	23.750†	8.250	2.38	65454	881	164	Yes	None
LS75	LS75	18.125	29.500†	11.375	2.38	65483	583	99	Yes	None
LS80	S6	14.000	22.875	8.875	2.38	65105	989	427	Yes	P1071, P1231
LS83	LS83	13.250	18.875†	5.625		65497			Yes	None
LS83	LS83	13.250	20.375	7.125		65155			Yes	None
LS86	LS86	14.375	22.500	8.125	2.38	65140	1091	317	Yes	None
LS86	LS86	14.500	22.750	8.250	2.38	65139	1316	262	Yes	None
LS86	LS86	14.625	22.750	8.125		65148			Yes	None
LS87	LS54	15.170	24.120†	8.950		65504			Yes	None
LS87	LS61	12.125	17.750†	5.625	2.38	65491			Yes	None
LS87	LS61	14.500	21.875†	7.375	2.38	65492			Yes	None
LS87	LS80	18.375	30.500†	12.125		65495			Yes	None
N/A		17.430	26.620†	9.190		65520				
S6	L4	15.000	23.250†	8.250	2.38	65444	800	339	Yes	P1071, P1231
S6	L4	15.000	23.500†	8.500	2.38	65402	574	225	Yes	P1071, P1231
S6	L4	16.125	24.250†	8.125	2.38	65440	1700	280	Yes	P1071, P1231
S6	L4	17.375	26.750†	9.375	2.38	65400	546	250	Yes	P1071, P1231
S6	L4	18.625	29.000†	10.375	2.38	65447	1304	188	Yes	Two P1071
S6	L4	18.750	30.125†	11.375	2.38	65445	1074	192	Yes	P1071, P1231
S6	L5	17.875	29.250	11.375		65154			Yes	P1071, P1231
S6	LS54	12.000	18.750	6.750	2.38	65133	1039	420	Yes	P1071, P1231
S6	LS54	12.875	20.750	7.875	2.38	65107	910	464	Yes	P1071, P1231
S6	LS54	13.000	19.625†	6.625	2.38	65425	616	84	Yes	P1071, P1231
S6	LS54	13.500	21.500	8.000		65153			Yes	P1071, P1231
S6	LS71	14.125	21.750†	7.625	2.38	65408	856	453	Yes	P1071, P1231
S6	S6	10.875	15.625	4.750	2.38	65129	1201	139	Yes	Two P1071, P1231
S6	S6	11.375	16.875†	5.500	2.38	65436	1099	376	Yes	Two P1071, P1231
S6	S6	12.000	18.250†	6.250	2.38	65404	881	428	Yes	Two P1071, P1231
S6	S6	13.125	20.500†	7.375	2.38	65469	1023	181	Yes	Two P1071, P1231
S6	S6	13.125	20.500†	7.375	2.38	65470	901	167	Yes	Two P1071, P1231
S6	S6	13.125	21.625	8.500	2.38	65115	1007	432	Yes	Two P1071, P1231
S6	S6	14.625	23.375†	6.750		65413			Yes	P1071, P1231
S6	S6	14.625	23.375†	6.750		65414			Yes	P1071, P1231
S6	S6	14.875	23.500†	8.625	2.38	65443	1021	406	Yes	Two P1071, P1231
S6	S6	15.625	25.500†	9.875	2.38	65468	802	400	Yes	Two P1071, P1231
SPEC	L4	15.850	25.860	10.000		65159			Yes	None

† Bumper Stop Unit. Dimensions shown at Bumper Contact.

‡ Hydraulic Lockout Unit. Dimension shown at Lockout Contact.

MOUNTING & LENGTH CHARTS

Mounting Code		Lengths			Reserve Tube	Unit No.	Controls		Dust Shield	Part Package
Upper	Lower	Compress	Extend	Travel			Rebound	Compress		
GAS-MAGNUM® 60 SERIES SHOCK ABSORBERS										
L1	L1	14.125	23.875	9.750	1.75	66902	280	110	Yes	None
L1/CP5	LS54	14.125	23.000	8.875	2.00	66637	545	145	Yes	P19
L1/CP5	LS54	15.000	24.875	9.875	2.00	66913	545	145	Yes	P19
L2	L2	12.000	19.250	7.250	2.25	66858	325	105	Yes	None
L2	L2	14.875	25.000	10.125	2.25	66812	325	180	Yes	None
L2	L2	16.125	27.125	11.000	2.00	66859	547	138	Yes	None
L2	L2	17.500	30.250	12.750	2.36	66810	655	110	Yes	None
L3	L3	13.125	21.125	8.000	2.36	66828	537	205	Yes	P575
L3	L3	13.375	21.500	8.125	2.00	66618	680	280	Yes	P575
L3	L3	14.250	22.500†	8.250	2.00	66630	632	151	Yes	P119
L3	L3	14.375	23.375	9.000	2.00	66714	397	150	Yes	P119, P936
L3	L3	14.375	23.500	9.125	2.00	66841	464	138	Yes	P575
L3	L3	14.875	24.250	9.375	2.00	66670	530	164	Yes	P119
L3	L3	15.125	24.500†	9.375	2.36	66860	370	145	Yes	P119
L3	L3	15.250	25.000	9.750	2.00	66646	1730	165	Yes	P119
L3	L3	15.500	25.625	10.125	2.00	66624	440	119	Yes	None
L3	L3	15.750	26.000	10.250	2.00	66668	397	150	Yes	P119
L3	L3	16.125	26.500†	10.375	2.36	66811	650	170	No	P119
L3	L3	17.250	28.625†	11.375	2.36	66861	650	170	Yes	P119
L3	L3	18.000	30.750	12.750	2.36	66863	530	164	Yes	P119
L3	L3	18.625	32.125	13.500	2.00	66629	433	101	Yes	P119
L4	L4	13.625	21.500	7.875	2.36	66716	410	126	Yes	None
L4	L4	15.000	24.125	9.125	2.00	66684	959	129	Yes	None
L4	L4	15.250	23.250‡	8.000	2.00	66957	586	146	Yes	None
L4	L4	16.000	25.375	9.375	2.00	66631	433	242	Yes	None
L4	L4	16.000	25.500	9.500	2.36	66707	734	237	Yes	None
L4	L4	16.375	26.750	10.375	2.00	66891	547	138	Yes	None
L4	L4	17.250	28.250	11.000	2.36	66864	752	140	Yes	None
L4	L4	19.000	31.875	12.875	2.00	66712	695	174	Yes	None
L4	S5	11.750	18.500	6.750	2.00	66401	456	125	Yes	P1167
L4	S6	15.500	25.250	9.750	2.00	66966	781	159	Yes	P1071, P1231
LS38	LS38	12.250	19.750	7.500	2.25	66667	310	170	Yes	None
LS38	LS38	13.875	22.875	9.000	2.25	66666	632	179	Yes	None
LS41	LS53	15.000	24.000	9.000	2.00	66691	318	174	Yes	None
LS47	LS47	14.125	22.875	8.750	2.25	66642	406	126	Yes	None
LS53	LS53	11.670	18.120	6.450	2.00	66412	420	130	No	None
LS53	LS53	15.125	23.625‡	8.500	2.00	66683	442	163	Yes	None
LS53	LS53	15.750	24.875‡	9.125	2.00	66956	375	135	Yes	None
LS53	LS53	16.250	26.750	10.500	2.00	66708	616	160	Yes	None
LS53	LS53	17.000	27.250‡	10.250	2.00	66606	407	104	Yes	None
LS53	LS53	18.625	30.500	11.875	2.00	66965	825	171	Yes	None
LS54	L4	12.750	18.500‡	5.750	2.00	66660	752	135	Yes	None
LS54	L4	13.500	19.875‡	6.375	2.00	66699	867	138	Yes	None
LS54	LS40	14.625	24.250	9.625	2.00	66697	380	112	Yes	None
LS54	LS53	15.625	25.125	9.500	2.00	66402	477	181	Yes	None
LS54	LS54	9.875	13.000‡	3.125	2.00	66607	528	109	Yes	None
LS54	LS54	10.375	14.000‡	3.625	2.00	66627	737	151	Yes	None
LS54	LS54	11.875	17.000‡	5.125	2.00	66893	676	150	Yes	None
LS54	LS54	12.125	17.500‡	5.375	2.00	66634	528	144	Yes	None
LS54	LS54	12.500	18.250‡	5.750	2.00	66610	676	150	Yes	None
LS54	LS54	13.375	20.000‡	6.625	2.00	66636	812	204	Yes	None
LS54	LS54	13.750	20.750‡	7.000	2.00	66633	407	149	Yes	None
LS54	LS54	13.875	22.500	8.625	SPEC	66502	604	335	Yes	None
LS54	LS54	14.000	21.375‡	7.375	2.00	66886	812	204	Yes	None
LS54	LS54	14.290	22.120‡	7.830		65503			Yes	None
LS54	LS54	14.625	23.875	9.250	2.00	66878	855	295	Yes	None
LS54	LS54	15.250	23.875‡	8.625	2.00	66897	676	150	Yes	None
LS54	LS54	15.375	24.125‡	8.750	2.00	66969	520	155	Yes	None
LS54	LS54	15.750	24.750‡	9.000	2.00	66833	676	150	Yes	None
LS54	LS54	16.000	26.750	10.750	2.25	66671	563	170	Yes	None
LS54	LS54	16.500	26.375‡	9.875	2.00	66638	885	242	Yes	None

† Bumper Stop Unit. Dimensions shown at Bumper Contact.
‡ Hydraulic Lockout Unit. Dimension shown at Lockout Contact.

MOUNTING & LENGTH CHARTS

Mounting Code		Lengths			Reserve Tube	Unit No.	Controls		Dust Shield	Part Package
Upper	Lower	Compress	Extend	Travel			Rebound	Compress		
GAS-MAGNUM® 60 SERIES SHOCK ABSORBERS — Continued										
LS54	LS54	16.875	27.000†	10.125	2.00	66613	490	128	Yes	None
LS54	LS54	17.125	27.500†	10.375	2.00	66884	815	136	Yes	None
LS54	LS54	17.625	28.375	10.750		66898			Yes	None
LS54	LS54	17.625	30.000	12.375	2.00	66672	626	145	Yes	None
LS54	LS54	17.875	29.250†	11.375	2.00	66894	676	150	Yes	None
LS54	LS54	18.000	29.250†	11.250	2.00	66710	670	175	Yes	None
LS54	LS54	19.375	33.500	14.125	2.00	66719	862	146	Yes	None
LS54	S6	13.375	21.750	8.375	2.00	66609	679	149	Yes	P1071, P1231
LS54	S6	13.625	20.875†	7.250	2.00	66648	898	280	Yes	P1071, P1231
LS54	S6	14.500	22.375†	7.875	2.00	66656	475	92	Yes	P1071, P1231
LS55	LS55	14.250	22.750	8.500	2.00	66703	612	150	Yes	None
LS64	LS64	14.450	24.470	10.02	STR	66625	703	199	Yes	None
LS71	LS54	15.530	25.340	9.810		65156			No	None
LS71	S6	11.875	18.875	7.000		66405			Yes	None
LS71	S6	12.875	20.875	8.000	2.00	66403	420	130	Yes	P1071, P1231
LS71	S6	13.625	22.250	8.625	2.00	66615	650	172	Yes	P1071, P1231
LS71	S6	13.750	22.625	8.875	2.00	66692	419	117	Yes	P1071, P1231
LS71	S6	17.875	24.875	7.000	2.00	66687	501	198	Yes	P1071, P1231
LS80	S6	14.125	23.125	9.000	2.00	66715	745	129	Yes	P1071, P1231
LS82	LS50	14.000	22.500	8.500	2.00	66702	1000	181	Yes	None
LS83	LS38	15.125	24.000	8.875		66409			Yes	None
S4	L1	11.875	19.250	7.375	2.25	66801	584	137	Yes	P1134
S4	L1	12.500	20.875	8.375	1.75	66602	431	66	Yes	P1134
S4	L1	13.250	22.000	8.750	2.00	66639	310	210	Yes	P1134
S4	L3	12.500	20.000	7.500	2.00	66400	456	125	Yes	P120, P1135
S4	L3	14.000	23.250	9.250	2.00	66653	368	154	Yes	P120, P1134
S4	L3	14.250	23.375	9.125	2.00	66717	701	134	Yes	P120, P936, P1134
S4	LS82	13.500	22.875	9.375	1.75	66601	541	70	Yes	P1134
S4	LS82	13.875	23.375	9.500	2.00	66677	476	199	Yes	P1134
S4	S4	11.500	18.750	7.250	2.00	66829	843	136	Yes	Two P1130
S4	S4	12.750	21.750	9.000	1.75	66903	347	131	Yes	Two P1134
S5	L3	13.375	22.000	8.625	2.00	66675	589	184	Yes	P1167
S5	L4	14.750	24.500	9.750	2.36	66674	450	192	Yes	P1167
S5	LS53	14.000	23.375	9.375	2.26	66698	257	45	Yes	P1303
S5	LS53	14.875	25.625	10.750	2.25	66922	672	148	Yes	P1283, P1284
S5	LS53	16.125	27.500	11.375	2.36	66924	681	140	Yes	P1283, P1284
S5	LS53	16.375	27.250	10.875	2.00	66680	631	208	Yes	P1283, P1284
S5	LS75	18.250	31.875	13.625	2.00	66713	420	153	Yes	P1167
S5	S5	12.250	20.125	7.875	2.00	66603	737	131	Yes	Two P1167
S5	S5	12.875	21.375	8.500	2.00	66605	433	110	Yes	Two P1283, P1284
S5	S5	13.500	23.625	10.125	2.25	66921	686	142	Yes	Two P1283, P1284
S5	S5	14.000	24.125	10.125	2.25	66923	386	121	Yes	Two P1283, P1284
S6	LS54	14.000	22.250	8.250		66407			Yes	P1071, P1231
S6	LS54	14.875	23.500†	8.625	2.00	66658	624	153	Yes	P1071, P1231
S6	LS71	14.125	21.750	7.625		66408			Yes	None
S6	S6	15.125	25.875	10.750	2.00	66626	369	101	Yes	Two P1071, P1231
S6	S6	16.875	29.500	12.625	2.00	66628	369	101	Yes	Two P1071, P1231
SPEC	SPEC	13.875	22.375	8.500	SPEC	66504	604	335	Yes	None
GAS-MAGNUM® CAB SHOCK ABSORBERS										
L1	L1	7.875	11.250	3.375	1.86	66152	472	101	Yes	None
L1	L1	11.750	18.500	6.750	1.86	66143	337	269	No	Two P19
L1	S4	9.375	11.250†	1.875	1.86	66186	402	134	Yes	P1134, P1221
LS4	LS4	10.500	14.000†	3.500	1.86	66195	404	179	Yes	None
LS8	LS8	7.375	9.750†	2.375	1.86	66193	255	110	No	None
LS14	LS14	7.250	9.375†	2.125	1.86	66104	500	313	No	None
LS14	LS14	7.360	9.380	2.020		66126			Yes	None
LS14	LS14	8.000	11.375	3.375	1.86	66111	318	98	No	None
LS14	LS14	8.375	11.625†	3.250	1.75	66106	476	226	Yes	None
LS14	LS72	6.625	8.375†	1.750	1.75	66178	303	60	Yes	None
LS14	LS72	7.625	9.250†	1.625	1.75	66103	383	134	No	None
LS23	LS23	6.500	8.500	2.000	1.86	66120	213	103	Yes	None

† Bumper Stop Unit. Dimensions shown at Bumper Contact.

‡ Hydraulic Lockout Unit. Dimension shown at Lockout Contact.

MOUNTING & LENGTH CHARTS

Mounting Code		Lengths			Reserve Tube	Unit No.	Controls		Dust Shield	Part Package
Upper	Lower	Compress	Extend	Travel			Rebound	Compress		
GAS-MAGNUM® CAB SHOCK ABSORBERS — Continued										
LS24	LS24	8.500	11.500†	3.000	1.86	66159	421	94	Yes	None
LS29	S4	8.250	11.375†	3.125		66115			Yes	P1135
LS30	S4	7.750	10.960	3.210		66113			No	None
LS30	S4	8.220	11.380†	3.160		66114			Yes	P1135
LS37	LS37	7.780	10.080†	2.300	1.86	66151	472	101	Yes	None
LS37	LS37	9.440	13.710†	4.270	1.86	66149	472	101	Yes	None
LS37	S4	7.730	10.400†	2.670	1.86	66116	277	106	Yes	P1135
LS37	S4	8.000	9.500†	1.500	1.86	66117	342	109	Yes	P1135
LS39	LS41	7.875	10.875†	3.000	1.86	66105	386	92	Yes	None
LS45	LS88	7.625	9.250†	1.625		66107			Yes	None
LS73	LS73	6.250	8.000†	1.750	1.86	66181	601	132	No	None
LS73	LS73	6.375	7.875†	1.500	2.00	66162			Yes	None
LS76	LS76	8.250	11.000†	2.750	1.86	66112	285	75	Yes	None
LS77	LS77	7.625	9.875	2.250	2.00	66160			Yes	None
LS77	LS77	8.000	9.375†	1.375		66109			Yes	None
LS77	LS77	8.125	10.875	2.750	2.00	66161			Yes	None
LS77	LS77	8.625	10.375†	1.750	1.86	66147	515	257	Yes	None
LS79	LS80	7.250	9.375†	2.125	1.86	66123	383	133	No	None
LS80	LS80	7.375	9.750†	2.375	1.86	66101			Yes	None
LS80	LS80	9.170	13.120	3.950	1.86	66145	472	106	Yes	None
LS84	L1	7.625	10.625†	3.000		66118			Yes	None
LS84	L1	7.625	10.625†	3.000		66122			Yes	None
LS84	L1	9.030	11.820†	2.79		66121			Yes	None
LS89	LS44	8.375	10.250	1.875		66108			Yes	None
LS96	LS97	7.910	10.330†	2.420		66124			Yes	None
LS98	LS80	10.000	12.875†	2.875		66125			Yes	None
S4	S4	7.250	10.500†	3.250	1.86	66154	368	75	Yes	Two P1135
S4	S4	9.000	11.750†	2.750	1.86	66110	225	64	No	Two P1135
S4	XP4	9.500	11.500†	2.000	1.86	66150	258	61	Yes	P1135
XP7	S4	5.750	7.375	1.625	1.86	66182	421	190	Yes	P1098
XP7	S4	7.125	9.750†	2.625	1.86	66157	550	307	Yes	P1134
XP7	XP7	6.125	7.875	1.750	1.75	66179	634	275	Yes	None
XP8	S4	8.750	10.875†	2.125	1.86	66189	330	64	Yes	P1098
MONRO-MAGNUM® 70 SERIES SHOCK ABSORBERS										
L4	L4	10.510	14.530‡	4.020		74436			No	None
L4	L4	11.750	15.750‡	4.000	2.75	74428	979	117	Yes	None
L4	L4	12.625	17.500‡	4.875	2.75	74405	1060	150	Yes	None
L4	L4	13.250	19.875	6.625	2.75	74075	1270	150	Yes	None
L4	L4	13.625	19.375‡	5.750	2.75	74423	1559	449	Yes	None
L4	L4	14.250	20.250‡	6.000	2.75	74406	1160	245	Yes	None
L4	L4	14.250	21.625	7.375	2.75	74006	755	100	Yes	None
L4	L4	14.625	22.625	8.000	2.75	74028	1036	162	Yes	None
L4	L4	15.125	23.625	8.500	2.75	74001	1125	150	Yes	None
L4	L4	15.250	23.625	8.375	2.75	74012	590	150	Yes	None
L4	L4	15.500	24.375	8.875	2.75	74025	1220	245	Yes	None
L4	L4	15.750	22.875‡	7.125	2.75	74408	1200	170	Yes	None
L4	L4	15.875	25.250	9.375	2.75	74029	1611	192	Yes	None
L4	L4	16.250	25.000‡	8.750	2.75	74424	750	240	Yes	None
L4	L4	16.350	26.180	9.830	2.75	74073	996	257	No	None
L4	L4	16.625	26.625	10.000	2.75	74003	1220	205	Yes	None
L4	L4	16.875	25.750‡	8.875	2.75	74400	1665	330	Yes	None
L4	L4	16.875	25.750‡	8.875	2.75	74413	770	135	Yes	None
L4	L4	18.250	29.625	11.375	2.75	74004	370	95	Yes	None
L4	L4	18.375	28.250‡	9.875	2.75	74412	1385	120	Yes	None
L4	L4	19.625	32.375	12.750	2.75	74069	965	340	Yes	None
L4	S6	13.500	20.000‡	6.500	2.75	74414	1152	303	Yes	None
L4	S6	15.000	23.125‡	8.125	2.75	74422	979	119	Yes	None
LS53	LS53	16.500	24.750‡	8.250	2.75	74420	370	140	Yes	None
LS54	LS54	15.125	22.375‡	7.250	2.75	74429	1385	519	Yes	None
LS59	LS60	13.500	19.250‡	5.750	2.75	74433	1152	303	Yes	None
LS59	LS60	15.000	22.125‡	7.125	2.75	74425	1152	303	Yes	None

† Bumper Stop Unit. Dimensions shown at Bumper Contact.
‡ Hydraulic Lockout Unit. Dimension shown at Lockout Contact.

MOUNTING & LENGTH CHARTS

Mounting Code		Lengths			Reserve Tube	Unit No.	Controls		Dust Shield	Part Package
Upper	Lower	Compress	Extend	Travel			Rebound	Compress		
MONRO-MAGNUM® 70 SERIES SHOCK ABSORBERS — Continued										
LS65	LS65	13.500	19.900†	19.490		74437			Yes	None
LS65	LS65	13.810	20.500	6.690		74438			Yes	None
LS65	LS65	15.080	23.240†	8.160		74435			Yes	None
LS81	S6	16.625	26.375†	9.750	2.75	74432	1350	183	Yes	P1071, P1231
LS81	S6	16.750	26.500†	9.750	2.75	74430	502	122	Yes	P1071, P1231
LS81	S6	18.750	30.500†	11.750	2.75	74431	750	175	Yes	P1071, P1231
S6	L4	15.125	23.250†	8.125	2.75	74417	714	313	Yes	None
S6	L4	15.875	24.125†	8.250	2.75	74402	1500	215	Yes	None
S6	L4	16.220	25.860†	9.640		74434			No	None
S6	L4	19.375	30.250†	10.875	2.75	74411	915	115	Yes	None
S6	LS54	13.125	20.875	7.750	2.75	74080	2490	1007	Yes	Two P1071
S6	LS54	13.375	20.000†	6.625	2.75	74426	1150	400	Yes	Two P1071
S6	S6	10.375	15.625	5.250	2.75	74070	894	131	Yes	None
S6	S6	12.250	18.125†	5.875	2.75	74409	1063	129	Yes	Four P1071
S6	S6	12.375	19.750	7.375	2.75	74079	754	129	Yes	Four P1071
S6	S6	13.375	20.250†	6.875	2.75	74421	951	453	Yes	Four P1071
S6	S6	13.375	21.375	8.000	2.75	74078	647	140	Yes	Four P1071
S6	S6	13.875	22.375	8.500	2.75	74077	589	95	Yes	Four P1071
S6	S6	14.625	23.875	9.250	2.75	74076	1059	245	Yes	Four P1071
S6	S6	14.875	23.500†	8.625	2.00	74416	866	499	Yes	Four P1071
S6	S6	16.375	27.625	11.250	2.75	74074	1220	279	Yes	Four P1071
S6	S6	17.000	27.750†	10.750	2.75	74415	694	253	Yes	None
S6	S6	18.750	29.625	10.875	2.75	74081	866	303	Yes	Two P1071, P1231
S6	S6	19.000	31.250†	12.250	2.75	74418	648	157	Yes	None
S6	SPEC	16.250	25.875†	9.625		74434			Yes	P1231, P1071
SPEC	SPEC	16.375	26.250	9.875	2.75	74073	996	257	Yes	None
GAS-MAGNUM® SEVERE SERVICE SHOCK ABSORBERS										
		14.375	21.375	7.000		553002				None
LS47	LS28	13.125	21.125	8.000	2.00	550019			Yes	None
LS48	LS43	12.625	20.250	7.625		550020			Yes	None
LS54	LS54	15.750	24.625†	8.875	2.38	551002	710	103	Yes	None
LS54	LS54	17.000	28.250†	11.250	2.38	551001	646	200	Yes	None
S4	XP4	12.625	20.375†	7.750	2.00	550016	329	119	Yes	P1136
XP7	LS47	13.625	21.875†	8.250	SPEC	550053	444	131	Yes	None
XP7	LS47	13.875	22.375†	8.500	2.00	550015	424	126	Yes	None
XP12	L1	12.750	20.250†	7.500	SPEC	550054	253	80	Yes	None
XP12	L1	17.750	20.125†	2.375	2.00	550017	253	80	Yes	None
GAS-MAGNUM® RV SHOCK ABSORBERS										
L1	L1	8.625	12.750	4.125	1.75	555002	259	95	Yes	P1221
L1	L1	9.625	14.750	5.125	1.75	555003	259	95	Yes	P1221
L1	L1	11.250	17.875	6.625	1.75	555004	259	95	Yes	P1221
L1	L1	12.000	19.500	7.500	1.75	555005	259	95	Yes	P1221
L1	L1	13.375	22.250	8.875	1.75	555006	259	95	Yes	P1221
L1	LS39	15.000	23.375†	8.375	2.00	555014	679	239	Yes	None
L1	LS39	15.000	23.375†	8.375	2.00	555015	630	161	Yes	None
L1	LS47	13.750†	19.250†	5.500	1.75	555046	308	91	Yes	P19
L2	L2	12.125	19.125	7.000	2.00	555012	413	119	Yes	None
L2	L2	16.000	27.000	11.000	2.00	555013	395	156	Yes	None
L2	LS39	14.625	24.125	9.500	2.00	555011	395	156	Yes	None
L4	L4	15.500	23.750†	8.250	2.38	557009	769	188	Yes	None
LS37	LS37	9.875	14.875†	5.000	2.00	555035	798	196	Yes	None
LS39	LS39	12.875	21.000	8.125	2.00	555038	450	160	Yes	None
LS39	LS39	15.000	24.625†	9.625	2.00	555036	430	140	Yes	None
LS39	LS54	15.250	23.875†	8.625	2.38	557011	559	287	Yes	None
LS47	LS47	12.750†	16.125†	3.375	2.00	555045	781	159	Yes	None
LS47	LS47	14.000	22.000	8.000	2.38	557004	663	116	Yes	None
LS53	LS37	10.625	15.750	5.125	2.38	557003	697	182	Yes	P1234
LS54	LS54	12.250	17.625†	5.375	2.38	557022	1059	282	Yes	None
LS54	LS54	13.500	20.000†	6.500	2.38	557013	1242	389	Yes	None
LS54	LS54	13.500	20.000†	6.500	2.38	557018	773	167	Yes	None

† Bumper Stop Unit. Dimensions shown at Bumper Contact.
 ‡ Hydraulic Lockout Unit. Dimension shown at Lockout Contact.

MOUNTING & LENGTH CHARTS

Mounting Code		Lengths			Reserve Tube	Unit No.	Controls		Dust Shield	Part Package
Upper	Lower	Compress	Extend	Travel			Rebound	Compress		
GAS-MAGNUM® RV SHOCK ABSORBERS — Continued										
LS54	LS54	13.625	20.500†	6.875	2.38	557012	502	186	Yes	None
LS54	LS54	13.625	20.500†	6.875	2.38	557026	665	241	Yes	None
LS54	LS54	14.000	21.250†	7.250	2.00	555026	680	239	Yes	None
LS54	LS54	14.000	21.250†	7.250	2.00	555027	631	163	Yes	None
LS54	LS54	15.000	23.250†	8.250	2.00	555028	680	239	Yes	None
LS54	LS54	15.000	23.250†	8.250	2.00	555029	631	163	Yes	None
LS54	LS54	15.250	23.500†	8.250	2.38	557027	646	200	Yes	None
LS54	LS54	15.375	23.750†	8.375	2.38	557010	682	258	Yes	None
LS54	LS54	15.375	23.875†	8.500	2.38	557023	655	291	Yes	None
LS54	LS54	15.750	24.625†	8.875	2.38	557014	650	258	Yes	None
LS54	LS54	16.000	25.625	9.625	2.38	557007	1099	250	No	None
LS54	LS54	16.375	27.000	10.625	2.38	557031	1155	309	Yes	None
LS54	LS54	16.500	26.250†	9.750	2.38	557020	828	307	Yes	None
LS54	LS54	16.875	27.000†	10.125	2.38	557028	851	284	Yes	None
LS54	LS54	16.875	27.625	10.750	2.38	557002	765	223	No	None
LS54	LS54	17.375	29.125	11.750	2.38	557001	823	316	Yes	P1232
LS54	LS54	17.875	29.000†	11.125	2.38	557015	696	145	Yes	None
LS54	S6	13.625	22.000	8.375	2.38	557032	741	238	Yes	P1071, P1231
LS59	LS60	14.750	22.250†	7.500	2.38	557030			Yes	None
LS59	LS60	16.750	27.000	10.250		557036			Yes	None
LS59	S6	13.625	21.500	7.875		557037			Yes	P10171, P1231
LS60	LS60	16.740	26.990	10.250		557038			Yes	None
LS76	LS76	8.250	11.500	3.250	2.00	555042	330	155	Yes	None
LS78	LS78	14.125	22.875	8.750	2.00	555041	404	106	Yes	None
S4	S4	7.875	11.875†	4.000	1.64	555001	319	100	Yes	Two P1134
S4	S4	8.625	13.500†	4.875	1.75	555025	412	146	Yes	Two P1134
S4	S4	12.500	20.875	8.375	2.00	555043	390	132	Yes	Two P1134
S5	L1	10.000	14.875†	4.875	2.00	555031	630	209	Yes	P1167
S5	LS15	13.500	22.125	8.625	SPEC	555010	571	170	Yes	P1167
S5	LS26	13.250	22.000	8.750	2.00	555032	520	200	Yes	P1167
S5	LS38	10.625	16.000†	5.375	2.00	555033	605	175	No	P1167
S5	LS38	13.500	22.500	9.000	SPEC	555020	445	168	Yes	P1167
S5	LS38	13.625	22.500†	8.875	2.00	555034	535	175	Yes	P1167
S5	LS39	14.500	22.875†	8.375	2.38	557034	1108	233	Yes	P1167
S5	LS39	14.500	22.875†	8.375	2.38	557035	913	205	Yes	P1167
S5	XP8	9.125	13.875	4.750	2.00	555039	836	206	No	P1167
S5	XP8	10.125	15.625	5.500	2.00	555037	836	206	No	P1167
S6	S6	11.250	16.500	5.250		557033			Yes	P1071, P1231
XP7	LS47	14.000	22.375†	8.375	SPEC	555009	649	125	Yes	None
GAS-MAGNUM® RV STEERING STABILIZERS										
L1	L1	17.125	29.375	12.250		555949			Yes	Two P576
S4	L1	13.750	23.375	9.625		555944			Yes	P837, P1098
REFLEX™ TRUCK SHOCK ABSORBERS										
L1	L1	12.625	20.000	7.375		911078			Yes	None
L1	L1	13.000	20.750	7.750		911073			Yes	None
L1	L1	14.000	22.625	8.625		911172			Yes	None
L1	L1	14.250	23.000	8.750		911029			Yes	None
L1	LS25	13.500	21.500†	8.000		911082			Yes	None
L1	LS26	13.500	21.750	8.250		911037			Yes	None
L1	LS26	13.750	21.875†	8.125		911175			Yes	None
L1	LS26	14.250	22.875†	8.625		911195			Yes	None
L1	LS26	14.250	23.000	8.750		911013			Yes	P827
L1	LS26	14.250	23.000	8.750		911052			Yes	None
L1	LS26	14.875	24.750	9.875		911038			Yes	None
L1	LS26	15.750	26.375	10.625		911039			Yes	None
L1	LS26	16.000	26.375	10.375		911014			Yes	P827
L1	LS26	16.250	27.000	10.750		911265			Yes	None
L1	LS26	16.625	28.125	11.500		911194			Yes	None
L1	LS26	17.625	29.625	12.000		911267			Yes	None
L1	LS26	18.250	31.000	12.750		911196			Yes	None

† Bumper Stop Unit. Dimensions shown at Bumper Contact.
‡ Hydraulic Lockout Unit. Dimension shown at Lockout Contact.

MOUNTING & LENGTH CHARTS

Mounting Code		Lengths			Reserve Tube	Unit No.	Controls		Dust Shield	Part Package
Upper	Lower	Compress	Extend	Travel			Rebound	Compress		
REFLEX™ TRUCK SHOCK ABSORBERS — Continued										
L1	LS26	18.500	31.375	12.875		911268			Yes	None
L1	LS82	13.375	20.750†	7.375		911226			Yes	None
L1/CP5	LS36	10.000	14.625	4.625		911049			Yes	P19
L1/CP5	LS47	14.000	22.875	8.875		911041			Yes	P19
L3	L3	13.750	21.500†	7.750		911032			Yes	P575
LS26	LS26	13.000	20.250†	7.250		911156			Yes	None
LS26	LS26	13.625	21.750	8.125		911144			Yes	None
LS26	LS26	14.000	22.500†	8.500		911055			Yes	None
LS26	LS26	14.375	23.125	8.750		911145			Yes	None
LS27	LS26	10.750	15.750†	5.000		911110			Yes	None
LS27	LS27	11.500	16.875	5.375		911218			Yes	None
LS27	LS27	11.500	17.000	5.500		911246			Yes	None
LS28	LS26	11.875	18.125†	6.250		911061			Yes	None
LS28	LS28	11.250	17.000†	5.750		911123			Yes	None
LS28	LS28	12.000	18.125	6.125		911065			Yes	None
LS28	LS28	14.500	22.750†	8.250		911138			Yes	None
LS28	LS28	14.750	24.000	9.250		911277			Yes	None
LS28	LS28	15.250	24.625†	9.375		911140			Yes	None
LS28	LS29	14.625	22.375	7.750		911242			Yes	None
LS28	LS29	14.625	23.250	8.625		911241			Yes	None
LS29	LS23	11.000	16.000	5.000		911259			Yes	None
LS29	LS25	13.750	21.750†	8.000		911162			Yes	None
LS29	LS74	15.250	24.000	8.750		911260			Yes	None
LS29	S3	12.125	19.000	6.875		911248			Yes	None
LS29	S3	13.250	21.250	8.000		911247			Yes	None
LS30	LS38	15.125	24.250	9.125		911278			Yes	None
LS37	LS37	9.750	14.750	5.000		911090			Yes	None
LS37	LS37	11.750	18.375	6.625		911040			Yes	P816
LS39	LS39	11.500	16.625†	5.125		911099			Yes	None
LS39	LS39	13.000	20.875	7.875		911091			Yes	None
LS39	LS39	15.500	25.000	9.500		911261			Yes	None
LS39	LS39	16.500	27.250	10.750		911262			Yes	None
LS40	LS40	12.625	19.500	6.875		911281			Yes	None
LS40	LS40	13.250	21.000	7.750		911042			Yes	None
LS40	LS40	13.625	21.750	8.125		911258			Yes	None
LS44	LS44	10.250	14.750	4.500		911274			Yes	None
LS47	LS47	14.375	23.000†	8.625		911167			Yes	None
LS47	LS47	14.750	23.500†	8.750		911166			Yes	None
LS47	LS47	15.000	24.000†	9.000		911168			Yes	None
LS47	LS47	15.375	24.625	9.250		911103			Yes	None
LS47	LS47	15.500	23.875†	8.375		911150			Yes	None
LS47	LS47	15.750	26.125	10.375		911192			Yes	None
LS47	LS47	16.000	26.125†	10.125		911164			Yes	None
LS47	LS47	16.000	26.500	10.500		911187			Yes	None
LS47	LS47	16.500	27.500	11.000		911222			Yes	None
LS47	LS47	16.750	25.500†	8.750		911152			Yes	None
LS49	LS47	12.375	19.500	7.125		911275			Yes	None
LS49	LS47	12.750	20.250	7.500		911276			Yes	None
LS49	LS47	13.375	21.000	7.625		911273			Yes	None
LS52	LS28	14.000	21.875†	7.875		911203			Yes	None
LS52	LS30	14.625	23.250†	8.625		911158			Yes	None
LS74	LS52	15.250	24.250†	9.000		911204			Yes	None
LS74	LS74	14.625	23.125†	8.500		911064			Yes	None
LS77	LS39	11.250	15.875†	4.625		911190			Yes	None
LS77	LS39	11.250	16.500†	5.250		911043			Yes	None
LS78	L3	12.750	19.500†	6.750		911109			Yes	P120
LS91	LS91	12.000	17.750	5.750		911253			Yes	None
LS92	LS91	14.500	23.000	8.500		911252			Yes	None
LS92	LS91	15.125	24.250	9.125		911251			Yes	None
S4	L1	9.750	14.250†	4.500		911015			Yes	P1135
S4	L1	9.750	14.250†	4.500		911128			No	P1135, P1319

† Bumper Stop Unit. Dimensions shown at Bumper Contact.

‡ Hydraulic Lockout Unit. Dimension shown at Lockout Contact.

MOUNTING & LENGTH CHARTS

Mounting Code		Lengths			Reserve Tube	Unit No.	Controls		Dust Shield	Part Package
Upper	Lower	Compress	Extend	Travel			Rebound	Compress		
REFLEX™ TRUCK SHOCK ABSORBERS — Continued										
S4	L1	11.625	18.500	6.875		911036			Yes	P1135
S4	L1	13.000	21.750	8.750		911243			Yes	P1137
S4	L1	13.375	22.000	8.625		911024			Yes	P1134
S4	L3	12.500	20.000†	7.500		911157			Yes	P81, P1134
S4	L3	13.250	20.875†	7.625		911033			Yes	P81, P1134
S4	LS 50	12.500	19.625	7.125		911272			Yes	P1134
S4	LS7	15.875†	20.750†	4.875		911071			Yes	P1278
S4	LS21	10.000	14.500	4.500		911229			Yes	P1134
S4	LS23	8.000	11.875	3.875		911171			Yes	P1137
S4	LS23	8.125	12.125	4.000		911047			Yes	P1137
S4	LS23	8.250	11.750	3.500		911245			Yes	P1137
S4	LS23	8.750	13.375	4.625		911077			Yes	P1134
S4	LS23	8.750	13.375	4.625		911225			Yes	P1134
S4	LS23	9.500	14.250	4.750		911022			Yes	P1134
S4	LS23	10.375	15.375	5.000		911108			Yes	P1134
S4	LS23	12.750	20.375	7.625		911279			Yes	P1134
S4	LS23	13.125	21.500	8.375		911239			Yes	P1134
S4	LS23	13.625	22.500	8.875		911238		No		P1134
S4	LS23	13.750	22.375	8.625		911280		Yes		P1134
S4	LS26	9.750	14.750	5.000		911220		Yes		P1135
S4	LS26	9.875	14.500†	4.625		911011		Yes		P1135
S4	LS26	10.000	14.750†	4.750		911034		Yes		P1135
S4	LS26	12.500	20.750†	8.250		911080		Yes		P1135
S4	LS26	14.250	23.875	9.625		911132		Yes		P1135
S4	LS26	16.125	27.500	11.375		911134		Yes		P1136
S4	LS39	10.000	14.375†	4.375		911133		Yes		P1136
S4	LS43	13.625†	15.000†	1.375		911219		Yes		P1136
S4	LS43	14.000	20.875	6.875		911263		Yes		P1136
S4	LS43	14.375	24.000	9.625		911147		Yes		P1135
S4	LS43	15.000	23.375	8.375		911264		Yes		P1136
S4	LS43	16.125	27.500	11.375		911148		Yes		P1136
S4	LS82	9.250	13.750	4.500		911030		Yes		P1134
S4	LS91	14.125	22.625	8.500		911250		Yes		P1134
S4	SPEC	10.750	15.250†	4.500		911178		Yes		P1135
S4	SPEC	10.875	15.125	4.250		911256		Yes		P1136
S4	SPEC	10.875	15.125†	4.250		911151		Yes		P1135
S4	XP4	8.375	12.125	3.750		911129		No		P1134
S4	XP4	8.500	12.375	3.875		911058		No		P1134
S4	XP4	9.000	13.250	4.250		911019		No		P1134
S4	XP4	11.625	18.000†	6.375		911177		Yes		P941, P1135
S4	XP4	12.875	20.375†	7.500		911026		Yes		P1136
S4	XP4	13.000	20.750†	7.750		911081		Yes		P1136
S4	XP4	13.000	20.750†	7.750		911161		Yes		P941, P1136
S4	XP4	13.250	21.125†	7.875		911083		Yes		P1136
S4	XP4	13.625	18.000†	4.375		911122		Yes		P941, P1135
S4	XP5	8.625	12.625	4.000		911137		No		P1137
S4	XP5	9.250	12.875	3.625		911255		Yes		P1135
S4	XP5	9.250	13.875	4.625		911063		No		P1134
S4	XP5	9.500	13.500†	4.000		911153		Yes		P1135
S4	XP5	9.500	13.750†	4.250		911050		No		P1134
S4	XP5	9.875	14.125	4.250		911257		Yes		P1135
S4	XP5	10.375	14.375†	4.000		911149		Yes		P1135
S4	XP8	9.000	13.750	4.750		911096		No		P1135
S5	L1	10.250	15.000†	4.750		911173		Yes		P1167
S5	LS29	11.000	15.375	4.375		911282		Yes		None
S5	LS42	10.250	15.125†	4.875		911181		Yes		P1167
S5	LS47	9.625	13.750†	4.125		911102		Yes		P1167
S5	LS47	9.625	13.750†	4.125		911191		Yes		P1167
S5	LS47	10.750	15.875†	5.125		911188		Yes		P1167
S5	LS47	13.625	20.750	7.125		911266		Yes		P1167
S5	LS47	14.000	21.750†	7.750		911104		Yes		P1167

† Bumper Stop Unit. Dimensions shown at Bumper Contact.
‡ Hydraulic Lockout Unit. Dimension shown at Lockout Contact.

MOUNTING & LENGTH CHARTS

Mounting Code		Lengths			Reserve Tube	Unit No.	Controls		Dust Shield	Part Package
Upper	Lower	Compress	Extend	Travel			Rebound	Compress		
REFLEX™ TRUCK SHOCK ABSORBERS — Continued										
S5	LS47	14.250	22.250†	8.000		911193			Yes	P1167
S5	LS47	14.500	22.750†	8.250		911223			Yes	P1167
S5	LS54	14.000	22.250	8.250		911270			Yes	P1167, P1336
S5	LS54	14.375	23.125†	8.750		911184			Yes	P1167, P1336
S5	LS54	14.875	24.000†	9.125		911240			Yes	P1167, P1336
S5	XP5	10.250	14.875†	4.625		911131			Yes	P1167
S5	XP5	10.250	15.000†	4.750		911163			Yes	P1167
S5	XP12	9.875	14.250†	4.375		911186			Yes	P1167
S5	XP12	11.000	16.375†	5.375		911221			Yes	P1167
S6	LS43	11.500	17.250†	5.750		911183			Yes	P1071, P1231
XP7	LS26	15.000	25.000	10.000		911035			Yes	P941
XP7	LS26	15.250	25.125	9.875		911174			Yes	None
XP7	LS26	16.750	28.250	11.500		911176			Yes	None
XP7	LS47	13.375	21.000	7.625		911228			Yes	None
XP7	LS47	14.000	22.375†	8.375		911085			Yes	None
XP7	LS47	14.375	23.000	8.625		911230			Yes	None
XP7	LS47	14.500	24.000	9.500		911021			Yes	None
XP7	LS47	14.750	23.750†	9.000		911086			Yes	None
XP7	LS47	15.500	25.250†	9.750		911087			Yes	None
XP7	LS47	16.250	26.750†	10.500		911044			Yes	None
XP12	L1	12.750	20.000†	7.250		911027			Yes	None
XP12	LS37	12.625	19.625†	7.000		911135			Yes	None
REFLEX™ MONOTUBE SHOCK ABSORBERS										
L1	L1	13.000	20.750	7.750		911530			Yes	None
L1	LS25	13.875	21.500	7.625		911525			Yes	None
LS28	LS29	14.625	22.375	7.750		911510			Yes	None
LS28	LS29	14.625	23.250	8.625		911509			Yes	None
LS29	LS25	14.125	21.750	7.625		911523			Yes	None
LS39	LS39	11.375	16.625	5.250		911514			Yes	None
LS43	LS43	15.830	24.800	8.980		911533			Yes	None
LS43	LS43	17.750	27.250	9.500		911508			Yes	None
LS47	LS47	15.375	23.750	8.375		911506			Yes	None
LS47	LS47	15.375	24.125	8.750		911504			Yes	None
LS47	LS47	16.750	25.625	8.875		911502			Yes	None
LS77	LS39	11.375	16.625	5.250		911511			Yes	None
LS79	LS26	16.000	25.500	9.500		911519			Yes	None
S4	LS23	8.125	12.125	4.000		911529			Yes	P1137
S4	LS26	14.020	21.930	7.910		911536			Yes	None
S4	LS26	16.250	26.500	10.250		911521			Yes	P1137
S4	LS39	10.000	14.500	4.500		911520			Yes	P1136
S4	LS42	12.500	15.500	3.000		911507			Yes	P1136
S4	SPEC	10.875	15.375	4.500		911501			Yes	P1136
S4	SPEC	10.875	15.375	4.500		911505			Yes	P1136
S4	XP1	13.250	20.500	7.250		911522			Yes	P1138
S4	XP1	13.375	21.000	7.625		911524			Yes	P11
S4	XP4	9.000	13.375	4.375		911516			No	P1136
S4	XP5	9.625	14.000	4.375		911513			No	P1136
S4	XP5	10.250	14.625	4.375		911503			Yes	P1136
S4	XP12	13.000	18.500	5.500		911518			Yes	P1136
S6	SPEC	11.125	15.375	4.250		911527			Yes	P1136
SPEC	LS26	14.690	21.340	6.650		911537			Yes	None
SPEC	LS26	14.690	22.560	7.870		911538			Yes	None
SPEC	LS27	14.760	23.150	8.390		911539			Yes	None
SPEC	LS47	15.375	24.000	8.625		911528			Yes	None
XP2	LS39	16.000	25.250	9.250		911515			Yes	None
XP7	LS47	13.125	14.750	1.625		911517			Yes	None
XP7	LS47	14.750	23.750	9.000		911526			Yes	None
XP7	LS47	16.000	25.625	9.625		911512			Yes	None

† Bumper Stop Unit. Dimensions shown at Bumper Contact.

‡ Hydraulic Lockout Unit. Dimension shown at Lockout Contact.

MOUNTING & LENGTH CHARTS

Mounting Code		Lengths			Reserve Tube	Unit No.	Controls		Dust Shield	Part Package
Upper	Lower	Compress	Extend	Travel			Rebound	Compress		
STEERING STABILIZERS										
L1	L1	11.625	18.750	7.125	1.86	SC2917			No	Two P848
L1	L1	12.125	19.875	7.750	1.86	SC2915	130	130	No	Two P848
L1	L1	13.250	22.250	9.000	1.86	SC2916			No	Two P848
L1	L1	13.250	22.875	9.625	2.00	SC2911	190	190	No	Two P1198
L1	L1	14.125	24.000	9.875	1.86	SC2913	190	190	No	P837, P847
L1	L1	16.500	25.625	9.125	1.86	SC2946	130	130	No	Two P1034
L1	L1	17.000	26.875	9.875	1.86	SC2957			No	Two P1034
L1	LS2	17.875	26.500	8.625	1.86	SC2954	130	130	No	P1034
L1	LS4	12.000	19.500	7.500	2.00	SC2937	190	190	No	P837, P848
L1	LS4	12.250	20.125	7.875	1.86	SC2942	130	130	No	P837
L1	LS14	17.500	28.875	11.375	1.86	SC2951	130	130	No	P837
L1	LS24	13.750	23.000	9.250	1.86	SC2953	130	130	No	P837
L1	LS24	14.000	23.500	9.500	1.86	SC2964			No	P1368
L1	LS35	12.500	20.625	8.125	1.86	SC2963			No	P1368
L1	LS37	12.000	19.500	7.500	2.00	SC2928	190	190	No	P837
L1	S4	12.750	21.500	8.750	1.86	SC2914	130	130	No	P576, P1034, P1098
LS2	L1	12.500	19.875	7.375	1.64	SC2948			No	P1034
LS2	L1	15.375	23.625	8.250	1.86	SC2947	130	130	No	P1034
LS2	LS23	15.000	21.000	6.000	1.86	SC2936	190	190	No	None
LS4	LS4	13.875	23.250	9.375	1.86	SC2956			No	None
LS5	LS24	12.750	20.750	8.000	1.86	SC2962	117	133	No	P1326
LS14	L1	15.375	26.375	11.000	1.86	SC2922	105	138	No	P837
LS22	LS2	11.625	19.125	7.500	1.86	SC2939	190	190	No	None
LS23	LS22	11.500	17.625	6.125	1.86	SC2941	130	130	No	None
LS24	LS24	13.625	22.625	9.000	1.86	SC2960	261	251	No	None
LS26	LS26	13.000	21.375	8.375	1.86	SC2955	130	130	No	None
LS38	LS38	9.250	14.000	4.750	1.86	SC2958	590	208	Yes	None
LS39	LS38	14.500	24.375	9.875	1.86	SC2961	186	203	No	None
S4	L1	10.625	17.375	6.750	1.90	SC2940	186	190	No	P843, P1098
S4	L1	15.625	27.375	11.750		SC2965			No	P1134
S4	S4	12.625	21.875	9.250	1.86	SC2912	190	190	No	Two P1098
SPEC	SPEC	14.000	23.000†	9.000	2.00	SC2945	230	190	No	P837

† Bumper Stop Unit. Dimensions shown at Bumper Contact.

‡ Hydraulic Lockout Unit. Dimension shown at Lockout Contact.

MOUNTING PARTS

LOOPS BUSHINGS



103600046-1
One Piece
Fits a 1-3/4" O.D. Loop
Fits over a 3/4" Dia. Pin



103600082
One Piece
Fits 2-7/16" O.D. Loop
Fits over a 1" Dia. Pin



103611866
Two Piece
Fits a 1-3/4" O.D. Loop
Fits over a 3/4" Dia. Pin
Found in P119 & P120



103613480
Two Piece
Fits a 2-7/16" O.D. Loop
Fits over a 1" Dia. Pin



103645380
One Piece
Fits a 2-7/16" O.D. Loop
Fits over a 1" Dia. Pin

STEM CUSHIONS



106300008
For 1/2" Stem
Found in P1167



106345508
Fits over a Sleeve
On 1/2" Stem
Found in P1303



106345537
For a 5/8" Stem
Found in P1347

RETAINERS



117300006
Fits a 1/2" Stem
Found in P1167



117360858
Fits a 5/8" Stem
Found in P1347



133700034
Fits a 1/2" Stem
Found in P1303

SLEEVE



132710244
3/4" I.D. X 1-7/8" Length