



TRISEAL CORPORATION[®]

America's Best Value Provider of Heavy Duty Wheel End Products.



**Hub Caps, Gaskets, Hubodometers
Spindle Nuts, and Accessories**

Triseal manufactures and supplies the most complete line of hub caps in North America



Die Cast Aluminum Side Fill Plug



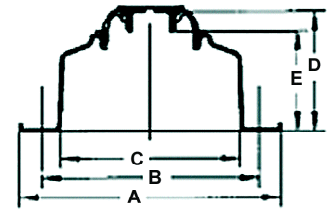
"P" Axle Threaded Plastic-Aluminum



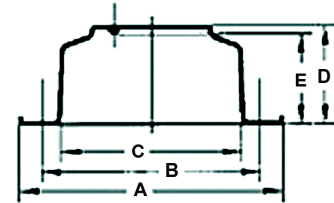
Stamped Steel for Oil Painted & Chrome



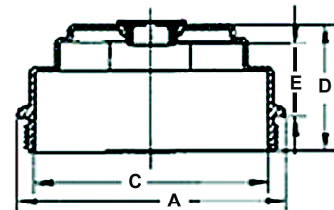
Stamped Steel for Grease Painted & Chrome



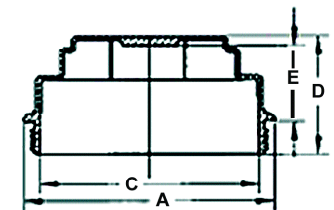
Type A



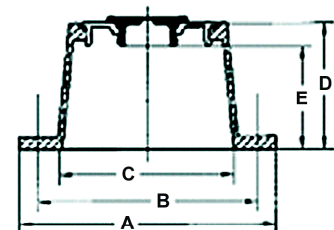
Type B



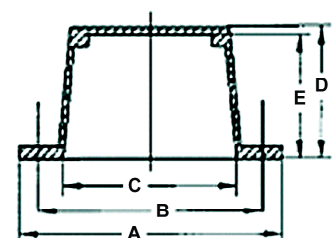
Type C



Type D



Type E



Type F

OEM approved and specified designs insure exact fit and a long, trouble-free service life. Depending on the application, we provide as many as six design types. Consult this page and the application charts that follow for the appropriate design version for your use.

Die Cast Aluminum Oil bath applications may include a convenient side fill plug. Engineered plastic windows allow for fast and easy oil level checks and are machine applied for a secure seal. Vented fill plugs maintain low internal pressure caused by normal heat build up. Hubodometer versions are also available for most applications.

Stamped Steel Hub Caps. Available in oil bath and grease applications these models feature great appearance, durability and cost effectiveness. They come standard with an ultra coat powder coat painted finish, and are available with duplex nickel plated chrome plated finish. A high tech machine applied window remains clear and is shatter proof. All of our stamped steel hub caps pass the 200 hour CASS (salt spray) test.

"P" Axle Hub Caps. Threaded hub caps come in die-cast aluminum or full plastic in oil and grease, or a hubodometer version. Choose from standard or chrome finish, with or without side fill plug or vented plug.

PSI Hub Caps. Replacement caps for PSI equipped wheel ends.

Die Cast Aluminum Hub Caps

For Oil Without Side Fill

Triseal P/N	Old Triseal P/N	Style	Flange OD (Dim A)	Bolt Circle (Dim B)	# Of Bolts	Bolt Size	Flange ID (Dim C)	Outside Height (Dim D)	Inside Height (Dim E)	Gasket	Stemco Cross Over	CR Cross Over
80002	64002A	E	5.94	5.25	3	3/8	4.09	3.25	2.79	61002	340-4002	*1627
80006	64006A	E	6.40	5.50	6	3/8	4.56	3.00	2.54	61006	340-4006	
80009	64009A	E	6.40	5.50	6	5/16	4.56	3.00	2.54	61067	340-4009	*1643
80012	64012A	E	6.40	5.75	6	5/16	4.56	3.00	2.54	61012	340-4012	
80013	64013A	E	6.40	5.50	5	5/16	4.56	3.00	2.54	61067	340-4013	*1642
80014	64014A	E	6.40	5.50	3	3/8	4.56	3.00	2.53	61014	340-4014	*1630
80018	64018A	E	5.94	5.00	4	3/8	4.09	3.25	2.79	61018	340-4018	
80024	64024A	E	5.20	4.50	6	5/16	3.46	2.69	2.23	61024	340-4024	*1612
80025	64025A	E	6.56	5.88	6	3/8	3.87	1.25	0.79	61025	340-4025	*1669
80028	64028A	E	5.94	5.00	4	1/4	4.09	3.25	2.79	61028	340-4028	
80029	64029A	E	5.87	5.00	4	3/8	4.12	1.87	1.41	61028	340-4186	
80034	64034A	E	7.25	6.625	6	1/4	5.25	2.00	1.54	61034	340-4034	*1670
80042	64042A	E	5.87	5.12	6	5/16	4.12	1.87	1.41	61041	340-4042	*1665
80046	64046A	E	6.56	5.50	6	5/16	4.56	1.68	1.22	61067	340-4046	*1643
80049	64049A	E	6.40	5.56	3	5/16	4.56	3.00	2.54	61042	340-4049	
80059	64059A	E	7.15	6.00	6	3/8	5.12	3.37	2.91	61056	340-4059	*1698
80065	64065A	E	4.25	3.62	4	5/16	2.62	2.10	1.50	61040	340-4065	*1608
80066	64066A	E	5.94	5.12	6	5/16	4.09	3.25	2.79	61041	340-4066	*1623
80092	64092A	E	6.56	5.88	6	5/16	4.56	1.68	1.12	61025	340-4092	
80096	64096A	E	5.94	5.12	6	5/16	4.09	3.25	2.79	61041		
80195	64195A	E	7.50	6.75	6	5/16	5.50	3.53	2.91	61085	340-4195	*1696
80249	64249A	E	6.40	5.50	6	5/16	4.42	2.20	1.74	61067	340-4249	*1613

*Plastic

For Oil With Side Fill

Triseal P/N	Old Triseal P/N	Style	Flange OD (Dim A)	Bolt Circle (Dim B)	# Of Bolts	Bolt Size	Flange ID (Dim C)	Outside Height (Dim D)	Inside Height (Dim E)	Gasket	Stemco Cross Over	CR Cross Over
81002	64002F	E	5.94	5.25	3	3/8	4.09	3.25	2.79	61002	343-4002	*1627
81006	64006F	E	6.40	5.50	6	3/8	4.56	3.00	2.54	61006	343-4006	
81009	64009F	E	6.40	5.50	6	5/16	4.56	3.00	2.54	61067	343-4009	*1643
81012	64012F	E	6.40	5.75	6	5/16	4.56	3.00	2.54	61012	343-4012	
81013	64013F	E	6.40	5.50	5	5/16	4.56	3.00	2.54	61067	343-4013	*1642
81014	64014F	E	6.40	5.50	3	3/8	4.56	3.00	2.53	61014	343-4014	*1630
81018	64018F	E	5.94	5.00	4	3/8	4.09	3.25	2.79	61018	343-4018	
81024	64024F	E	5.20	4.50	6	5/16	3.46	2.69	2.23	61024	343-4024	*1612
81025	64025F	E	6.56	5.88	6	3/8	3.87	1.25	0.79	61025	343-4025	*1669
81028	64028F	E	5.94	5.00	4	1/4	4.09	3.25	2.79	61028	343-4028	
81029	64029F	E	5.87	5.00	4	3/8	4.12	1.87	1.41	61028	343-4186	
81034	64034F	E	7.25	6.625	6	1/4	5.25	2.00	1.54	61034	343-4034	*1670
81042	64042F	E	5.87	5.12	6	5/16	4.12	1.87	1.41	61041	343-4042	*1665
81046	64046F	E	6.56	5.50	6	5/16	4.56	1.68	1.22	61067	343-4046	*1643
81049	64049F	E	6.40	5.56	3	5/16	4.56	3.00	2.54	61042	343-4049	
81059	64059F	E	7.15	6.00	6	3/8	5.12	3.37	2.91	61056	343-4059	*1698
81066	64066F	E	5.94	5.12	6	5/16	4.09	3.25	2.79	61041	343-4066	*1623
81092	64092F	E	6.56	5.88	6	5/16	4.56	1.68	1.12	61025	343-4092	
81096	64096F	E	5.94	5.12	6	5/16	4.09	3.25	2.79	61041		
81195	64195F	E	7.50	6.75	6	5/16	5.50	3.53	2.91	61085	343-4195	*1696
81249	64249F	E	6.40	5.50	6	5/16	4.42	2.20	1.74	61067	343-4249	*1613
81909	64009FE	E	6.25	5.50	6	5/16	4.40	2.70	2.02	61009	343-4009	*1643
81919			6.25	5.50	6	5/16	4.40	2.70	2.02	61009	343-4009	*1643



80249C



80009



81249 OE Steer

NEW



81909 Economy Model

NEW



81919 With Reinforced Clear Window

Die Cast Aluminum Hub Caps With Grease Window



82009



83013



83013 with
Low Pro Hubodometer



85075



80075

Triseal P/N	Old Triseal P/N	Style	Flange OD (Dim A)	Bolt Circle (Dim B)	# Of Bolts	Bolt Size	Flange ID (Dim C)	Outside Height (Dim D)	Inside Height (Dim E)	Gasket	Stemco Cross Over	CR Cross Over
82006	64006AG	F	6.40	5.50	6	3/8	4.56	3.00	2.54	61006		
82009	64009AG	F	6.40	5.50	6	5/16	4.56	3.00	2.54	61067	349-4009	*1343
82012	64012AG	F	6.40	5.75	6	5/16	4.56	3.00	2.54	61012		
82013	64013AG	F	6.40	5.50	5	5/16	4.56	3.00	2.54	61067	349-4013	*1342
82014	64014AG	F	6.40	5.50	3	3/8	4.56	3.00	2.53	61014		*1331
82025	64025AG	F	6.56	5.88	6	3/8	3.87	1.25	0.79	61025		
82029	64029AG	F	5.87	5.00	4	3/8	4.12	1.87	1.41	61028		
82034	64034AG	F	7.25	6.625	6	1/4	5.25	2.00	1.54	61034		
82042	64042AG	F	5.87	5.12	6	5/16	4.12	1.87	1.41	61041		
82046	64046AG	F	6.56	5.50	6	5/16	4.56	1.68	1.22	61067	349-4046	*1343
82049	64049AG	F	6.40	5.56	3	5/16	4.56	3.00	2.54	61042		
82059	64059AG	F	7.15	6.00	6	3/8	5.12	3.37	2.91	61056		
82065	64065	F	4.25	3.62	4	5/16	2.62	2.10	1.50	61040		*1305
82092	64092AG	F	6.56	5.88	6	5/16	4.56	1.68	1.12	61025		

*Plastic

With Hubodometer Window

Triseal P/N	Old Triseal P/N	Style	Flange OD (Dim A)	Bolt Circle (Dim B)	# Of Bolts	Bolt Size	Flange ID (Dim C)	Outside Height (Dim D)	Inside Height (Dim E)	Gasket	Stemco Cross Over	CR Cross Over
83006	64006H	**	6.40	5.50	6	3/8	4.56	3.77	2.54	61006		
83009	64009H	**	6.40	5.50	6	5/16	4.56	3.77	2.54	61067	347-4009	*1600
83012	64012H	**	6.40	5.75	6	5/16	4.56	3.77	2.54	61012		
83013	64013H	**	6.40	5.50	5	5/16	4.56	3.77	2.54	61067	347-4013	*1601
83014	64014H	**	6.40	5.50	3	3/8	4.56	3.77	2.53	61014		
83025	64025H	**	6.56	5.88	6	3/8	3.87	2.02	0.79	61025		
83029	64029H	**	5.87	5.00	4	3/8	4.12	2.64	1.41	61028		
83034	64034H	**	7.25	6.625	6	1/4	5.25	2.77	1.54	61034		
83042	64042H	**	5.87	5.12	6	5/16	4.12	2.64	1.41	61041		
83046	64046H	**	6.56	5.50	6	5/16	4.56	2.45	1.22	61067		
83049	64049H	**	6.40	5.56	3	5/16	4.56	3.77	2.54	61042		
83059	64059H	**	7.15	6.00	6	3/8	5.12	4.14	2.91	61056		
83092	64092H	**	6.56	5.88	6	5/16	4.56	2.45	1.12	61025		

** Hubodometer Style Hubcaps Not Shown in Diagrams

*Plastic

Threaded Hub Cap For "P" Axle

Triseal P/N	Old Triseal P/N	Style	Description	Flange ID (Dim C)	Outside Height (Dim D)	Inside Height (Dim E)	Gasket	Stemco Cross Over	CR Cross Over
80075	64075A	C	Alum W/O Side fill	6.25 X 8 TPI MALE	5.87	3.25	2.79	61077	340-4075
81075	64075F	C	Alum With Side fill	6.25 X 8 TPI MALE	5.87	3.25	2.79	61077	343-4075
82075	64075G	D	Alum for Grease	6.25 X 8 TPI MALE	5.87	3.25	2.79	61077	349-4075
83075	64075AH	C	Alum for Hubodometer	6.25 X 8 TPI MALE	5.87	4.02	2.79	61077	347-4075
84075	64075PH	C	Plastic for Hubodometer	6.25 X 8 TPI MALE	5.87	2.93	2.78	61077	640-0003 1283
85075	64075P	C	Plastic	6.25 X 8 TPI MALE	5.87	2.93	2.78	61077	340-4975 1282

Stamped Steel Hub Caps

For Oil Applications

Triseal P/N	Old Triseal P/N	Style	Flange OD (Dim A)	Bolt Circle (Dim B)	# Of Bolts	Bolt Size	Flange ID (Dim C)	Outside Height (Dim D)	Inside Height (Dim E)	Gasket	Stemco Cross Over	CR Cross Over
86009	64009S	A	6.63	5.5	6	5/16	4.54	3.08	2.09	**62209		1743
86013	64013S	A	6.63	5.5	5	5/16	4.54	3.08	2.09	**62213		1742

**Cork/Rubber Composition

For Grease Applications

Triseal P/N	Old Triseal P/N	Style	Flange OD (Dim A)	Bolt Circle (Dim B)	# Of Bolts	Bolt Size	Flange ID (Dim C)	Outside Height (Dim D)	Inside Height (Dim E)	Gasket	Stemco Cross Over	CR Cross Over
87009	64009G	B	6.63	5.5	6	5/16	4.54	2.5	2.06	**62209	340-5096	1753
***88009		B	6.63	5.5	6	5/16	4.54	2.5	2.06	**62209	340-5097	*1640
87013	64013G	B	6.63	5.5	5	5/16	4.54	2.5	2.06	**62213		
87085	64085G	B	7.5	6.75	6	5/16	5.38	2.5	1.88	**62285		*1697

*** Without Vent - Unpainted Derby Style

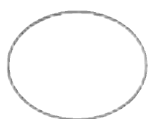
**Cork/Rubber Composition *Plastic

Die Cast Aluminum PSI Hub Caps

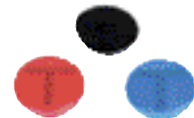
Triseal P/N	Flange OD (Dim A)	Bolt Circle (Dim B)	# Of Bolts	Bolt Size	Flange ID (Dim C)	Outside Height (Dim D)	Inside Height (Dim E)	Dual Dynamics	Stemco Cross Over
81309	6.25	5.53	6	0.37	4.43	2.83	2.02	207-P6	343-4350
81375	6.46	N/A	Threaded	N/A	5.64	2.39	1.34	267-P6	343-4351
81385	7.5	6.75	6	0.37	5.45	2.71	1.94	260-P6	343-4352

Replacement Parts

"O" Rings



61077 "O" Ring for Threaded Cap



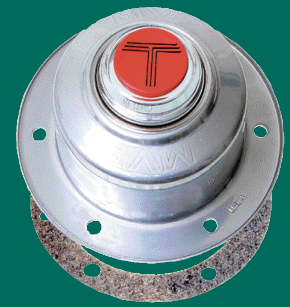
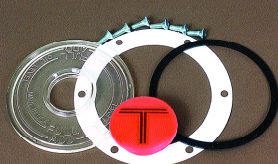
- 64997 Universal vented black rubber fill plug
- 64999 Universal vented red rubber fill plug
- 64997B Bulk pack of 100 64997
- 64999B Bulk pack of 100 64999



64996 - 3/8" - 18 NPTF Side fill Plug

Lens Kits

Triseal P/N	Stemco Crossover	Description
74009	359-5995	3.5" Diameter Window
74009H	359-5985	3.5" Dia window for Hubodometer
74092	359-5912	4 3/8" Diameter Window
74024	359-5999	2 3/4" Diameter Window



86009



87009

NEW



81309

NEW



81375

NEW



81385 Pro Pack

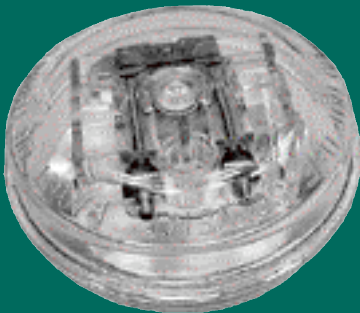
NEW

Low Profile



46000 Series

Hermetically Sealed Polycarbonate POD



Eliminates Contaminant Intrusion

Robust Style



662-666 Series

Hubodometers

Hubodometers are assets that ease the scheduling of regular maintenance and safety checks. Triseal is proud to announce the new 46000 Series that offers a lower profile than our 662 – 666 Series full face models. Both models are truly the most robust and durable hubodometers on the market today.

Features

- Models available in miles or kilometers.
- UV protected polycarbonate material is hermetically sealed to provide a moisture proof, tamperproof, air tight seal.
- Hubodometers are available in a full range of ratios that meet the latest tire manufacturer's specifications.
- Zinc protected housing exceeds ASTM B117 Salt Spray requirements.
- Counts in forward or reverse on the left or right side of the vehicle.
- The fully mechanical unit doesn't require wiring, power, or complicated programming.
- Each unit is individually serial numbered so it can be tracked by the manufacturer.
- Pre-set units are available upon request.
- Supported by a full line of mounting accessories - both brackets and hubcaps.
- This is the most durable unit on the market today - and backed by the longest warranty.

500,000 MILE WARRANTY (800,000K)*

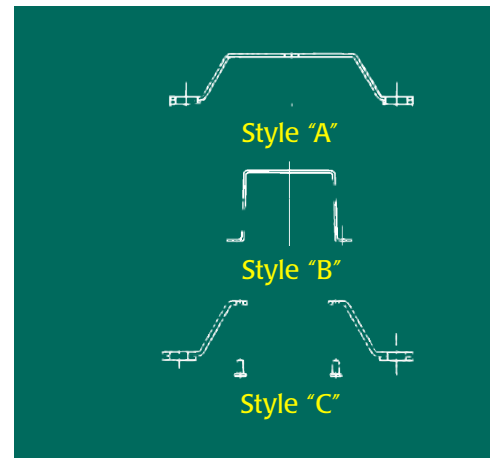
Specifications

- Both Series hubodometers are engineered & manufactured to maintain accuracy over the roughest of road conditions.
- Operating Range (-40°F to 180°F) (-40°C to 85°C)
- Product mass: 1.35 lbs. or 600 grams..
- The hubodometers are attached with a standard 1/2" 20 mounting stud.

Tire Size	Treadsize	Triseal Robust Series (Miles)	Triseal Low Profile Series (Miles)	Veeder Root Part # miles	Stemco Part # Miles	Triseal Robust Series (Kilometers)	Triseal Low Profile Series (Kilometers)	Veeder Root (Kilometers)	Stemco Kilometers
10 x 22	Extra High	66468M	46468	777717-465	650-0581	66294K	46294	777727-294	650-0526
11 x 24.5	Extra High	66468M	46468	777717-465	650-0581	66294K	46294	777727-294	650-0526
11 x 22	Standard	66468M	46468	777717-465	650-0583	66294K	46294	777727-294	650-0528
12 x 24.5	Standard	66468M	46468	777717-465	650-0583	66294K	46294	777727-294	650-0528
10 x 22	Standard	66475M	46475	777717-475	650-0583	66294K	46294	777727-294	650-0528
11 x 24.5	Standard	66475M	46475	777717-475	650-0583	66294K	46294	777727-294	650-0528
11 x 20	High Tread	66475M	46475	777717-475	650-0584	66294K	46294	777727-294	650-0528
12 x 22.5	High Tread	66475M	46475	777717-475	650-0584	66294K	46294	777727-294	650-0528
10 x 20	High Tread	66483M	46483	777717-490	650-0587	66308K	46308	777727-306	650-0532
11 x 22.5	High Tread	66483M	46483	777717-490	650-0587	66308K	46308	777727-306	650-0532
11 x 20	Standard	66494M	46494	777717-494	650-0593	66308K	46308	777727-310	650-0532
12 x 22.5	Standard	66494M	46494	777717-494	650-0593	66308K	46308	777727-310	650-0532
285/75R x 24.5	High Tread	66494M	46494	777717-494	650-0598	66308K	46308	777727-310	650-0537
10 x 20R	Standard	66500M	46500	777717-500	650-0598	66308K	46308	777727-310	650-0537
11 x 22.5	Standard	66500M	46500	777717-500	650-0598	66308K	46308	777727-310	650-0537
285/75R-24.5 Std	Standard	66500M	46500	777717-500	650-0601	66308K	46308	777727-310	650-0539
9 x 20	High Tread	66500M	46500	777717-500	650-0601	66308K	46308	777727-310	650-0539
10 x 22.5	High Tread	66500M	46500	777717-500	650-0601	66308K	46308	777727-310	650-0539
275/80R-24.5	High Tread	66510M	46510	777717-510	650-0593	66315K	46315	777727-316	650-0532
295/75R-22.5	High Tread	66513M	46513	777717-514	650-0605	66322K	46322	777727-326	650-0541
275/80R-24.5	Standard	66513M	46513	777717-514	650-0605	66322K	46322	777727-326	650-0541
295/75R-22.5	Standard	66525M	46525	777717-520	650-0610	66322K	46322	777727-326	650-0545
275/80R-22.5	Low Tread	66525M	46525	777717-520	650-0608	66322K	46322	777727-326	650-0545
9 x 20	Standard	66525M	46525	777717-525	650-0608	66322K	46322	777727-326	650-0545
10 x 22.5	Standard	66525M	46525	777717-525	650-0608	66322K	46322	777727-326	650-0545
825-20	Standard	66546M	46546	777717-550	650-0616	66336K	46336	777727-343	650-0548
9-22.5	Standard	66546M	46546	777717-550	650-0616	66336K	46336	777727-343	650-0548
255/70R-22.5	Standard	66567M	46567	777717-572	650-0626	66350K	46350	777727-350	650-0549
8.25 x 15	Standard	66646M	46646	777717-637	650-0633	66392K	46392	777727-392	650-0561

Hubodometer Brackets

Triseal P/N	Style	Bolt Circle	Height	Stud Size	Abbott	OEM	Midway	Stemco	Veeder Root
660003	A	6 3/8" - 6 1/2"	1 11/16"	9/16"		AF-206		610-0003	
660008	A	7.5"	1 9/16"	5/8"		AF-210		610-0008	
660011	A	7"	1 11/16"	5/8"		AF-208		610-0006	325614-107
660012	A	7"	1 11/16"	3/4"		AF-209	610-0007	610-0007	325614-108
660013	B	6.5"	4.5"	1/2"	01890-0900			610-0058	
660014	B	5.5"	4"	7/16"				610-0013	
660901	B	5.5"	3.5"	5/16"	01890-0901	AT-902		610-0065	325614-012
660904	C	UNIVERSAL DRIVE AXLE 5.5" --7.5"	1" 1.75"	1/2" 1/2"	1890-0904	ATFMK		610-0011	325614-101



Drive Axle Gaskets and Interchange

Triseal P/N	# Holes	Hole Dia.	Bolt Circle	ID Dia.	OD Dia.	CR	Stemco	Euclid	Leland	Dayton	BWP	Mechanex	Nat'l	Rockwell
61036	8	13/16	7.00	5.50	8.62	450874	330-3036							
61105	12	17/32	6.50	5.62	7.44	450875	330-3105	E-2340	L-1508	13-7114	M-2535	401575	733105	2208Z-416
61106	8	21/32	7.00	5.94	8.25	450876	330-3106	E-2341	L-1510	13-7124	M-2537	401576	733106	2208W-412
61107	8	25/32	7.00	5.62	8.50	450877	330-3107	E-2431	L-1511	13-7120	M-2534	401577	733107	2208X-440
61108	8	15/32	4.75	4.00	6.56	450878	330-3108	E-2432	L-1502	13-7123	M-2530	401578	733108	
61109	8	17/32	5.25	4.50	6.12	450879	330-3109	E-2433	L-1504	13-7108	M-2532	401579	733109	
61111	8	21/32	7.00	5.62	8.38	450981	330-3111	E-2435	L-1509	13-7116	M2536	401581	733111	2208W-413
61112	8	21/32	5.50	4.00	6.44	450982	330-3112	E-2436	L-1507	13-7106		401582	733112	
61113	12	17/32	5.25	4.50	6.12	450983	330-3113	E-2437	L-1505	13-7110	M-2531	401583	733113	
61114	12	17/32	5.25	4.25	6.12	450984	330-3114	E-2438				401584	733114	2208Z-422
61118	6	5/16	6.75	5.50	8.00									

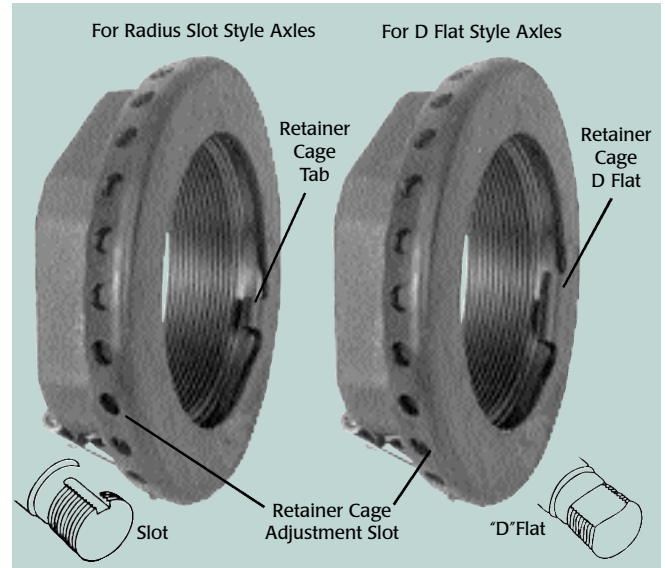
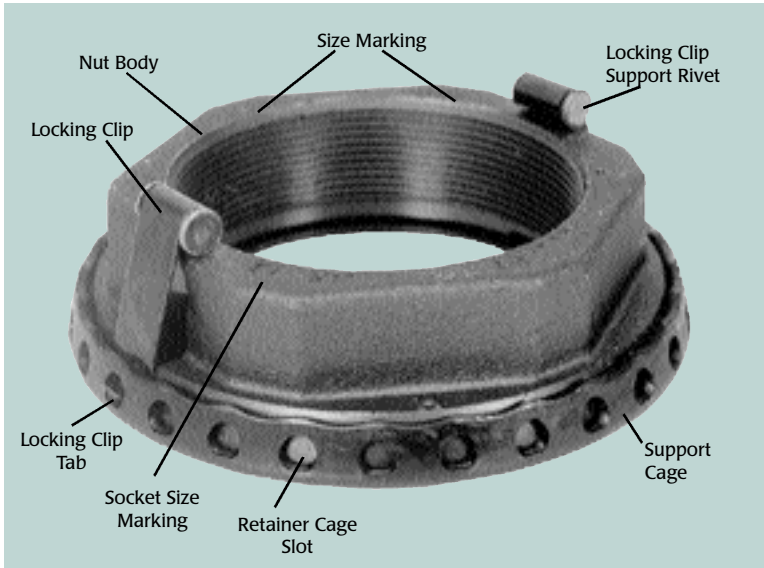
Hub Cap Gasket Interchange

Triseal	Flange O.D.	Bolt Circle	# Of Bolts	Hole Size	Flange I.D.	CR	Stemco	GMC	Nat'l	Rockwell
61040	4.25	3 5/8	4	5/16	3.00	450765	330-3040		730008	2208C835
61039	4.50	3 7/8	6	9/32	3.00		330-3119			
61094	4.50	4 1/8	6	7/32	3.31		330-3094			
61037	5.00	4 3/8	6	9/32	3.28					
61024	5.25	4 1/2	6	11/32	3.50	450755	330-3024	8873427	730004	2208E889
61018	5.75	5	4	15/32	3.75					
61028	5.75	5	4	9/32	3.75		330-3120			
61028	5.75	5	4	9/32	3.75	450749	330-3028		730001	
61041	5.75	5 1/8	6	11/32	4.43	450748	330-3041	2455093	730016	3208J1076
61002	6.00	5 1/4	3	25/64	4.38	450777	330-3019		730009	
61006	6.25	5 1/2	6	7/16	4.50					
61009	6.25	5 1/2	6	11/32	4.81	450751	330-3009	2455044	733067	2208C575
61067	6.25	5 1/2	12	11/32	4.75	450751	330-3009	2455044	733067	2208C575
61067	6.25	5 1/2	12	11/32	4.75	450775	330-3013			
61067	6.25	5 1/2	12	11/32	4.75	450788	330-3122	15556131		
61067	6.25	5 1/2	12	11/32	4.75	450293				
61067	6.25	5 1/2	12	11/32	4.75	453644				
61067	6.25	5 1/2	12	11/32	4.75		330-3009	8061231		
61042	6.38	5 5/9	3	11/32	4.50	450743	330-3042			
61012	6.75	5 3/4	6	7/16	4.81					
61025	6.50	5 7/8	6	11/32	5.00	450741	330-3025		730003	
61025	6.50	5 7/8	6	11/32	5.00	453645				
61080	6.75	5 7/8	6	13/32	4.25					
61056	6.75	6	6	11/32	4.81	450744	330-3056		730030	
61046	7.12	6 1/2	3	13/32	5.50					
61034	7.13	6 5/8	6	9/32	5.25	450768	330-3034		730027	
61085	7.50	6 3/4	6	11/32	5.31		330-3118			2208U1113
61036	8.63	7	8	13/16	5.50					
61090	8.62	7	8	21/32	5.50					
61077	5.90	O-RING			5.48					
62209	6.25	5 1/2	6	11/32	4.81	450751	330-3009	2455044	733067	2208C575
62213	6.25	5 1/2	5	11/32	4.81					
62205	7.50	6 3/4	6	11/32	5.31					



Triseal Heavy Duty Spindle Nuts

Unitized One Piece Spindle Nut



This first "true" single piece spindle nut reduces installation costs, maintenance costs and inventory carrying costs, while providing a faster and more accurate method of securing the wheel end components - at the Value that Triseal has become renowned for delivering.

Simple and more accurate adjustments within .001 inches will extend wheel seal and bearing service while extending tire tread life and virtually eliminate warranty claims. Adjustments are made in half the time that others require and deliver TMC recommended end play ranges - every time!

This nut will eliminate the three piece jamming style type adjusting nut systems and two piece models that require locking keepers and requires only one installation tool - a six point socket and torque wrench.

Available for trailer, drive, and steer axles and for standard or "D" flat slotted spindles.

Specifications

Triseal Part #	Description Spindle Nuts	Standard Case	POP Code	Stemco	Metform
				Two Piece Pro Torq	Protier Axilok
412-3480	TRAILER, 3.480" - 12 Propar Trailer Axle, Fruehauf, Meritor TP, Dana, Eaton P-22	12	A	447-4723	AX 12-3480
416-2625	TRAILER, 2.625" - 16, 17,000-22,500# Trailer Axle, Meritor, Standard Forge, Dana, Eaton	12	A	447-4743	AX 16-2625
412-1500	STEER, 1.5" - 12, 2,000# Front Axle, Meritor, Navistar (D10, X-115, T1100, TKF)	12	A	448-4836	AX 12-1500
418-1500	STEER, 1.5" - 18, 2,000# EATON, FORD, MERITOR	12	B	448-4837	AX 18-1500
412-3250	DRIVE, 3.25" - 12, 30,000# - 46,000# Tandem Axle, Eaton, Ford, Freightliner, Kenworth, Western Star, Navistar, Peterbilt, Volvo, GM	12	A	449-4973	AX 12-3250

Z80,002
Hub Cap, Gasket, Hubodometer,
Spindle Nuts, & Accessory Catalog
June 6, 2006



TRISEAL CORPORATION®

11920 Price Road • Hebron, Illinois 60034-8811
Phone: 815.648.2473 Fax: 815.648.2528
Toll Free Phone: 800.910.7325 Fax: 800.569.2528